



PLANT THERAPY
100% PURE ESSENTIAL OILS

GC/MS BATCH NUMBER: RG0100

ESSENTIAL OIL: RAVINTSARA
BOTANICAL NAME: CINNAMOMUM CAMPHORA
ORIGIN: MADAGASCAR

KEY CONSTITUENTS PRESENT IN THIS BATCH OF RAVINTSARA OIL	%
1,8-CINEOLE + LIMONENE	59.9
SABINENE	12.9
α -TERPINEOL	7.3
α -PINENE	4.7
β -PINENE	3.4
TERPINEN-4-OL	2.5
MYRCENE	1.6
γ -TERPINENE	1.5

Comments from Robert Tisserand: Excellent Eucalyptus-Tea Tree odor profile. Constituents are in expected amounts.

Date : May 8, 2017

SAMPLE IDENTIFICATION

Internal code : 17E04-PTH6-1-DM

Customer identification : Ravintsara Camphora - Madagascar - RG010072R

Type : Essential oil

Source : *Cinnamomum camphora*

Customer : Plant Therapy

ANALYSIS

Method : PC-PA-001-15E06, "Analysis of the composition of a liquid essential oil by GC-FID" (in French).

Analyst : Sylvain Mercier, M. Sc., chimiste

Analysis date : 2017-05-08

Checked and approved by :

Alexis St-Gelais, M. Sc., chimiste 2013-174

Note: This report may not be published, including online, without the written consent from Laboratoire PhytoChemia.

This report is digitally signed, it is only considered valid if the digital signature is intact.

IDENTIFIED COMPOUNDS

Identification	Column: BP5			Column: WAX			Molecular Class
	R.T.	R.I.	%	%	R.I.	R.T.	
Ethanol	0.35	632	0.01	0.01	796	0.68	Aliphatic alcohol
<i>cis</i> -Hex-3-en-1-ol	2.48	865	0.01	0.01	1324	5.34	Aliphatic alcohol
Hexanol	2.72	884	0.01	0.01	1299	4.98	Aliphatic alcohol
Tricyclene	3.22	917	0.01	0.01	920	1.01	Monoterpene
α -Thujene	3.31	922	0.86	0.93	956	1.15	Monoterpene
α -Pinene	3.42	929	4.72	4.52	947	1.11	Monoterpene
Camphene	3.70*	945	0.21	0.18	1000	1.38	Monoterpene
α -Fenchene	3.70*	945	[0.21]	0.01	994	1.33	Monoterpene
Sabinene	4.16	973	12.90	12.60	1058	1.93	Monoterpene
β -Pinene	4.21	976	3.41	3.29	1040	1.74	Monoterpene
Myrcene	4.47	991	1.56	1.46	1117	2.45	Monoterpene
6-Methyl-5-hepten-2-one	4.55	996	tr	0.01	1276	4.64	Aliphatic ketone
α -Phellandrene	4.74	1007	0.11	0.10	1110	2.37	Monoterpene
α -Terpinene	4.93	1017	0.95	0.97	1124	2.55	Monoterpene
1,8-Cineole	5.30*	1038	59.21	59.87	1156	2.96*	Monoterp. ether
Limonene	5.30*	1038	[59.21]	[59.87]	1156	2.96*	Monoterpene
para-Cymene	5.30*	1038	[59.21]	0.27	1208	3.65	Monoterpene
<i>cis</i> - β -Ocimene	5.34	1040	0.07	1.54	1189	3.39*	Monoterpene
<i>trans</i> - β -Ocimene	5.52	1049	0.34	0.33	1202	3.56	Monoterpene
γ -Terpinene	5.71	1060	1.51	[1.54]	1189	3.39*	Monoterpene
<i>cis</i> -Sabinene hydrate	6.00	1076	0.27	0.28	1404	6.62	Monoterp. alcohol
Terpinolene	6.17	1085	0.39	0.37	1223	3.86	Monoterpene
Linalool	6.61*	1106	0.18	0.15	1491	8.59*	Monoterp. alcohol
<i>trans</i> -Sabinene hydrate	6.61*	1106	[0.18]	0.14	1478	8.27	Monoterp. alcohol
<i>cis</i> -para-Menth-2-en-1-ol	7.13	1125	0.11	[0.15]	1491	8.59*	Monoterp. alcohol
Camphor	7.72	1147	0.01	0.01	1430	7.13	Monoterp. ketone
Borneol	8.49*	1175	0.72	0.19	1621	13.00	Monoterp. alcohol
δ -Terpineol	8.49*	1175	[0.72]	0.59	1596	12.08	Monoterp. alcohol
Terpinen-4-ol	8.71	1183	2.50	2.48	1529	9.62	Monoterp. alcohol
α -Terpineol	9.39	1205	7.26	7.43	1628	13.31*	Monoterp. alcohol
<i>trans</i> -Piperitol	9.80	1214	0.03	0.02	1671	15.57	Monoterp. alcohol
Nerol	10.40	1227	0.07	0.07	1731	18.76	Monoterp. alcohol
Neral	11.06	1242	0.01	0.02	1601	12.26	Monoterp. aldehyde
β -Elemene	18.76	1377	0.06	0.06	1523	9.41	Sesquiterpene
β -Caryophyllene	20.41	1402	0.57	0.57	1520	9.28	Sesquiterpene
α -Humulene	23.19	1435	0.61	0.61	1579	11.45	Sesquiterpene
γ -Muurolene	25.36*	1461	0.23	0.04	1614	12.74	Sesquiterpene
Germacrene D	25.36*	1461	[0.23]	0.13	1618	12.91	Sesquiterpene
β -Selinene	25.96	1468	0.17	[7.43]	1628	13.31*	Sesquiterpene
Bicyclogermacrene	26.61*	1476	0.37	0.26	1640	13.99	Sesquiterpene
α -Selinene	26.61*	1476	[0.37]	0.10	1633	13.61	Sesquiterpene

Valencene	27.50	1487	0.05	0.05	1662	15.08	Sesquiterpene
δ -Cadinene	29.07	1507	0.02	0.02	1668	15.40	Sesquiterpene
Germacrene B	31.77	1544	0.07	0.06	1720	18.12	Sesquiterpene
Spathulenol	33.57*	1569	0.05	0.02	2020	36.57	Sesquiterp. alcohol
Caryophyllene oxide	33.57*	1569	[0.05]	0.02	1847	26.50	Sesquiterp. ether
Total identified			99.64%	99.81%			

*: Two or more compounds are coeluting on this column

[xx]: Duplicate percentage due to coelutions, not taken account in the identified total

Note: no correction factor was applied

OTHER DATA

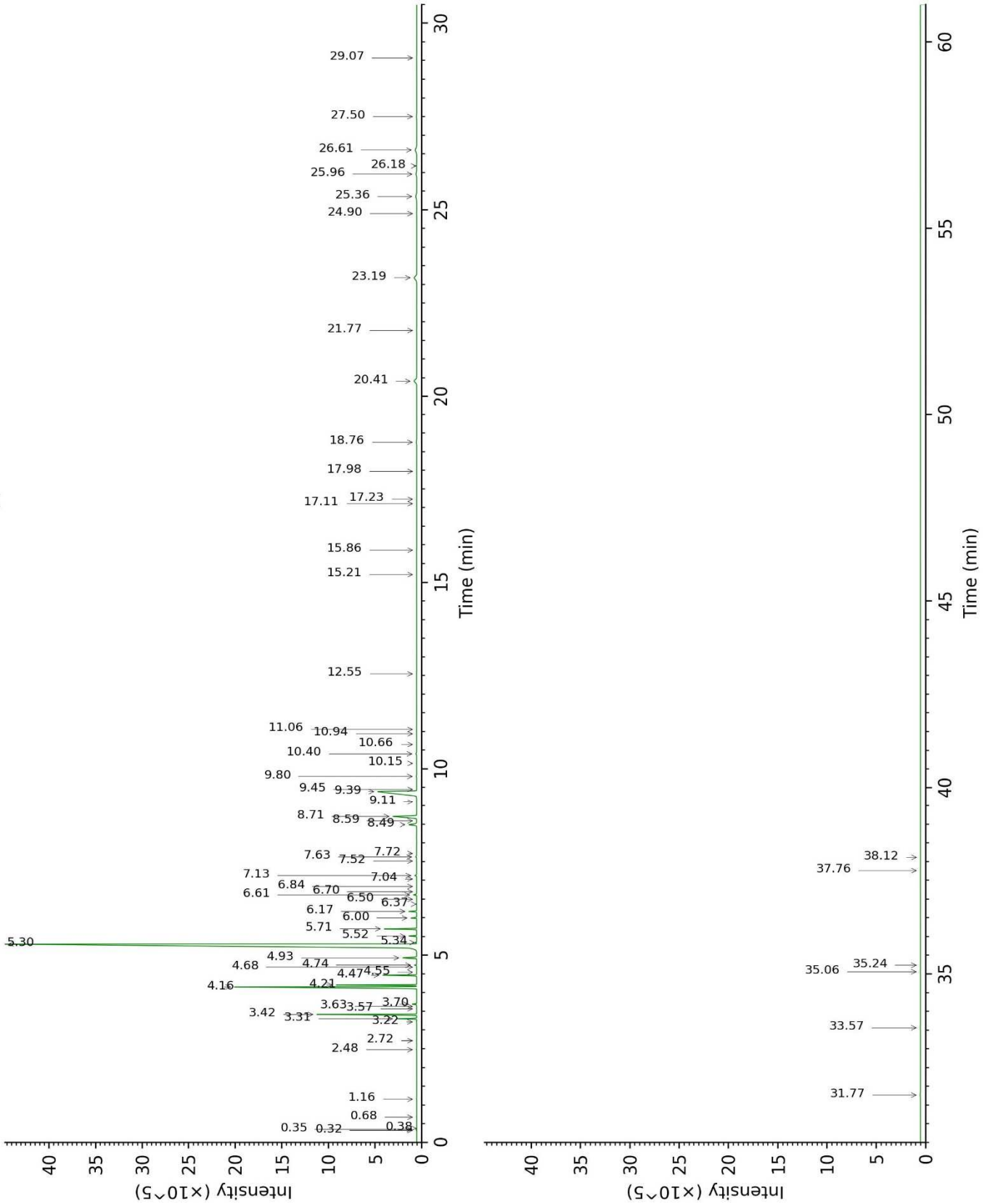
Physical aspect : Clear liquid

Refractive index : 1.4633 \pm 0.0003 (20 °C)

CONCLUSION

No adulterant, contaminant or diluent were detected using this method.

17E04-PTH6-1-DM_BP5



17E04-PTH6-1-DM_WAX

