

GC/MS BATCH NUMBER: S20101

ESSENTIAL OIL: SANDALWOOD
BOTANICAL NAME: SANTALUM SPICATUM
ORIGIN: AUSTRALIA

KEY CONSTITUENTS PRESENT IN THIS BATCH OF SANDALWOOD OIL	%
(Z)- α -SANTALOL	27.3
(Z)- β -SANTALOL	10.6
(Z)-NUCIFEROL	10.2
α -BISABOLOL	8.7
cis-FARNESOL	6.3
(E)-NUCIFEROL	4.4
NEROLIDOL	3.6
β -SANTALAL	2.5
(Z)-epi- β -SANTALOL	2.3
DENDROLASIN	2.2
α -SANTALENE	1.9
cis-LANCEOL	1.8
SANTALAL	1.8
β -SANTALENE	1.6
β -CURCUMENE	1.1
epi- β -SANTALENE	1.0
(Z)- α -BERGAMOTOL	0.3

Comments from Robert Tisserand:
 For Australian sandalwood, this is especially high in alpha-santalol, and it has a correspondingly rich, smooth odor. Constituents are in expected amounts.

Sample Information

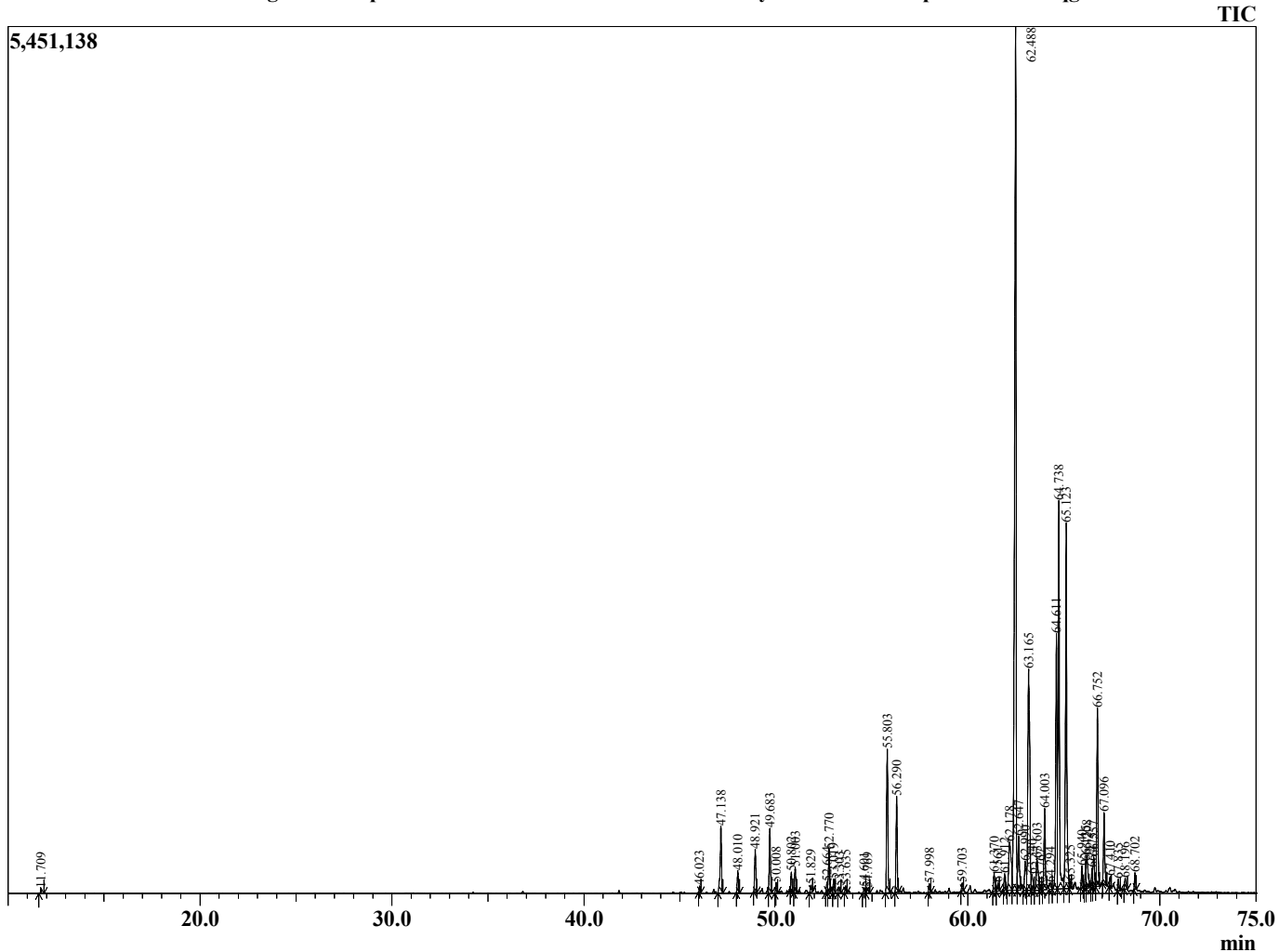
Analyzed by : Dr. Robert S. Pappas
 Analyzed : 3/6/2015 11:00:20 AM
 Sample Type : Essential Oil
 Sample Name : SanSpi9
 Sample ID : P150306B
 Injection Volume : 0.10
 Data File : C:\GCMSsolution\Data\The Perfumery\Data Files\SanSpi9 P150306B.qgd



Peak Report TIC

R.Time	Name	Area%
11.709	Santene	0.08
46.023	Sesquithujene <-7-epi->	0.13
47.138	Santalene <alpha->	1.85
48.010	Bergamotene <cis-alpha->	0.50
48.921	Santalene <beta-, epi->	1.00
49.683	Santalene <beta->	1.56
50.008	Acoradiene <alpha->	0.26
50.802	Curcumene <gamma->	0.43
51.003	Ar-Curcumene	0.58
51.829	Himachalene <beta->	0.19
52.664	Bisabolene <beta->	0.21
52.770	Curcumene <beta->	1.07
53.019	USandal	0.34
53.303	Teresantalic acid <alpha->	0.15
53.635	Sesquiphellandrene <beta->	0.16
54.601	Bisabolene isomer	0.13
54.769	Ekasantalic acid <alpha->	0.15
55.803	Nerolidol	3.58
56.290	Dendaralasin	2.17
57.998	Guaiol	0.21
59.703	Humulene epoxide II	0.18
61.370	Khusilal	0.48
61.561	Juniper camphor	0.25
61.912	Bulnesol	0.41
62.178	Santalal <beta->	2.46
62.488	Santalol <-Z-alpha->	27.34
62.647	Santalal isomer	1.76
62.990	USandal	0.99
63.165	Bisabolol <alpha->	8.65
63.340	USandal	0.55
63.603	USandal	1.30
63.767	USandal	0.16
64.003	Santalol <-Z-epi-, beta->	2.30
64.294	Bergamotol <(Z)-, alpha-trans->	0.28
64.611	Farnesol <cis,cis->	6.31
64.738	Santalol <-Z-beta->	10.60
65.123	Nuciferol <Z->	10.20
65.325	Santalol <-E-epi-beta->	0.23
65.940	Santalol <-E-beta->	0.51
66.135	USandal	0.55
66.208	USandal	1.04
66.475	USandal	0.47
66.557	USandal	0.88
66.752	Nuciferol <E>	4.36
67.096	Lanceol <cis->	1.83
67.410	Santalol acetate isomer	0.23
67.835	USandal	0.27
68.196	USandal	0.32
68.702	Lanceol <isomer>	0.37
		100.00

Chromatogram SanSpi9 C:\GCMSsolution\Data\The Perfumery\Data Files\SanSpi9 P150306B.qgd



Comments:

Typical Ranges of Main Components: