

GC/MS BATCH NUMBER: P10105

ESSENTIAL OIL: PALMAROSA
BOTANICAL NAME: CYMBOPOGON MARTINI
ORIGIN: INDIA

KEY CONSTITUENTS PRESENT IN THIS BATCH OF PALMAROSA OIL	%
Geraniol	79.13
Geranyl acetate	9.77
Linalool	2.70
β -Caryophyllene	1.86
(E)- β -Ocimene	1.56

Comments from Robert Tisserand: Delightful sweet-green, rosy odor quality. All thirteen key ISO constituents are within range.

Date : October 23, 2018

CERTIFICATE OF ANALYSIS – GC PROFILING

SAMPLE IDENTIFICATION

Internal code : 18J15-PTH14-1-CC

Customer identification : Palmarosa - India - P1010586R

Type : Essential oil

Source : *Cymbopogon martini*

Customer : Plant Therapy

ANALYSIS

Method: PC-PA-014-17J19 - Analysis of the composition of an essential oil, or other volatile liquid, by FAST GC-FID (in French); identifications validated by GC-MS.

Analyst : Benoit Roger, Ph. D.

Analysis date : October 18, 2018

Checked and approved by :

Sylvain Mercier, M. Sc., chimiste 2014-005

Note: This report may not be published, including online, without the written consent from Laboratoire PhytoChemia.

This report is digitally signed, it is only considered valid if the digital signature is intact.

PHYSICOCHEMICAL DATA

Physical aspect: Faintly yellow liquid

Refractive index: 1.4718 ± 0.0003 (20 °C)

CONCLUSION

No adulterant, contaminant or diluent has been detected using this method.

ANALYSIS SUMMARY

Identification	DB-5 (%)	DB-WAX (%)	Classe
2-Methyl-3-buten-2-ol	tr	0.01	Aliphatic alcohol
Isovaleral	0.01	0.01	Aliphatic aldehyde
Isoamyl alcohol	0.02	0.02*	Aliphatic alcohol
Isoamyl acetate	0.01	0.01	Aliphatic ester
2-Heptanone	tr	tr	Aliphatic ketone
6-Methyl-5-hepten-2-one	0.05	0.05	Aliphatic ketone
<i>trans</i> -Dehydroxylinalool oxide	0.19*	[0.02]*	Monoterpenic ether
Myrcene	[0.19]*	0.17	Monoterpene
<i>cis</i> -Dehydroxylinalool oxide	0.02	0.01	Monoterpenic ether
Limonene	0.10	0.11	Monoterpene
(<i>Z</i>)- β -Ocimene	0.43	0.40	Monoterpene
(<i>E</i>)- β -Ocimene	1.56	1.51	Monoterpene
<i>cis</i> -Linalool oxide (fur.)	0.01	0.02	Monoterpenic alcohol
Octanol	0.01	0.01	Aliphatic alcohol
Terpinolene	0.02*	0.01	Monoterpene
<i>trans</i> -Linalool oxide (fur.)	[0.02]*	0.01	Monoterpenic alcohol
Linalool	2.70	2.62	Monoterpenic alcohol
Citronellal	0.06	0.06	Monoterpenic aldehyde
α -Terpineol	tr	[0.05]	Monoterpenic alcohol
Decanal	0.01	0.01	Aliphatic aldehyde
Nerol	0.15	0.16	Monoterpenic alcohol
2,3-Epoxygeranial?	0.07*		Monoterpenic aldehyde
Citronellol	[0.07]*	0.07	Monoterpenic alcohol
Neral	0.22	0.19	Monoterpenic aldehyde
Isoamyl hexanoate	0.01	0.01	Aliphatic ester
Geraniol	[79.32]	79.13	Monoterpenic alcohol
Geranial	79.32	0.35*	Monoterpenic aldehyde
Geranyl formate	0.08	0.08	Monoterpenic ester
2,3-Epoxygeraniol?	0.02		Oxygenated monoterpene
Geranic acid	0.01	0.01	Aliphatic acid
Geranyl acetate	9.77	9.35	Monoterpenic ester
β -Elemene	0.10	1.88*	Sesquiterpene
β -Caryophyllene	1.86	[1.88]*	Sesquiterpene
<i>trans</i> - α -Bergamotene	0.02*	[1.88]*	Sesquiterpene
α -Guaiene	[0.02]*	tr	Sesquiterpene
α -Humulene	0.11	0.11	Sesquiterpene
Selina-4,11-diene	tr	0.01	Sesquiterpene
Germacrene D	0.06	0.05	Sesquiterpene
α -Muurolole	0.03	[0.35]*	Sesquiterpene
γ -Cadinene	0.03	0.08*	Sesquiterpene
δ -Cadinene	0.02	[0.08]*	Sesquiterpene
Unknown	0.20*		Unknown
Geranyl butyrate	[0.20]*	0.19	Monoterpenic ester
(<i>E</i>)-Nerolidol	0.13	0.11	Sesquiterpenic alcohol
Caryophyllene oxide	0.17*	0.15	Sesquiterpenic ether
Caryophyllene oxide isomer	[0.17]*	0.02	Sesquiterpenic ether
Humulene epoxide II	0.01	0.01	Sesquiterpenic ether
Geranyl isovalerate	0.03		Monoterpenic ester

(3Z)-Caryophylla-3,8(13)-dien-5β-ol	0.01	0.86*	Sesquiterpenic alcohol
(2E,6E)-Farnesol	0.56	[0.86]*	Sesquiterpenic alcohol
Geranyl caproate	0.78	0.74	Monoterpenic ester
(2E,6E)-Farnesyl acetate	0.11	0.10	Sesquiterpenic ester
Phytone	0.03	0.04	Terpenic ketone
Geranyl caprylate	0.18		Monoterpenic ester
Unknown	0.01		Monoterpenic ester
Total identified	99.31%	98.77%	

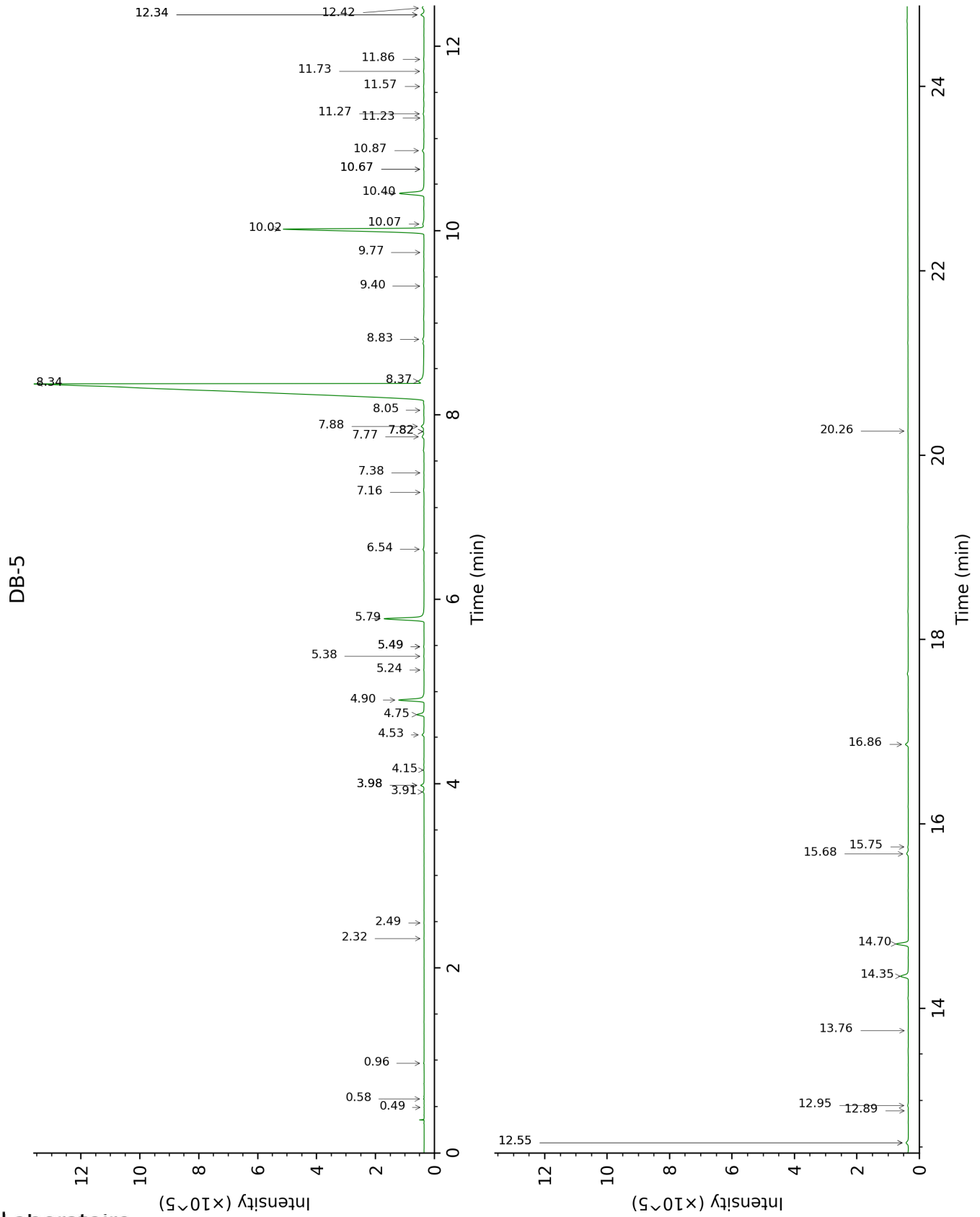
*: Two or more compounds are coeluting on this column

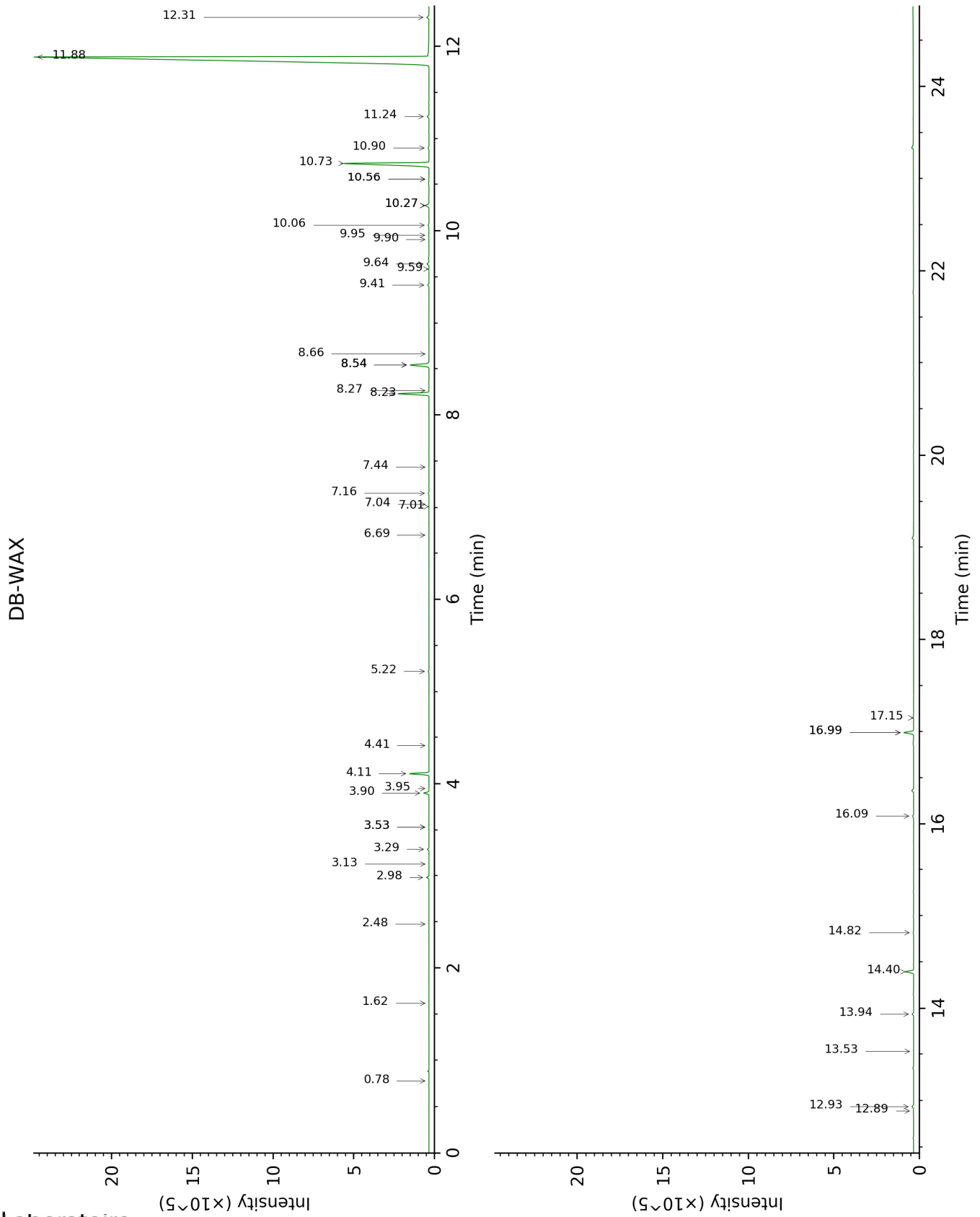
[xx]: Duplicate percentage due to coelutions, not taken account in the identified total

tr: The compound has been detected below 0.005% of total signal.

Note: no correction factor was applied

This page was intentionally left blank. The following pages present the complete data of the analysis.





FULL ANALYSIS DATA

Identification	Column DB-5			Column DB-WAX		
	R.T	R.I	%	R.T	R.I	%
2-Methyl-3-buten-2-ol	0.49	604	tr	1.62	1013	0.01
Isovaleral	0.58	638	0.01	0.78	884	0.01
Isoamyl alcohol	0.96	733	0.02	3.53*	1177	0.02
Isoamyl acetate	2.32	876	0.01	2.48	1095	0.01
2-Heptanone	2.49	890	tr	3.13	1146	tr
6-Methyl-5-hepten-2-one	3.91	986	0.05	5.22	1300	0.05
<i>trans</i> -Dehydroxylinalool oxide	3.98*	991	0.19	3.53*	1177	[0.02]
Myrcene	3.98*	991	[0.19]	2.98	1134	0.17
<i>cis</i> -Dehydroxylinalool oxide	4.15	1002	0.02	3.95	1209	0.01
Limonene	4.53	1026	0.10	3.29	1158	0.11
(<i>Z</i>)- β -Ocimene	4.75	1039	0.43	3.90	1206	0.40
(<i>E</i>)- β -Ocimene	4.90	1049	1.56	4.11	1221	1.51
<i>cis</i> -Linalool oxide (fur.)	5.24	1069	0.01	6.69	1405	0.02
Octanol	5.38	1078	0.01	8.27	1522	0.01
Terpinolene	5.49*	1085	0.02	4.41	1244	0.01
<i>trans</i> -Linalool oxide (fur.)	5.49*	1085	[0.02]	7.01	1428	0.01
Linalool	5.79	1104	2.70	8.23	1519	2.62
Citronellal	6.54	1151	0.06	7.16	1439	0.06
α -Terpineol	7.16	1190	tr	9.90†	1650	[0.05]
Decanal	7.38	1204	0.01	7.44	1460	0.01
Nerol	7.77	1229	0.15	11.24	1761	0.16
2,3-Epoxygeranial?	7.82*	1233	0.07			
Citronellol	7.82*	1233	[0.07]	10.90	1732	0.07
Neral	7.88	1237	0.22	9.64	1629	0.19
Isoamyl hexanoate	8.05	1248	0.01	7.04	1430	0.01
Geraniol	8.34†	1267	[79.32]	11.88	1816	79.13
Geranial	8.37†	1269	79.32	10.27*	1680	0.35
Geranyl formate	8.83	1300	0.08	10.06	1663	0.08
2,3-Epoxygeraniol?	9.40	1341	0.02			
Geranic acid	9.76	1366	0.01	17.15	2324	0.01
Geranyl acetate	10.02	1384	9.77	10.74	1718	9.35
β -Elemene	10.07	1387	0.10	8.54*	1543	1.88
β -Caryophyllene	10.40	1411	1.86	8.54*	1543	[1.88]
<i>trans</i> - α -Bergamotene	10.67*	1430	0.02	8.54*	1543	[1.88]
α -Guaiene	10.67*	1430	[0.02]	8.66	1552	tr
α -Humulene	10.87	1445	0.11	9.41	1611	0.11

Selina-4,11-diene	11.23	1471	tr	9.59	1624	0.01
Germacrene D	11.27	1474	0.06	9.95†	1654	0.05
α-Murolene	11.57	1496	0.03	10.27*	1680	[0.35]
γ-Cadinene	11.73	1508	0.03	10.56*†	1703	0.08
δ-Cadinene	11.86	1518	0.02	10.56*†	1703	[0.08]
Unknown [m/z 59, 68 (63), 43 (31), 67 (27), 81 (27), 94 (25), 69 (23), 41 (22), 84 (20)...]	12.34*	1556	0.20			
Geranyl butyrate	12.34*	1556	[0.20]	12.31	1854	0.19
(E)-Nerolidol	12.42	1562	0.13	13.94	2001	0.11
Caryophyllene oxide	12.55*	1572	0.17	12.93	1909	0.15
Caryophyllene oxide isomer	12.55*	1572	[0.17]	12.89	1905	0.02
Humulene epoxide II	12.89	1598	0.01	13.53	1963	0.01
Geranyl isovalerate	12.95	1603	0.03			
(3Z)-Caryophylla-3,8(13)-dien-5β-ol	13.76	1669	0.01	16.99*	2306	0.86
(2E,6E)-Farnesol	14.35	1718	0.56	16.99*	2306	[0.86]
Geranyl caproate	14.70	1748	0.78	14.40	2045	0.74
(2E,6E)-Farnesyl acetate	15.68	1834	0.11	16.09	2212	0.10
Phytone	15.75	1841	0.03	14.82	2086	0.04
Geranyl caprylate	16.86	1942	0.18			
Unknown [m/z 69, 81 (47), 109 (33), 41 (26), 95 (19), 137 (18)...]	20.26	2288	0.01			
Total identified		99.31%			98.77%	
Total reported		99.32%			98.77%	

*: Two or more compounds are coeluting on this column

[xx]: Duplicate percentage due to coelutions, not taken account in the identified total

†: Peaks apexes were resolved, but peaks overlapped and were summed for analysis

tr: The compound has been detected below 0.005% of total signal.

Note: no correction factor was applied

R.T.: Retention time (minutes)

R.I.: Retention index