

Date : May 25, 2020

CERTIFICATE OF ANALYSIS – GC PROFILING

SAMPLE IDENTIFICATION

Internal code : 20E21-PTH10

Customer identification : Blood Orange - Italy - O10109203R

Type : Essential oil

Source : *Citrus sinensis*

Customer : Plant Therapy

ANALYSIS

Method: PC-MAT-007 - Analysis of the composition of an essential oil or other volatile liquide by FAST GC-FID (in French); identifications validated by GC-MS.

Analyst : Sylvain Mercier, M. Sc., Chimiste

Analysis date : May 25, 2020

Checked and approved by :

Alexis St-Gelais, M. Sc., chimiste 2013-174

Notes: This report may not be published, including online, without the written consent from Laboratoire PhytoChemia. This report is digitally signed, it is only considered valid if the digital signature is intact. The results only describe the samples that were submitted to the assays.

PHYSICOCHEMICAL DATA

Physical aspect: Orange liquid

Refractive index: 1.4736 ± 0.0003 (20 °C; method PC-MAT-016)

ISO 3140:2011 - OIL OF SWEET ORANGE, OBTAINED BY PHYSICAL EXTRACTION OF THE PEEL

Compound	Min. %	Max. %	Observed %	Complies?
β-Sinensal	0.01	0.06	0.03	Yes
Geranial	0.05	0.20	0.09	Yes
Valencene	0.01	0.40	0.14	Yes
Neral	0.03	0.10	0.07	Yes
Linalool	0.15	0.70	0.18	Yes
Decanal	0.1	0.7	0.3	Yes
Nonanal	0.01	0.06	0.05	Yes
Octanal	0.1	0.4	0.3	Yes
Limonene	93.0	96.0	93.1	Yes
Myrcene	1.5	3.5	1.9	Yes
Sabinene	0.2	0.8	0.5	Yes
β-Pinene	0.02	0.15	0.05	Yes
α-Pinene	0.4	0.8	0.5	Yes
Refractive index	1.4700	1.4760	1.4736	Yes

CONCLUSION

No adulterant, contaminant or diluent has been detected using this method. The oil complies with the ISO standard for sweet orange oil.

ANALYSIS SUMMARY – CONSOLIDATED CONTENTS

New readers of similar reports are encouraged to read table footnotes at least once.

Identification	%	Class
α -Thujene	0.01	Monoterpene
α -Pinene	0.55	Monoterpene
Camphene	tr	Monoterpene
β -Pinene	0.05	Monoterpene
Sabinene	0.47	Monoterpene
Myrcene	1.94	Monoterpene
α -Phellandrene	0.04	Monoterpene
Pseudolimonene	0.01	Monoterpene
Octanal	0.26	Aliphatic aldehyde
Δ^3 -Carene	0.35	Monoterpene
α -Terpinene	tr	Monoterpene
para-Cymene	0.01	Monoterpene
β -Phellandrene	0.27	Monoterpene
Limonene	93.13	Monoterpene
(Z)- β -Ocimene	0.01	Monoterpene
(E)- β -Ocimene	0.04	Monoterpene
γ -Terpinene	0.02	Monoterpene
cis-Sabinene hydrate	0.01	Monoterpenic alcohol
Octanol	0.04	Aliphatic alcohol
Isoterpinolene	0.01	Monoterpene
Terpinolene	0.05	Monoterpene
Linalool	0.18	Monoterpenic alcohol
Nonanal	0.04	Aliphatic aldehyde
trans-para-Mentha-2,8-dien-1-ol	0.01	Monoterpenic alcohol
cis-Limonene oxide	0.03	Monoterpenic ether
cis-para-Mentha-2,8-dien-1-ol	0.01	Monoterpenic alcohol
trans-Limonene oxide	0.02	Monoterpenic ether
Citronellal	0.05	Monoterpenic aldehyde
α -Terpineol	0.05	Monoterpenic alcohol
cis-Piperitol	0.01	Monoterpenic alcohol
Decanal	0.28	Aliphatic aldehyde
trans-Carveol	0.01	Monoterpenic alcohol
Nerol	0.02	Monoterpenic alcohol
cis-Carveol	0.01	Monoterpenic alcohol
Neral	0.07	Monoterpenic aldehyde
Geranial	0.09	Monoterpenic aldehyde
Decanol	0.01	Aliphatic alcohol
Limonen-10-ol	0.01	Monoterpenic alcohol
Undecanal	0.01	Aliphatic aldehyde
Citronellyl acetate	0.01	Monoterpenic ester
Neryl acetate	0.02	Monoterpenic ester
α -Copaene	0.02	Sesquiterpene
Geranyl acetate	0.02	Monoterpenic ester
β -Elemene	0.02	Sesquiterpene
Dodecanal	0.06	Aliphatic aldehyde

β-Caryophyllene	0.03	Sesquiterpene
β-Copaene	0.02	Sesquiterpene
α-Humulene	0.01	Sesquiterpene
(E)-β-Farnesene	0.01	Sesquiterpene
Germacrene D	0.02	Sesquiterpene
Valencene	0.14	Sesquiterpene
α-Murolene	0.02	Sesquiterpene
γ-Cadinene	0.02	Sesquiterpene
δ-Cadinene	0.02	Sesquiterpene
Caryophyllene oxide	0.03	Sesquiterpenic ether
Unknown	0.01	Oxygenated sesquiterpene
β-Sinensal	0.03	Sesquiterpenic aldehyde
α-Sinensal	0.02	Sesquiterpenic aldehyde
Myristic acid	0.05	Aliphatic acid
Nootkatone	0.05	Sesquiterpenic ketone
Palmitic acid	0.11	Aliphatic acid
Linoleic acid	0.10	Aliphatic acid
Oleic acid	0.07	Aliphatic acid
cis-Vaccenic acid?	0.04	Aliphatic acid
Stearic acid	0.03	Aliphatic acid
Consolidated total	99.18%	

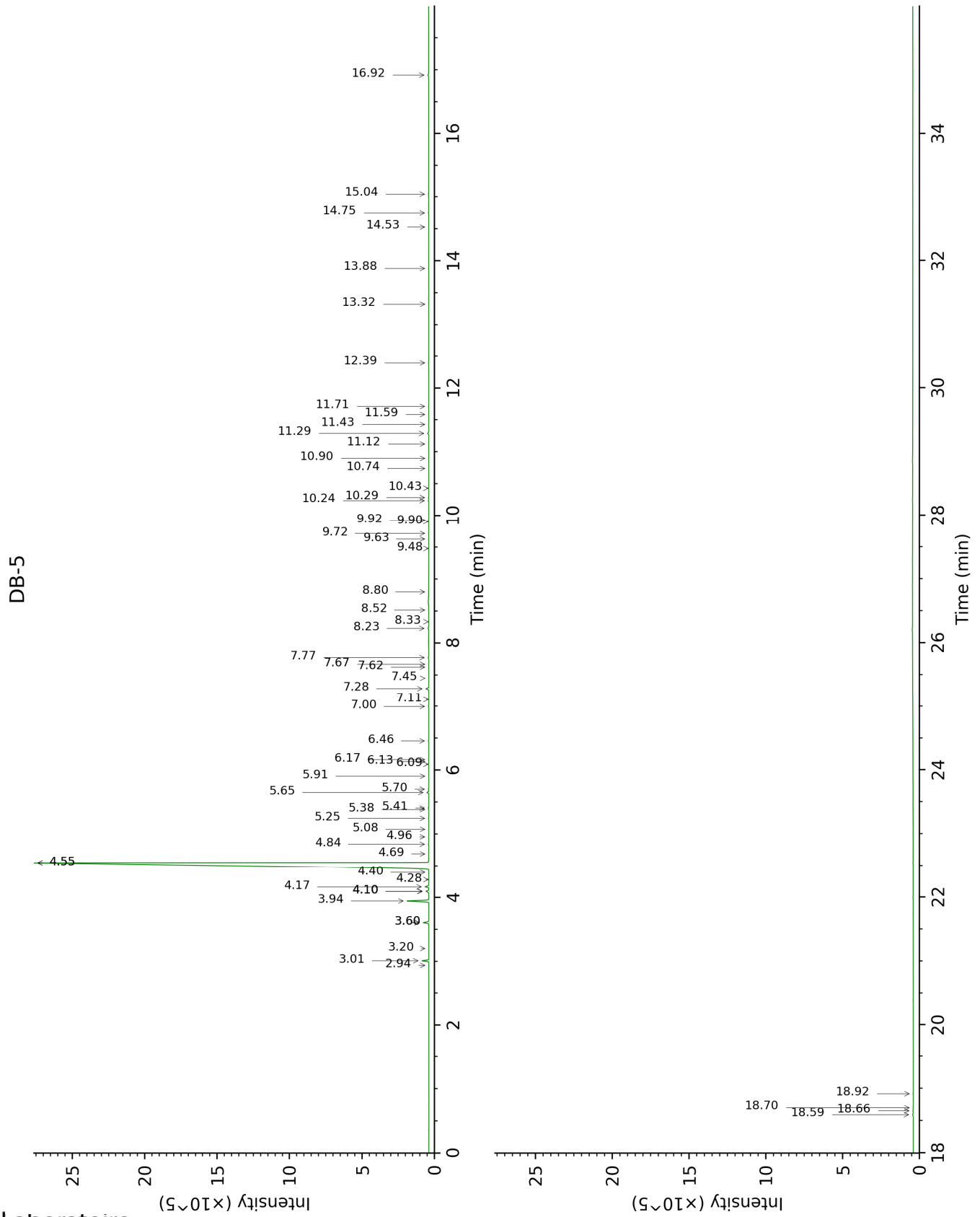
tr: The compound has been detected below 0.005% of total signal.

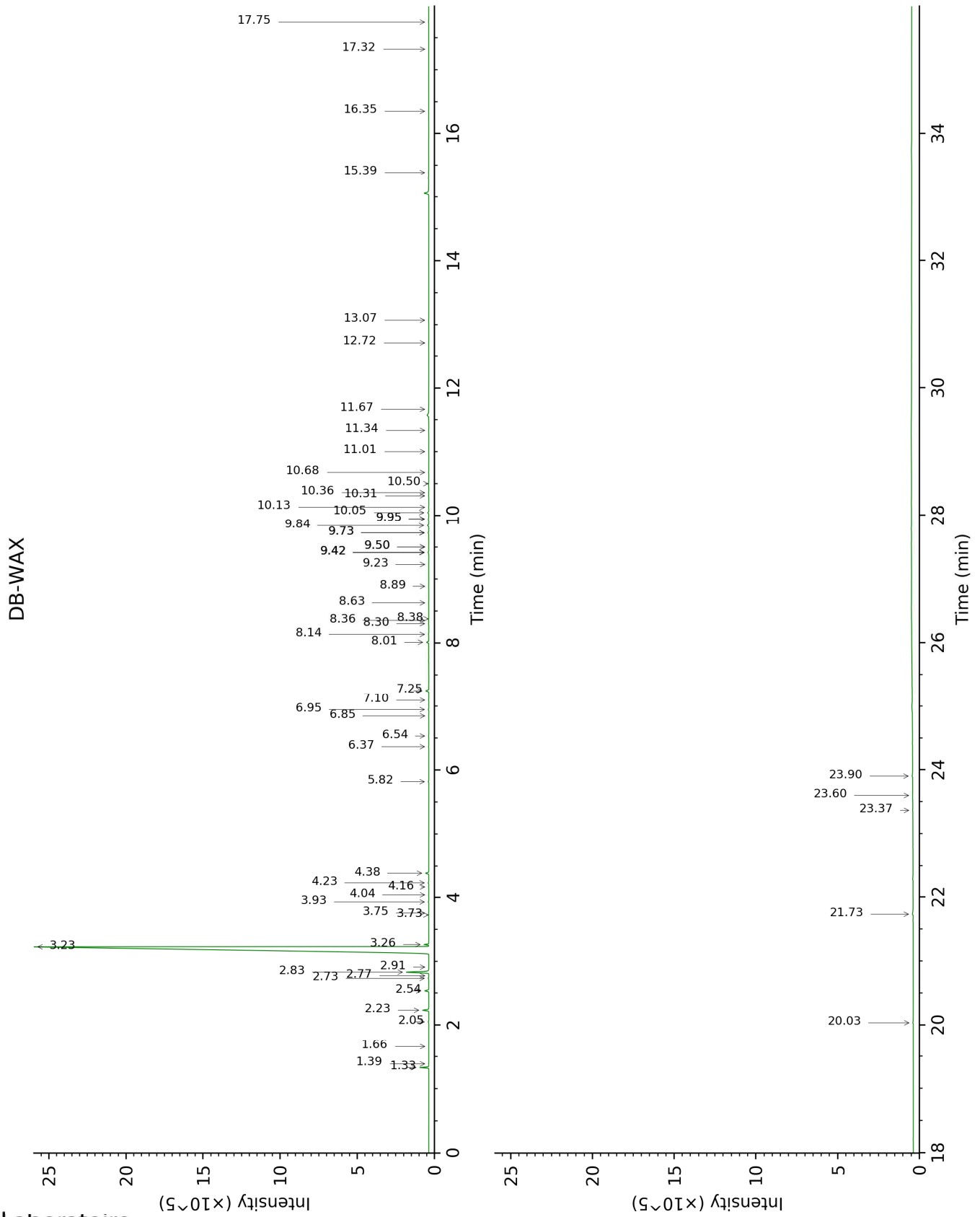
Note: no correction factor was applied

About "consolidated" data: The table above presents the breakdown of the sample volatile constituents after applying an algorithm to collapse data acquired from the multi-columns system of PhytoChemia into a single set of consolidated contents. In case of discrepancies between columns, the algorithm is set to prioritize data from the most standard DB-5 column, and smallest values so as to avoid overestimating individual content. This process is semi-automatic. Advanced users are invited to consult the "Full analysis data" table after the chromatograms in this report to access the full untreated data and perform their own calculations if needed.

Unknowns: Unknown compounds' mass spectral data is presented in the "Full analysis data" table. The occurrence of unknown compounds is to be expected in many samples, and does not denote particular problems unless noted otherwise in the conclusion.

This page was intentionally left blank. The following pages present the complete data of the analysis.





FULL ANALYSIS DATA

Identification	Column DB-5			Column DB-WAX		
	R.T	R.I	%	R.T	R.I	%
α-Thujene	2.94	925	0.01	1.39	1001	0.01
α-Pinene	3.01	930	0.55	1.33	992	0.54
Camphene	3.20	942	tr	1.66	1028	0.01
β-Pinene	3.60*	969	0.51	2.05	1067	0.05
Sabinene	3.60*	969	[0.51]	2.24	1085	0.47
Myrcene	3.94	992	1.94	2.83	1135	1.94
α-Phellandrene	4.10*	1002	0.31	2.73	1127	0.04
Pseudolimonene	4.10*	1002	[0.31]	2.78	1130	0.01
Octanal	4.10*	1002	[0.31]	4.38	1254	0.26
Δ3-Carene	4.17	1006	0.35	2.54	1112	0.34
α-Terpinene	4.28	1013	tr	2.91	1141	tr
para-Cymene	4.40	1020	0.01	4.04	1229	0.02
β-Phellandrene	4.55*	1030	93.83	3.26	1169	0.27
Limonene	4.55*	1030	[93.83]	3.23	1166	93.13
(Z)-β-Ocimene	4.69	1039	0.01	3.73	1206	0.01
(E)-β-Ocimene	4.84	1049	0.04	3.93	1220	0.04
γ-Terpinene	4.96	1056	0.02	3.76	1208	0.02
cis-Sabinene hydrate	5.08	1063	0.01	6.85	1430	0.02
Octanol	5.25	1074	0.04	8.14	1527	0.03
Isoterpinolene	5.38	1083	0.01	4.16	1238	0.01
Terpinolene	5.41	1084	0.05	4.23	1243	0.06
Linalool	5.65	1100	0.18	8.01	1517	0.19
Nonanal	5.70	1103	0.04	5.82	1354	0.05
trans-para-Mentha-2,8-dien-1-ol	5.91	1116	0.01	8.89	1585	0.01
cis-Limonene oxide	6.09	1128	0.03	6.37	1394	0.03
cis-para-Mentha-2,8-dien-1-ol	6.14	1131	0.01	9.42*	1628	0.09
trans-Limonene oxide	6.17	1133	0.02	6.54	1406	0.02
Citronellal	6.46	1152	0.05	6.95	1437	0.05
α-Terpineol	7.00	1187	0.05	9.73*	1653	0.08
cis-Piperitol	7.11	1195	0.01	9.50*	1635	0.02
Decanal	7.28	1206	0.28	7.25	1460	0.27
trans-Carveol	7.45	1218	0.01	11.34	1788	0.02
Nerol	7.62	1229	0.02	11.01	1760	0.02
cis-Carveol	7.67	1233	0.01	11.67	1817	0.02
Neral	7.77	1240	0.07	9.42*	1628	[0.09]
Geranial	8.23	1271	0.09	10.05	1679	0.10
Decanol	8.33	1279	0.01	10.68	1732	0.03
Limonen-10-ol	8.52	1291	0.01	13.07	1943	0.02
Undecanal	8.80	1307	0.01	8.63	1565	0.02
Citronellyl acetate	9.48	1355	0.01	9.42*	1628	[0.09]
Neryl acetate	9.63	1365	0.02	10.13	1686	0.03

α-Copaene	9.72	1371	0.02	7.10	1448	0.02
Geranyl acetate	9.90	1385	0.02	10.50	1717	0.03
β-Elemene	9.92	1386	0.02	8.38	1546	0.01
Dodecanal	10.24	1408	0.06	9.95*	1671	0.07
β-Caryophyllene	10.29	1412	0.03	8.36	1544	0.03
β-Copaene	10.43	1423	0.02	8.30	1540	0.02
α-Humulene	10.74	1446	0.01	9.23	1613	0.02
(E)-β-Farnesene	10.90	1458	0.01	9.50*	1635	[0.02]
Germacrene D	11.12	1474	0.02	9.73*	1653	[0.08]
Valencene	11.29	1487	0.14	9.84	1662	0.13
α-Murolene	11.43	1497	0.02	9.95*	1671	[0.07]
γ-Cadinene	11.59	1509	0.02	10.31	1701	0.03
δ-Cadinene	11.71	1519	0.02	10.36	1705	0.03
Caryophyllene oxide	12.39	1572	0.03	12.72	1910	0.01
Unknown [m/z 41, 91 (96), 79 (88), 69 (82), 123 (80), 93 (80)... 220 (8)]	13.32	1648	0.01	17.32	2369	0.01
β-Sinensal	13.88	1694	0.03	15.39	2167	0.02
α-Sinensal	14.53	1749	0.02	16.35	2265	0.02
Myristic acid	14.75	1769	0.05	20.03	2680	0.08
Nootkatone	15.04	1794	0.05	17.75	2415	0.04
Palmitic acid	16.92	1967	0.11	21.73	2892	0.14
Linoleic acid	18.59	2134	0.10	23.90	3185	0.10
Oleic acid	18.66	2141	0.07	23.60	3143	0.04
cis-Vaccenic acid?	18.70	2145	0.04			
Stearic acid	18.92	2168	0.03	23.37	3110	0.04
Total identified		99.59%			99.24%	
Total reported		99.59%			99.24%	

*: Two or more compounds are coeluting on this column

[xx]: Duplicate percentage due to coelutions, not taken into account in the consolidated total

tr: The compound has been detected below 0.005% of total signal.

Note: no correction factor was applied
R.T.: Retention time (minutes)
R.I.: Retention index