

Date : November 13, 2018

CERTIFICATE OF ANALYSIS – GC PROFILING

SAMPLE IDENTIFICATION

Internal code : 18K09-PTH4-1-CC

Customer identification : May Chang - China - M3010688R

Type : Essential oil

Source : *Litsea cubeba*

Customer : Plant Therapy

ANALYSIS

Method: PC-PA-014-17J19 - Analysis of the composition of an essential oil, or other volatile liquid, by FAST GC-FID (in French); identifications validated by GC-MS.

Analyst : Lindsay Girard, B. Sc.

Analysis date : November 13, 2018

Checked and approved by :

Alexis St-Gelais, M. Sc., chimiste 2013-174

Note: This report may not be published, including online, without the written consent from Laboratoire PhytoChemia.

This report is digitally signed, it is only considered valid if the digital signature is intact.

PHYSICOCHEMICAL DATA

Physical aspect: Light yellow liquid

Refractive index: 1.4835 ± 0.0003 (20 °C)

CONCLUSION

No adulterant, contaminant or diluent has been detected using this method.

ANALYSIS SUMMARY

Identification	DB-5 (%)	DB-WAX (%)	Classe
2-Methyl-3-buten-2-ol	0.01	0.02	Aliphatic alcohol
Isovaleral	tr		Aliphatic aldehyde
Toluene	tr	0.02*	Simple phenolic
Unknown	tr	0.01	Unknown
Unknown	tr	0.01	Unknown
Tricyclene	0.01	0.01	Monoterpene
α -Thujene	0.02	[0.02]*	Monoterpene
α -Pinene	0.93	0.92	Monoterpene
Camphene	0.25	0.25	Monoterpene
β -Pinene	1.16*	0.68	Monoterpene
Sabinene	[1.16]*	0.47	Monoterpene
6-Methyl-5-hepten-2-one	0.62	0.59	Aliphatic ketone
Myrcene	0.81	0.80	Monoterpene
6-Methyl-5-hepten-2-ol	0.03	0.03	Aliphatic alcohol
α -Phellandrene	0.03	0.03	Monoterpene
α -Terpinene	0.01	0.01	Monoterpene
para-Cymene	0.02	0.02	Monoterpene
Limonene	11.00*	9.62	Monoterpene
1,8-Cineole	[11.00]*	1.28*	Monoterpenic ether
β -Phellandrene	[11.00]*	[1.28]*	Monoterpene
(Z)- β -Ocimene	0.01	0.01	Monoterpene
(E)- β -Ocimene	0.02	0.01	Monoterpene
2,6-Dimethyl-5-heptenal (melonal)	0.01	0.01	Aliphatic aldehyde
γ -Terpinene	0.03	0.03	Monoterpene
cis-Sabinene hydrate	0.02	0.04	Monoterpenic alcohol
cis-Linalool oxide (fur.)	0.01	0.03*	Monoterpenic alcohol
Terpinolene	0.06	0.06	Monoterpene
6,7-Epoxymyrcene	0.01	0.02	Monoterpenic ether
Rosefuran	0.02	0.02	Monoterpenic ether
Linalool	2.44	2.45	Monoterpenic alcohol
cis-Chrysanthemal?	0.01	0.01	Monoterpenic aldehyde
cis-para-Menth-2-en-1-ol	0.02	0.02	Monoterpenic alcohol
cis-Limonene oxide	0.02	[0.03]*	Monoterpenic ether
cis-para-Mentha-2,8-dien-1-ol	0.02	29.34*	Monoterpenic alcohol
trans-Limonene oxide	0.03	0.02	Monoterpenic ether
trans-Chrysanthemal	0.17*	0.01	Monoterpenic aldehyde
exo-Isocitral	[0.17]*	0.16	Monoterpenic aldehyde
Citronellal	1.28	1.26	Monoterpenic aldehyde
Borneol	0.05	0.50*	Monoterpenic alcohol
Isoneral	0.80	0.77	Monoterpenic aldehyde
Terpinen-4-ol	0.10*	0.10*	Monoterpenic alcohol
Rosefuran oxide	[0.10]*	[0.10]*	Monoterpenic ether
Unknown	0.07	0.07	Oxygenated monoterpene
Isogeranial	1.26	1.22	Monoterpenic aldehyde
α -Terpineol	0.45	[0.50]*	Monoterpenic alcohol
Methyl salicylate	0.02	0.02	Phenolic ester
trans-Isopiperitenol	0.01	0.01*	Monoterpenic alcohol
trans-Piperitol	0.04	0.07*	Monoterpenic alcohol

<i>cis</i> -Isopiperitenol	0.01	[0.01]*	Monoterpenic alcohol
Nerol	0.74	0.73	Monoterpenic alcohol
Citronellol	1.12	1.14	Monoterpenic alcohol
Neral	29.33	[29.34]*	Monoterpenic aldehyde
Piperitone	0.06	0.08	Monoterpenic ketone
Geraniol	1.03	1.09	Monoterpenic alcohol
Geranial	41.56	41.65*	Monoterpenic aldehyde
Unknown	0.09	0.08	Oxygenated monoterpene
Neric acid	0.06	0.07	Monoterpenic acid
Unknown	0.11	0.08	Unknown
Unknown	0.04	0.16*	Unknown
Geranic acid	0.38	0.41	Aliphatic acid
Unknown	0.14	[0.16]*	Unknown
Geranyl acetate	0.05	0.06	Monoterpenic ester
β -Elemene	0.14	1.36*	Sesquiterpene
β -Caryophyllene	1.23	[1.36]*	Sesquiterpene
α -Humulene	0.12	0.12	Sesquiterpene
(<i>E</i>)- β -Farnesene	0.02	0.02	Sesquiterpene
Bicyclogermacrene	0.05		Sesquiterpene
β -Bisabolene	0.01	[41.65]*	Sesquiterpene
δ -Cadinene	0.02	[0.07]*	Sesquiterpene
Unknown	0.02		Oxygenated sesquiterpene
α -Elemol	0.02	0.02	Sesquiterpenic alcohol
Spathulenol	0.02	0.02	Sesquiterpenic alcohol
Caryophyllene oxide	0.15*	0.12	Sesquiterpenic ether
Caryophyllene oxide isomer	[0.15]*	0.03	Sesquiterpenic ether
Humulene epoxide II	0.02	[0.16]*	Sesquiterpenic ether
Unknown	0.01		Unknown
Unknown	0.02		Unknown
Unknown	0.05		Unknown
Unknown	0.01		Unknown
Unknown	0.04		Unknown
Unknown	0.04		Unknown
Unknown	0.07		Unknown
Total identified	97.92%	98.02%	

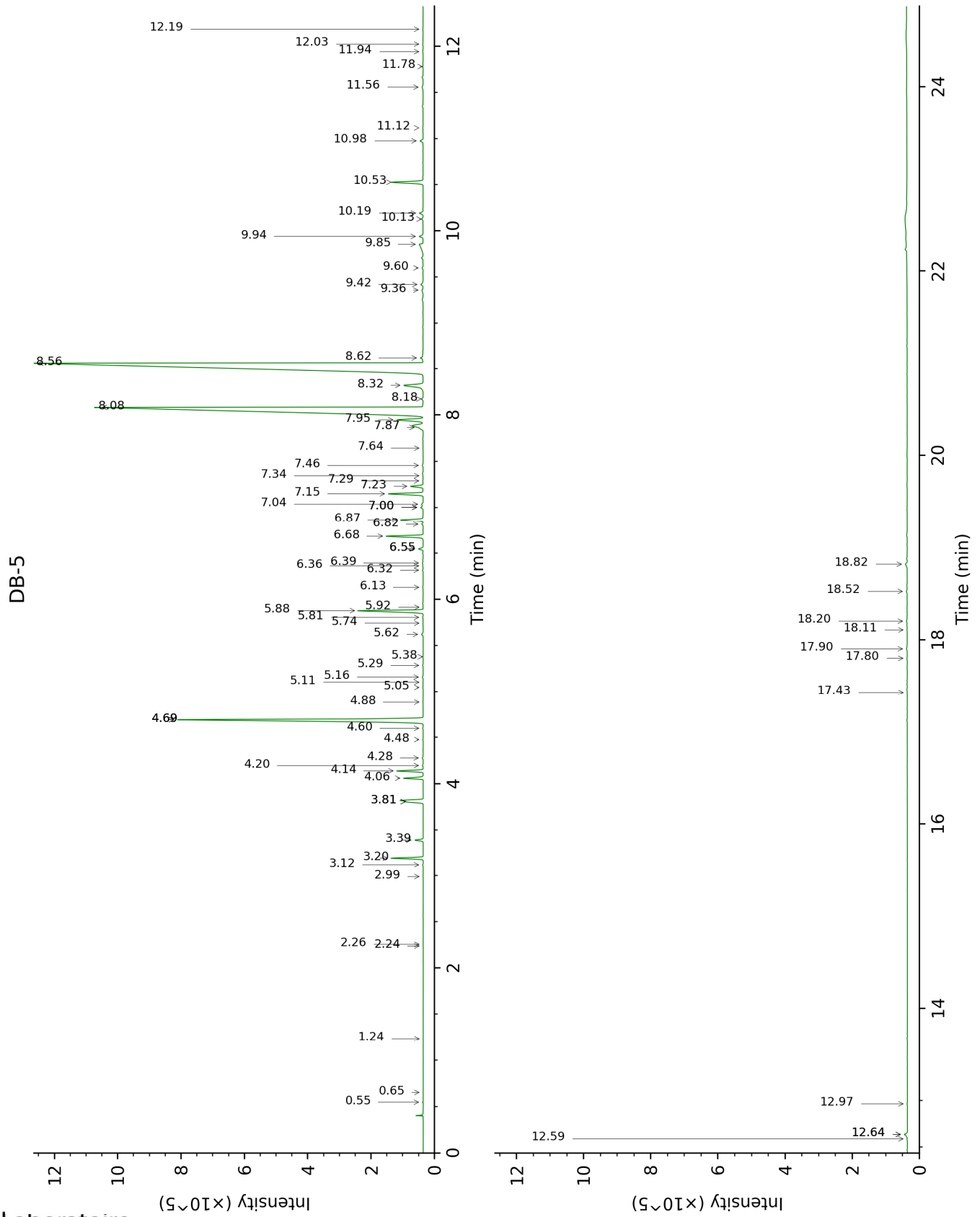
*: Two or more compounds are coeluting on this column

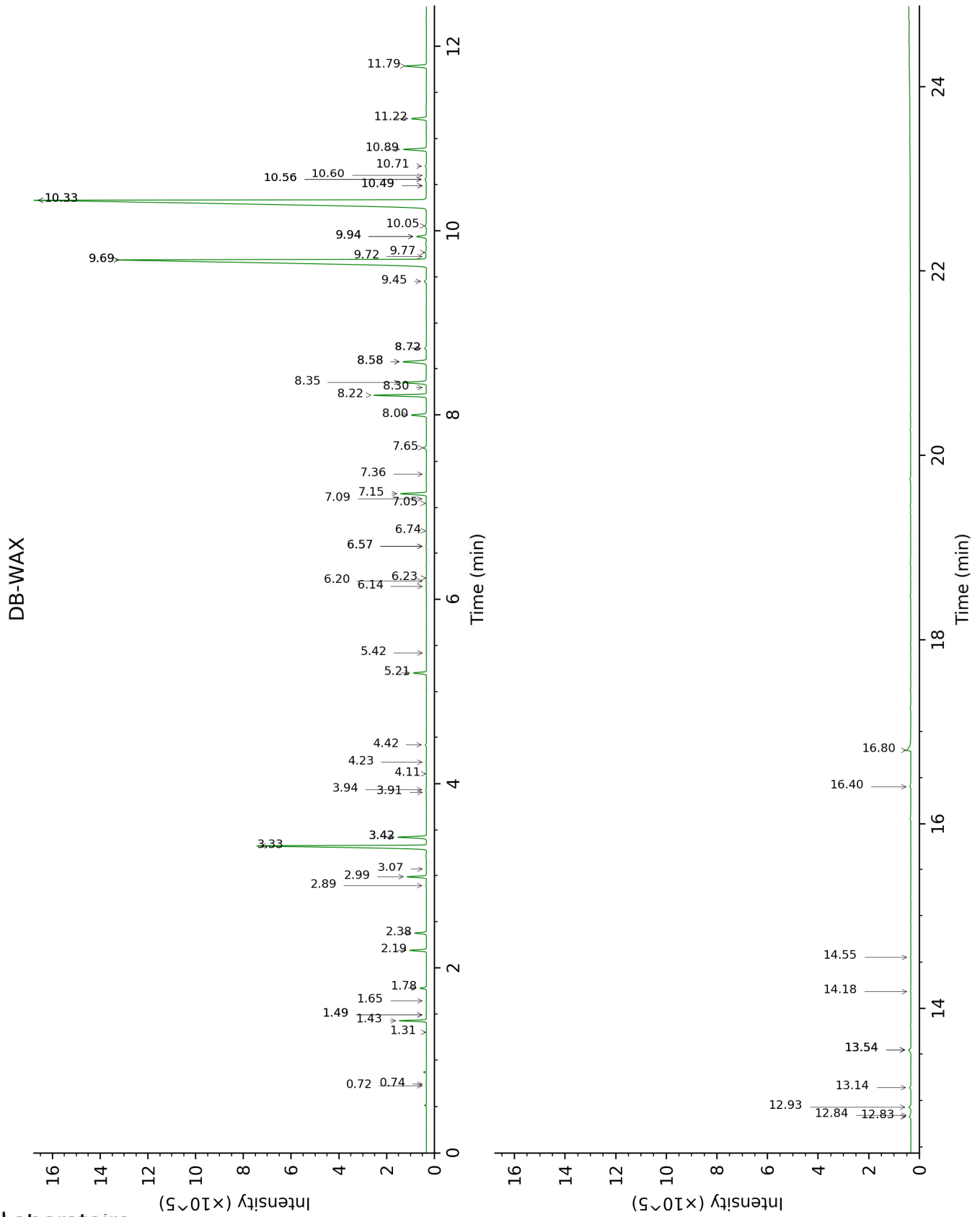
[xx]: Duplicate percentage due to coelutions, not taken account in the identified total

tr: The compound has been detected below 0.005% of total signal.

Note: no correction factor was applied

This page was intentionally left blank. The following pages present the complete data of the analysis.





FULL ANALYSIS DATA

Identification	Column DB-5			Column DB-WAX		
	R.T	R.I	%	R.T	R.I	%
2-Methyl-3-buten-2-ol	0.55	608	0.01	1.65	1016	0.02
Isovaleral	0.65	642	tr			
Toluene	1.24	757	tr	1.49*	1001	0.02
Unknown [m/z 55, 83 (89), 82 (70), 67 (66), 41 (55), 69 (46), 111 (37)... 126 (2)]	2.24	858	tr	0.74	874	0.01
Unknown [m/z 55, 83 (79), 67 (65), 41 (63), 82 (60), 69 (58)... 111 (27), 126 (9)]	2.26	859	tr	0.72	868	0.01
Tricyclene	2.99	916	0.01	1.31	974	0.01
α -Thujene	3.12	925	0.02	1.49*	1001	[0.02]
α -Pinene	3.20	930	0.93	1.43	993	0.92
Camphene	3.39	942	0.25	1.78	1028	0.25
β -Pinene	3.81*†	970	1.16	2.19	1067	0.68
Sabinene	3.81*†	970	[1.16]	2.38	1085	0.47
6-Methyl-5-hepten-2-one	4.06	986	0.62	5.21	1298	0.59
Myrcene	4.14	992	0.81	2.99	1134	0.80
6-Methyl-5-hepten-2-ol	4.20	995	0.03	7.09	1435	0.03
α -Phellandrene	4.28	1001	0.03	2.89	1127	0.03
α -Terpinene	4.48	1013	0.01	3.07	1141	0.01
para-Cymene	4.60	1021	0.02	4.23	1231	0.02
Limonene	4.69*	1027	11.00	3.33	1161	9.62
1,8-Cineole	4.69*	1027	[11.00]	3.42*	1168	1.28
β -Phellandrene	4.69*	1027	[11.00]	3.42*	1168	[1.28]
(Z)- β -Ocimene	4.88	1039	0.01	3.91	1206	0.01
(E)- β -Ocimene	5.05	1049	0.02	4.11	1221	0.01
2,6-Dimethyl-5-heptenal (melonal)	5.10	1053	0.01	5.42	1314	0.01
γ -Terpinene	5.16	1056	0.03	3.94	1208	0.03
cis-Sabinene hydrate	5.29	1064	0.02	7.05	1431	0.04
cis-Linalool oxide (fur.)	5.38	1070	0.01	6.57*	1396	0.03
Terpinolene	5.62	1085	0.06	4.42	1245	0.06
6,7-Epoxymyrcene	5.74	1093	0.01	6.20	1370	0.02
Rosefuran	5.81	1097	0.02	6.14	1365	0.02
Linalool	5.88	1102	2.44	8.22	1519	2.45
cis-Chrysanthemal?	5.92	1104	0.01	6.23	1372	0.01
cis-para-Menth-2-en-1-ol	6.13	1118	0.02	8.30	1525	0.02

<i>cis</i> -Limonene oxide	6.32	1130	0.02	6.57*	1396	[0.03]
<i>cis</i> -para-Mentha-2,8-dien-1-ol	6.36	1133	0.02	9.69*	1634	29.34
<i>trans</i> -Limonene oxide	6.39	1135	0.03	6.74	1409	0.02
<i>trans</i> -Chrysanthemal	6.55*	1145	0.17	7.36	1454	0.01
exo-Isocitral	6.55*	1145	[0.17]	7.65	1476	0.16
Citronellal	6.68	1154	1.28	7.15	1439	1.26
Borneol	6.82	1162	0.05	9.94*	1654	0.50
Isoneral	6.87	1166	0.80	8.00	1502	0.77
Terpinen-4-ol	7.00*	1174	0.10	8.72*	1558	0.10
Rosefuran oxide	7.00*	1174	[0.10]	8.72*	1558	[0.10]
Unknown [m/z 84, 83 (74), 137 (56), 41 (47), 93 (43), 108 (40)... 152 (2)]	7.04	1177	0.07	9.77	1640	0.07
Isogeranial	7.15	1184	1.26	8.35	1529	1.22
α -Terpineol	7.23	1189	0.45	9.94*	1654	[0.50]
Methyl salicylate	7.29	1193	0.02	10.60	1708	0.02
<i>trans</i> -Isopiperitenol	7.34	1197	0.01	10.49*	1699	0.01
<i>trans</i> -Piperitol	7.46	1204	0.04	10.56*	1704	0.07
<i>cis</i> -Isopiperitenol	7.64	1217	0.01	10.49*	1699	[0.01]
Nerol	7.87	1232	0.74	11.22	1760	0.73
Citronellol	7.95	1238	1.12	10.89	1732	1.14
Neral	8.08	1247	29.33	9.69*	1634	[29.34]
Piperitone	8.18	1253	0.06	10.05	1663	0.08
Geraniol	8.32	1263	1.03	11.79	1809	1.09
Geranial	8.56	1280	41.56	10.33*	1686	41.65
Unknown [m/z 43, 69 (77), 41 (70), 109 (54)... 152 (6)]	8.62	1284	0.09	13.14	1930	0.08
Neric acid	9.36	1329	0.06	16.40	2248	0.07
Unknown [m/z 82, 59 (44), 41 (43), 95 (31), 43 (29), 81 (24)...]	9.42	1334	0.11	12.83	1901	0.08
Unknown [m/z 110, 95 (98), 109 (40), 43 (35), 111 (32)... 153 (13)...]	9.60	1346	0.04	13.54*	1967	0.16
Geranic acid	9.85	1365	0.38	16.80	2289	0.41
Unknown [m/z 81, 59 (94), 41 (74), 85 (40), 43 (55)...]	9.94	1371	0.14	13.54*	1967	[0.16]
Geranyl acetate	10.13	1384	0.05	10.71	1717	0.06
β -Elemene	10.19	1389	0.14	8.58*	1546	1.36
β -Caryophyllene	10.52	1413	1.23	8.58*	1546	[1.36]
α -Humulene	10.98	1447	0.12	9.45	1615	0.12
(<i>E</i>)- β -Farnesene	11.12	1458	0.02	9.72	1637	0.02

Bicyclogermacrene	11.56	1491	0.05			
β-Bisabolene	11.78	1508	0.01	10.33*	1686	[41.65]
δ-Cadinene	11.94	1520	0.02	10.56*	1704	[0.07]
Unknown [m/z 69, 41 (80), 82 (63), 43 (57), 98 (54)... 220 (t)]	12.03	1527	0.02			
α-Elemol	12.19	1540	0.02	14.18	2027	0.02
Spathulenol	12.59	1572	0.02	14.55	2063	0.02
Caryophyllene oxide	12.64*†	1575	0.15	12.93	1910	0.12
Caryophyllene oxide isomer	12.64*†	1575	[0.15]	12.84	1902	0.03
Humulene epoxide II	12.97	1601	0.02	13.54*	1967	[0.16]
Unknown [m/z 41, 69 (95), 109 (41), 95 (39), 55 (36), 121 (36)...]	17.43	1998	0.01			
Unknown [m/z 69, 41 (90), 95 (49), 109 (43), 219 (43), 55 (30)...]	17.80	2034	0.02			
Unknown [m/z 69, 41 (94), 81 (42), 109 (39), 107 (33), 43 (31)...]	17.90	2044	0.05			
Unknown [m/z 69, 41 (73), 81 (55), 109 (26), 95 (25), 94 (20)...]	18.11	2064	0.01			
Unknown [m/z 69, 41 (73), 55 (46), 95 (40), 109 (39), 91 (39)...]	18.20	2074	0.04			
Unknown [m/z 69, 41 (64), 81 (32), 109 (23), 94 (19), 95 (18)...]	18.52	2106	0.04			
Unknown [m/z 69, 41 (38), 151 (36), 123 (34), 82 (24), 43 (23), 109 (21)...]	18.82	2136	0.07			
Total identified		97.92%			98.02%	
Total reported		98.63%			98.26%	

*: Two or more compounds are coeluting on this column

[xx]: Duplicate percentage due to coelutions, not taken account in the identified total

†: Peaks apexes were resolved, but peaks overlapped and were summed for analysis

tr: The compound has been detected below 0.005% of total signal.

Note: no correction factor was applied

R.T.: Retention time (minutes)

R.I.: Retention index