



GC/MS BATCH NUMBER: H80103

ESSENTIAL OIL: HO WOOD

BOTANICAL NAME: CINNAMOMUM CAMPHORA

ORIGIN: CHINA

KEY CONSTITUENTS PRESENT IN THIS BATCH OF HO WOOD OIL	%
LINALOOL	98.2

Comments from Robert Tisserand: Light, Lavender-Rose odor quality. Constituents are in expected amounts.

Date : September 19, 2018

CERTIFICATE OF ANALYSIS – GC PROFILING

SAMPLE IDENTIFICATION

Internal code : 18I10-PTH1-1-CC

Customer identification : Ho Wood - China - H8010386R

Type : Essential oil

Source : *Cinnamomum camphora*

Customer : Plant Therapy

ANALYSIS

Method: PC-PA-014-17J19 - Analysis of the composition of an essential oil, or other volatile liquid, by FAST GC-FID (in French); identifications validated by GC-MS.

Analyst : Lindsay Girard, B. Sc.

Analysis date : September 11, 2018

Checked and approved by :

Alexis St-Gelais, M. Sc., chimiste 2013-174

Note: This report may not be published, including online, without the written consent from Laboratoire PhytoChemia.

This report is digitally signed, it is only considered valid if the digital signature is intact.

PHYSICOCHEMICAL DATA

Physical aspect: Clear liquid

Refractive index: 1.4615 ± 0.0003 (20 °C)

CONCLUSION

No adulterant, contaminant or diluent has been detected using this method.

ANALYSIS SUMMARY

Identification	DB-5 (%)	DB-WAX (%)	Classe
Sabinene	tr	tr	Monoterpene
Myrcene	0.03	0.03	Monoterpene
α -Phellandrene	tr	0.01	Monoterpene
α -Terpinene	0.01	0.01	Monoterpene
para-Cymene	0.14	0.02	Monoterpene
β -Phellandrene	[0.14]*	0.08*	Monoterpene
1,8-Cineole	[0.14]*	[0.08]*	Monoterpenic ether
Limonene	[0.14]*	0.04	Monoterpene
(Z)- β -Ocimene	0.02	0.02	Monoterpene
(E)- β -Ocimene	0.09	0.06	Monoterpene
γ -Terpinene	0.01	0.01	Monoterpene
cis-Sabinene hydrate	0.03	0.55*	Monoterpenic alcohol
cis-Linalool oxide (fur.)	0.18	0.17	Monoterpenic alcohol
Fenchone	0.01	0.02	Aliphatic alcohol
Terpinolene	0.44*	0.02	Monoterpene
trans-Linalool oxide (fur.)	[0.44]*	[0.55]*	Monoterpenic alcohol
Linalool	98.22	97.68	Monoterpenic alcohol
cis-Limonene oxide	0.01	0.01	Monoterpenic ether
trans-Limonene oxide	0.05	0.07	Monoterpenic ether
Camphor	0.09	0.19	Monoterpenic ketone
Unknown	0.02	0.01	Oxygenated monoterpene
Cryptone	tr	tr	Normonoterpenic ketone
α -Terpineol	0.01		Monoterpenic alcohol
cis-Piperitol	0.01		Monoterpenic alcohol
Hodiendiol	0.04		Monoterpenic alcohol
α -Phellandrene epoxide	0.01	0.01	Monoterpenic ether
Dodecane	0.07		Alkane
Unknown	0.05		Unknown
Unknown	0.01		Oxygenated monoterpene
Unknown	tr		Unknown
Total identified	99.47%	99.00%	

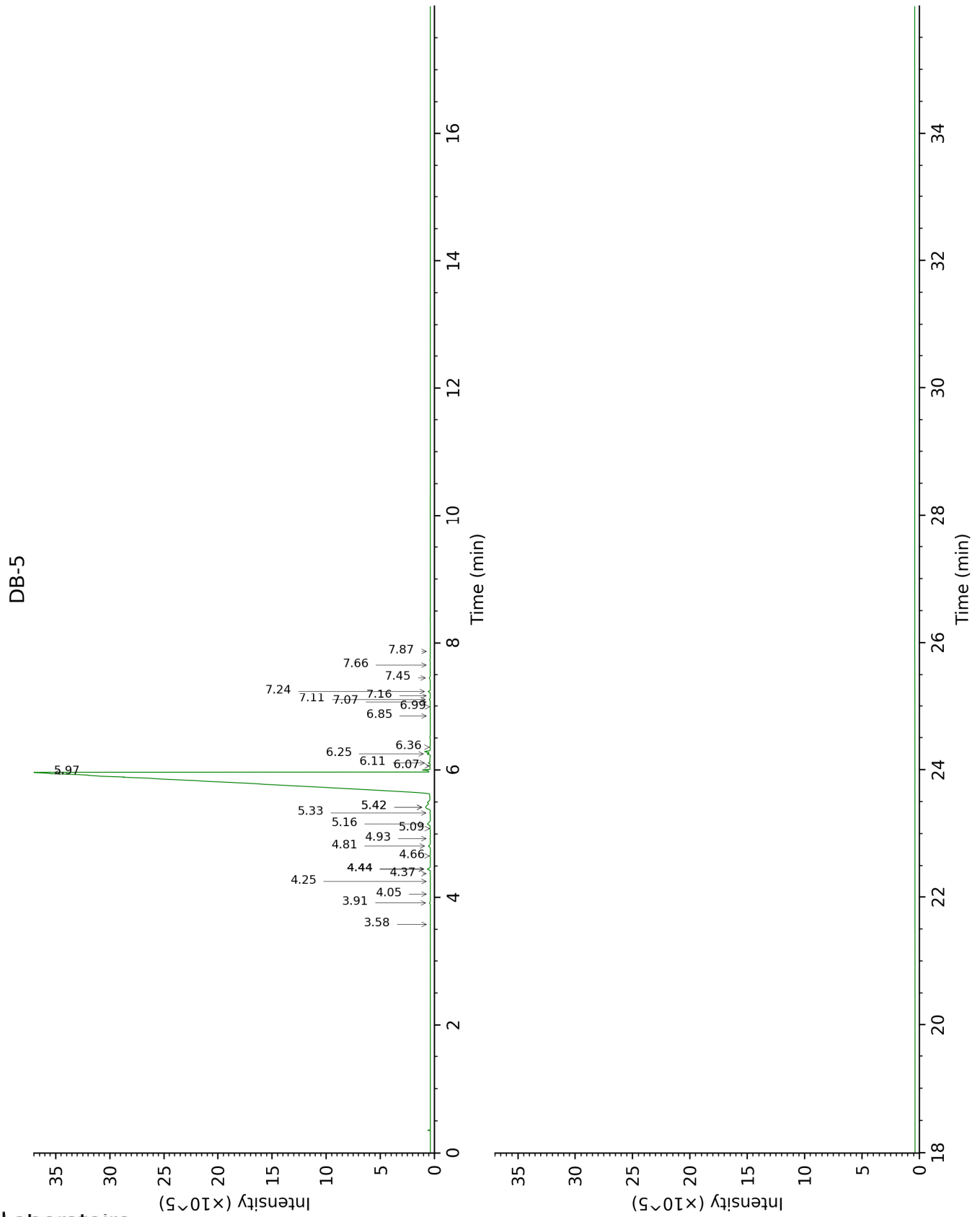
*: Two or more compounds are coeluting on this column

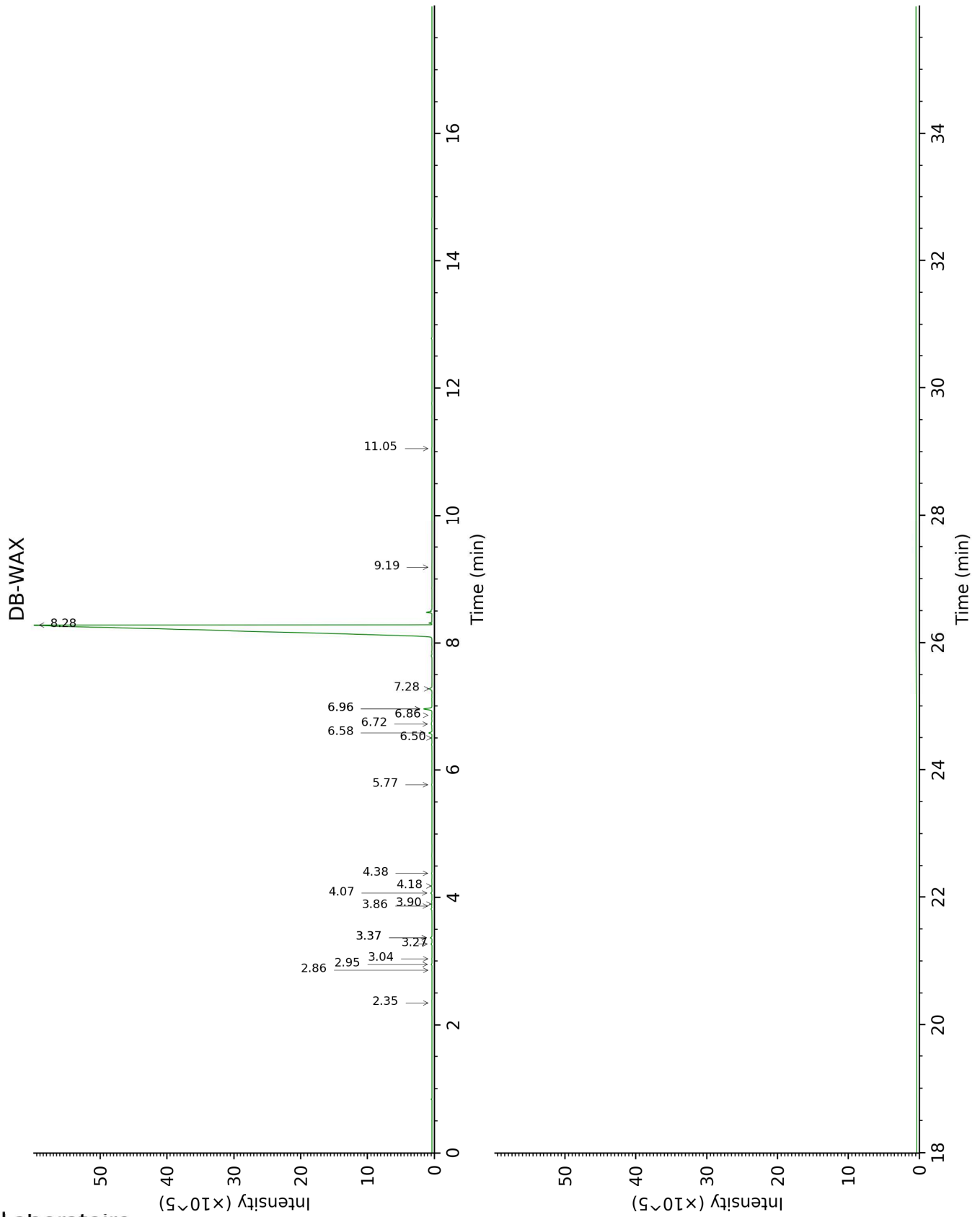
[xx]: Duplicate percentage due to coelutions, not taken account in the identified total

tr: The compound has been detected below 0.005% of total signal.

Note: no correction factor was applied

This page was intentionally left blank. The following pages present the complete data of the analysis.





FULL ANALYSIS DATA

Identification	Column DB-5			Column DB-WAX		
	R.T	R.I	%	R.T	R.I	%
Sabinene	3.58	968	tr	2.35	1088	tr
Myrcene	3.91	990	0.03	2.95	1139	0.03
α -Phellandrene	4.05	1000	tr	2.86	1132	0.01
α -Terpinene	4.25	1012	0.01	3.04	1145	0.01
para-Cymene	4.37†	1020	0.14	4.18	1230	0.02
β -Phellandrene	4.44*†	1025	[0.14]	3.37*	1170	0.08
1,8-Cineole	4.44*†	1025	[0.14]	3.37*	1170	[0.08]
Limonene	4.44*†	1025	[0.14]	3.27	1163	0.04
(Z)- β -Ocimene	4.66	1038	0.02	3.86	1208	0.02
(E)- β -Ocimene	4.81	1048	0.09	4.07	1222	0.06
γ -Terpinene	4.93	1055	0.01	3.90	1210	0.01
cis-Sabinene hydrate	5.09	1065	0.03	6.96*	1429	0.55
cis-Linalool oxide (fur.)	5.16	1070	0.18	6.58	1402	0.17
Fenchone	5.33	1081	0.01	5.77	1344	0.02
Terpinolene	5.42*	1086	0.44	4.38	1244	0.02
trans-Linalool oxide (fur.)	5.42*	1086	[0.44]	6.96*	1429	[0.55]
Linalool	5.97	1121	98.22	8.28	1528	97.68
cis-Limonene oxide	6.07	1128	0.01	6.50	1396	0.01
trans-Limonene oxide	6.11	1130	0.05	6.72	1412	0.07
Camphor	6.26	1140	0.09	7.28	1453	0.19
Unknown [m/z 109, 41 (49), 124 (41), 43 (31), 95 (28), 84 (22)... 152 (7)]	6.36	1146	0.02	6.86	1422	0.01
Cryptone	6.85	1178	tr	9.19	1598	tr
α -Terpineol	6.99	1187	0.01			
cis-Piperitol	7.07	1192	0.01			
Hodiendiol	7.10	1194	0.04			
α -Phellandrene epoxide	7.16	1198	0.01	11.05	1752	0.01
Dodecane	7.24	1203	0.07			
Unknown [m/z 43, 97 (72), 41 (44), 71 (27), 55 (26), 82 (25)...]	7.45	1217	0.05			
Unknown [m/z 137, 152 (28), 43 (25), 91 (24), 109 (23), 119 (19)]	7.66	1231	0.01			
Unknown [m/z 43, 97 (69), 107	7.87	1245	tr			

(46), 41 (28), 55 (21), 109 (20)...		
Total identified	99.47%	99.00%
Total reported	99.56%	99.01%

*: Two or more compounds are coeluting on this column

[xx]: Duplicate percentage due to coelutions, not taken account in the identified total

†: Peaks apexes were resolved, but peaks overlapped and were summed for analysis

tr: The compound has been detected below 0.005% of total signal.

Note: no correction factor was applied

R.T.: Retention time (minutes)

R.I.: Retention index