

Date : November 25, 2020

CERTIFICATE OF ANALYSIS – GC PROFILING

SAMPLE IDENTIFICATION

Internal code : 20K24-PTH01


Customer identification : Cypress ORGANIC - France - CB9103204R

Type : Essential oil

Source : *Cupressus sempervirens*

Customer : Plant Therapy

ANALYSIS

Method: PC-MAT-014  - Analysis of the composition of an essential oil or other volatile liquid by FAST GC-FID (in French); identifications validated by GC-MS.

Analyst : Sylvain Mercier, M. Sc., Chimiste

Analysis date : November 25, 2020

Checked and approved by :

Alexis St-Gelais, M. Sc., chimiste 2013-174

Notes: This report may not be published, including online, without the written consent from Laboratoire PhytoChemia. This report is digitally signed, it is only considered valid if the digital signature is intact. The results only describe the samples that were submitted to the assays.

PHYSICOCHEMICAL DATA

Physical aspect: Faintly yellow liquid

Refractive index: 1.4712 ± 0.0003 (20 °C; method PC-MAT-016)

NFT 75-254:1992 - OIL OF CUPRESSUS

Compound	Min. %	Max. %	Observed %	Complies?
Manoyl oxide	tr		0.12	Yes
Isopimaradiene	tr		0.02	Yes
Karahanaenone	tr		0.15	Yes
Germacrene D	0.5	3.0	0.2	No
α-Cedrol	0.8	7.0	1.2	Yes
α-Terpinyl acetate	1	4	2	Yes
Terpinen-4-ol	0.2	2.0	1.0	Yes
Limonene	1.8	5.0	1.9	Yes
Δ3-Carene	12	25	21	Yes
Myrcene	1.0	3.5	1.8	Yes
β-Pinene	0.5	3.0	0.9	Yes
α-Pinene	40	65	56	Yes
Refractive index	1.4680	1.4780	1.4712	Yes

CONCLUSION

No adulterant, contaminant or diluent has been detected using this method.

ANALYSIS SUMMARY – CONSOLIDATED CONTENTS

New readers of similar reports are encouraged to read table footnotes at least once.

Identification	%	Class
Toluene	0.01	Simple phenolic
Unknown	tr	Alkene
Cyclofenchene	0.01	Monoterpene
Bornylene	0.04	Monoterpene
Tricyclene	0.19	Monoterpene
α -Thujene	0.38	Monoterpene
α -Pinene	55.77	Monoterpene
α -Fenchene	0.50	Monoterpene
Camphene	0.25	Monoterpene
Thuja-2,4(10)-diene	0.03	Monoterpene
β -Pinene	0.87	Monoterpene
Sabinene	0.59	Monoterpene
Pseudolimonene isomer	0.01	Monoterpene
Myrcene	1.77	Monoterpene
2-Carene	0.04	Monoterpene
α -Phellandrene	0.14	Monoterpene
Pseudolimonene	0.03	Monoterpene
Menthatriene isomer I	0.01	Monoterpene
Δ 3-Carene	21.44	Monoterpene
α -Terpinene	0.31	Monoterpene
1,4-Cineole	0.04	Monoterpenic ether
ortho-Cymene	0.04	Monoterpene
para-Cymene	0.29	Monoterpene
Sylvestrene	0.12	Monoterpene
Limonene	1.91	Monoterpene
β -Phellandrene	0.52	Monoterpene
1,8-Cineole	0.05	Monoterpenic ether
(Z)- β -Ocimene	0.01	Monoterpene
(E)- β -Ocimene	0.03	Monoterpene
Unknown	0.03	Monoterpene
γ -Terpinene	0.46	Monoterpene
cis-Sabinene hydrate	0.01	Monoterpenic alcohol
Unknown	0.01	Oxygenated monoterpene
cis-Linalool oxide (fur.)	0.01	Monoterpenic alcohol
meta-Cymenene	0.01	Monoterpene
Terpinolene isomer	0.04	Monoterpene
Isoterpinolene	0.07	Monoterpene
Terpinolene	2.98	Monoterpene
para-Cymenene	0.09	Monoterpene
α -Pinene oxide	0.04	Monoterpenic ether
Unknown	0.02	Unknown
Linalool	0.29	Monoterpenic alcohol
endo-Fenchol	0.03	Monoterpenic alcohol
cis-para-Menth-2-en-1-ol	0.01	Monoterpenic alcohol
4-Hydroxy-4-methylcyclohex-2-enone	0.02	Aliphatic alcohol

<i>trans</i> -Pinocarveol	0.04	Monoterpenic alcohol
Camphor	0.11	Monoterpenic ketone
Camphene hydrate	0.03	Monoterpenic alcohol
Epoxyterpinolene	0.06	Monoterpenic ether
meta-Mentha-4,6-dien-8-ol	0.02	Monoterpenic alcohol
Karahanaenone	0.15	Monoterpenic ketone
Borneol	0.04	Monoterpenic alcohol
α -Phellandren-8-ol	0.01	Monoterpenic alcohol
Umbellulone	0.08	Monoterpenic ketone
Terpinen-4-ol	1.01	Monoterpenic alcohol
para-Cymen-8-ol	0.06	Monoterpenic alcohol
Unknown	0.03	Oxygenated monoterpene
α -Terpineol	0.27	Monoterpenic alcohol
Myrtenol	0.02	Monoterpenic alcohol
Verbenone	0.08	Monoterpenic ketone
<i>trans</i> -Carveol	0.02	Monoterpenic alcohol
Unknown	0.05	Oxygenated monoterpene
Linalyl acetate	0.02	Monoterpenic ester
<i>trans</i> -Ascaridole glycol	0.02	Monoterpenic alcohol
Unknown	0.02	Oxygenated monoterpene
Bornyl acetate	0.09	Monoterpenic ester
Unknown	0.01	Monoterpenic ester
Thymol	0.01	Monoterpenic alcohol
Terpinen-4-yl acetate	0.04	Monoterpenic ester
Unknown	0.01	Oxygenated monoterpene
Unknown	0.03	Unknown
Unknown	0.19	Monoterpenic ester
α -Terpinyl acetate	2.09	Monoterpenic ester
α -Cubebene	0.01	Sesquiterpene
α -Ylangene	0.02	Sesquiterpene
α -Copaene	0.05	Sesquiterpene
β -Bourbonene	0.02	Sesquiterpene
β -Cubebene	0.02	Sesquiterpene
β -Elemene	0.05	Sesquiterpene
α -Cedrene	0.17	Sesquiterpene
Sesquithujene	0.21	Sesquiterpene
β -Caryophyllene	0.29	Sesquiterpene
β -Cedrene	0.15	Sesquiterpene
β -Copaene	0.02	Sesquiterpene
<i>cis</i> -Thujopsene	0.06	Sesquiterpene
<i>cis</i> -Muurolo-3,5-diene	0.04	Sesquiterpene
<i>trans</i> -Muurolo-3,5-diene	0.01	Sesquiterpene
α -Humulene	0.17	Sesquiterpene
<i>cis</i> -Muurolo-4(15),5-diene	0.13	Sesquiterpene
<i>cis</i> -Cadina-1(6),4-diene	0.03	Sesquiterpene
Unknown	0.02	Sesquiterpene
<i>trans</i> -Cadina-1(6),4-diene	0.03	Sesquiterpene
γ -Muurolole	0.15	Sesquiterpene
Germacrene D	0.24	Sesquiterpene
α -Amorphene	0.26	Sesquiterpene
<i>trans</i> -Muurolo-4(15),5-diene	0.02	Sesquiterpene
β -Alaskene	0.07	Sesquiterpene

Epizonarene	0.07	Sesquiterpene
α-Muurolene	0.10	Sesquiterpene
δ-Amorphene	0.02	Sesquiterpene
γ-Cadinene	0.09	Sesquiterpene
α-Alaskene	0.06	Sesquiterpene
δ-Cadinene	0.30	Sesquiterpene
<i>trans</i> -Calamenene	0.01	Sesquiterpene
<i>trans</i> -Cadina-1,4-diene	0.02	Sesquiterpene
α-Cadinene	0.02	Sesquiterpene
α-Calacorene	0.03	Sesquiterpene
Salviadienol?	0.08	Sesquiterpenic alcohol
Caryophyllene oxide	0.04	Sesquiterpenic ether
allo-Cedrol	0.03	Sesquiterpenic alcohol
α-Cedrol	1.15	Sesquiterpenic alcohol
Widdrol	0.01	Sesquiterpenic alcohol
Torilenol	0.02	Oxygenated sesquiterpene
α-Acorenol	0.01	Sesquiterpenic alcohol
Unknown	0.05	Unknown
τ-Cadinol	0.03	Sesquiterpenic alcohol
α-Cadinol	0.03	Sesquiterpenic alcohol
Unknown	0.03	Unknown
Eudesma-4(15),7-dien-1β-ol	0.01	Sesquiterpenic alcohol
Phenylethyl octanoate	0.01	Phenolic ester
Manoyl oxide	0.12	Diterpenic ether
7,13-Abietadiene	0.01	Diterpene
Unknown	0.01	Unknown
Isopimaradiene	0.02	Diterpene
Consolidated total	98.71%	

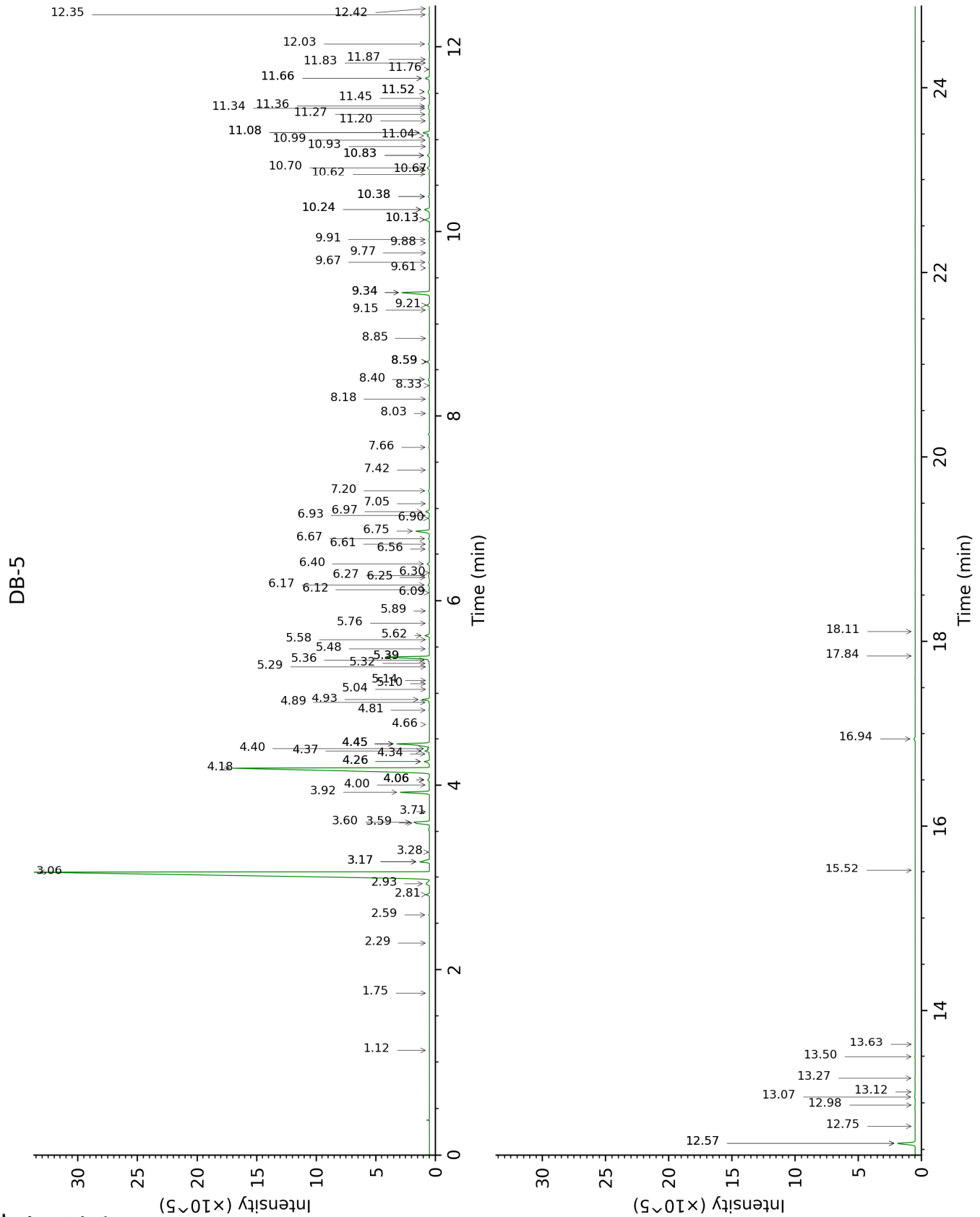
tr: The compound has been detected below 0.005% of total signal.

Note: no correction factor was applied

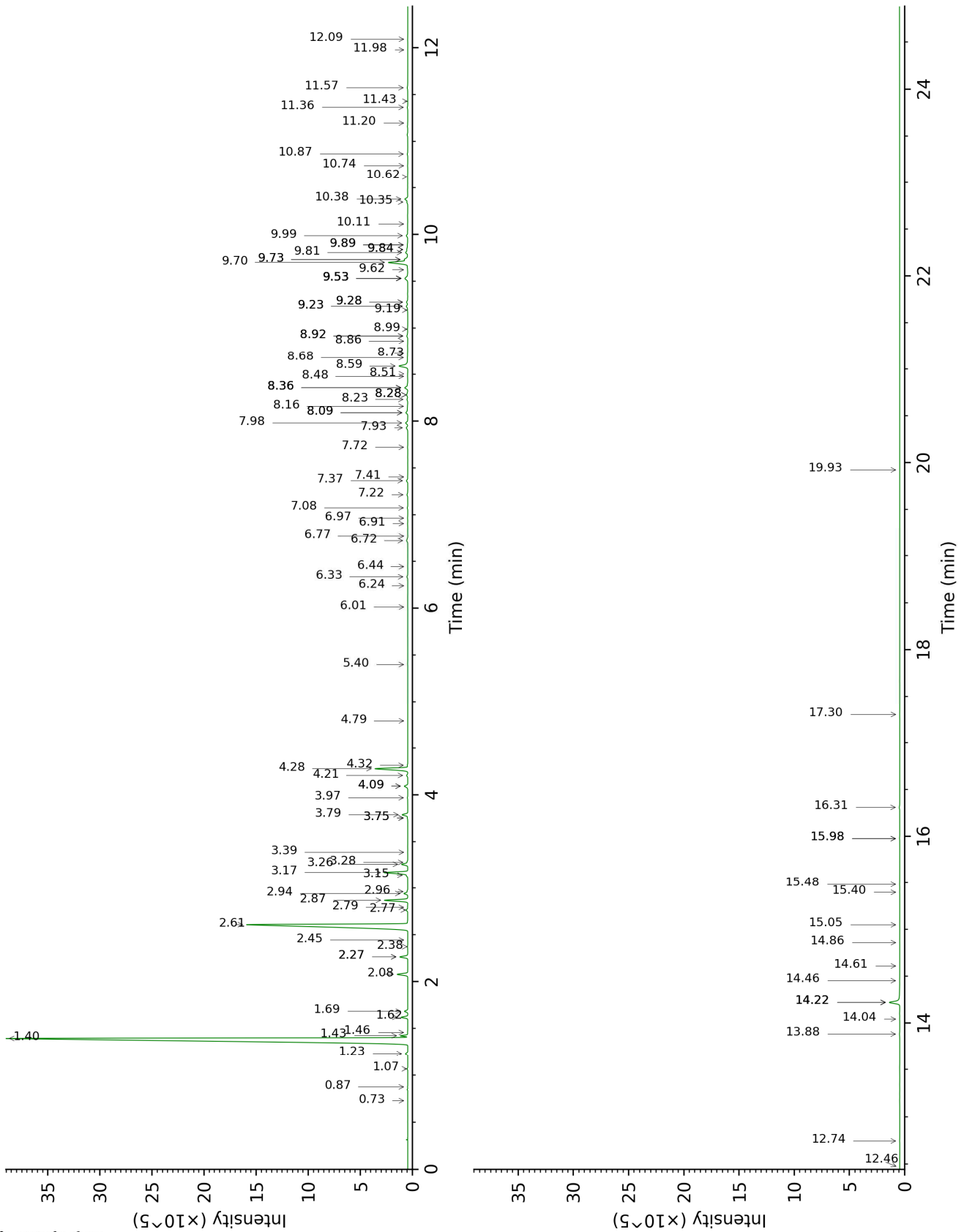
About "consolidated" data: The table above presents the breakdown of the sample volatile constituents after applying an algorithm to collapse data acquired from the multi-columns system of PhytoChemia into a single set of consolidated contents. In case of discrepancies between columns, the algorithm is set to prioritize data from the most standard DB-5 column, and smallest values so as to avoid overestimating individual content. This process is semi-automatic. Advanced users are invited to consult the "Full analysis data" table after the chromatograms in this report to access the full untreated data and perform their own calculations if needed.

Unknowns: Unknown compounds' mass spectral data is presented in the "Full analysis data" table. The occurrence of unknown compounds is to be expected in many samples, and does not denote particular problems unless noted otherwise in the conclusion.

This page was intentionally left blank. The following pages present the complete data of the analysis.



DB-WAX



FULL ANALYSIS DATA

Identification	Column DB-5			Column DB-WAX		
	R.T	R.I	%	R.T	R.I	%
Toluene	1.12	759	0.01	1.46	1002	0.01
Unknown [m/z 109, 67 (32), 81 (14), 41 (12), 124 (10)]	1.75	831	tr	0.73	876	tr
Cyclofenchene	2.29	877	0.01	0.87	910	0.01
Bornylene	2.59	903	0.04	1.07	942	0.04
Tricyclene	2.81	918	0.19	1.23	971	0.19
α -Thujene	2.93	926	0.38	1.43†	999	[56.87]
α -Pinene	3.06	934	55.77	1.40†	996	56.87
α -Fenchene	3.18*†	942	0.74	1.62	1019	0.50
Camphene	3.18*†	942	[0.74]	1.69	1025	0.25
Thuja-2,4(10)-diene	3.28	949	0.03	2.27*	1084	0.64
β -Pinene	3.59†	970	1.46	2.08	1065	0.87
Sabinene	3.60†	971	[1.46]	2.27*	1084	[0.64]
Pseudolimonene isomer	3.72	978	0.01	2.45	1100	0.01
Myrcene	3.92	993	1.77	2.87	1134	1.85
2-Carene	4.00	998	0.04	2.38	1095	0.02
α -Phellandrene	4.06*	1002	0.15	2.77	1126	0.14
Pseudolimonene	4.06*	1002	[0.15]	2.80	1128	0.03
Menthatriene isomer I	4.06*	1002	[0.15]	3.39	1175	0.01
Δ^3 -Carene	4.18	1010	21.44	2.61	1113	21.68
α -Terpinene	4.26*	1014	0.37	2.94	1140	0.31
1,4-Cineole	4.26*	1014	[0.37]	2.96	1141	0.04
ortho-Cymene	4.34	1019	0.04	4.10*	1228	0.32
para-Cymene	4.37	1022	0.29	4.10*	1228	[0.32]
Sylvestrene	4.40	1023	0.12	3.14†	1156	2.08
Limonene	4.45*	1026	2.47	3.17†	1158	[2.08]
β -Phellandrene	4.45*	1026	[2.47]	3.26	1165	0.52
1,8-Cineole	4.45*	1026	[2.47]	3.28	1166	0.05
(Z)- β -Ocimene	4.66	1040	0.01	3.76*†	1203	0.51
(E)- β -Ocimene	4.81	1049	0.03	3.97	1219	0.03
Unknown [m/z 93, 91 (54), 92 (31), 77 (29), 79 (17), 43 (13), 41 (10), 136 (9)]	4.90	1055	0.03	3.76*†	1203	[0.51]
γ -Terpinene	4.93	1057	0.46	3.79†	1206	[0.51]
cis-Sabinene hydrate	5.04	1064	0.01	6.91	1431	0.02
Unknown [m/z 79, 93 (60), 43 (40), 94 (35), 137 (33), 77 (26), 91 (20), 152 (18)]	5.10	1068	0.01	4.79	1279	0.01

<i>cis</i> -Linalool oxide (fur.)	5.14	1070	0.01	6.44	1396	0.02
meta-Cymenene	5.29	1080	0.01	6.24	1382	0.02
Terpinolene isomer	5.32	1082	0.04	4.32	1244	0.04
Isoterpinolene	5.36	1084	0.07	4.21	1236	0.10
Terpinolene	5.39*	1086	3.04	4.28	1242	2.98
para-Cymenene	5.39*	1086	[3.04]	6.34	1389	0.09
α -Pinene oxide	5.48	1092	0.04	5.40	1321	0.02
Unknown [m/z 109, 43 (65), 95 (54), 119 (50), 91 (47)... 149 (8)...]	5.58	1098	0.02	6.01	1365	0.01
Linalool	5.62	1101	0.29	7.98	1512	0.22
endo-Fenchol	5.76	1110	0.03	8.36*	1541	0.37
<i>cis</i> -para-Menth-2-en-1-ol	5.89	1118	0.01	8.09*	1520	0.26
4-Hydroxy-4-methylcyclohex-2-enone	6.09	1131	0.02	14.04	2028	0.01
<i>trans</i> -Pinocarveol	6.12	1133	0.04	9.19	1606	0.03
Camphor	6.17	1136	0.11	7.22	1454	0.09
Camphene hydrate	6.25	1141	0.03	8.48	1550	0.03
Epoxyterpinolene	6.27	1143	0.06	6.72	1417	0.15
meta-Mentha-4,6-dien-8-ol	6.30	1145	0.02	9.28*	1613	0.15
Karahanaenone	6.40	1151	0.15	7.37	1465	0.13
Borneol	6.56	1161	0.04	9.73*†	1649	[2.40]
α -Phellandren-8-ol	6.61	1165	0.01	10.11	1680	0.02
Umbellulone	6.67	1168	0.08	8.92*	1584	0.13
Terpinen-4-ol	6.75	1174	1.01	8.59	1558	1.01
para-Cymen-8-ol	6.90	1183	0.06	11.57	1803	0.08
Unknown [m/z 93, 59 (85), 81 (36), 92 (35), 43 (34), 121 (20), 136 (16)...]	6.93	1185	0.03			
α -Terpineol	6.97	1188	0.27	9.73*†	1649	[2.40]
Myrtenol	7.06	1193	0.02	10.87	1743	0.05
Verbenone	7.20	1202	0.08	9.62	1640	0.02
<i>trans</i> -Carveol	7.42	1218	0.02	11.43	1790	0.01
Unknown [m/z 137, 152 (28), 43 (25), 91 (24), 109 (23), 119 (19)]	7.66	1234	0.05	11.36	1785	0.05
Linalyl acetate	8.03	1259	0.02	8.16	1525	0.04
<i>trans</i> -Ascaridole glycol	8.18	1270	0.02	14.22*	2045	1.20
Unknown [m/z 95, 67 (45), 41	8.33	1280	0.02	12.46	1881	0.01

(42), 110 (42), 43 (41), 59 (36)]						
Bornyl acetate	8.40	1284	0.09	8.23	1531	0.09
Unknown [m/z 121, 93 (97), 43 (81), 136 (48), 107 (47), 108 (44)...]	8.59*	1297	0.17	8.51	1552	0.01
Thymol	8.59*	1297	[0.17]	15.05	2126	0.01
Terpinen-4-yl acetate	8.59*	1297	[0.17]	8.73	1569	0.04
Unknown [m/z 150, 107 (98), 91 (79), 108 (61)]	8.85	1312	0.01	11.98	1839	0.01
Unknown [m/z 93, 92 (34), 43 (31), 91 (27)...]	9.15	1334	0.03			
Unknown [m/z 93, 43 (50), 121 (50), 136 (35)...]	9.21	1337	0.19	9.53*	1633	0.41
α -Terpinyl acetate	9.34*	1347	2.11	9.70†	1647	2.40
α -Cubebene	9.34*	1347	[2.11]	6.77	1421	0.01
α -Ylangene	9.61	1366	0.02	6.97	1436	0.02
α -Copaene	9.67	1370	0.05	7.08	1444	0.04
β -Bourbonene	9.77	1378	0.02	7.41	1468	0.02
β -Cubebene	9.88	1385	0.02	7.72	1492	0.02
β -Elemene	9.92	1388	0.05	8.36*	1541	[0.37]
α -Cedrene	10.13*	1403	0.37	7.93	1508	0.17
Sesquithujene	10.13*	1403	[0.37]	8.09*	1520	[0.26]
β -Caryophyllene	10.24*	1411	0.43	8.36*	1541	[0.37]
β -Cedrene	10.24*	1411	[0.43]	8.28*	1535	0.16
β -Copaene	10.38*	1422	0.08	8.28*	1535	[0.16]
<i>cis</i> -Thujopsene	10.38*	1422	[0.08]	8.68	1566	0.06
<i>cis</i> -Muurolo-3,5-diene	10.62	1440	0.04	8.92*	1584	[0.13]
<i>trans</i> -Muurolo-3,5-diene	10.67	1443	0.01	8.86	1580	0.01
α -Humulene	10.70	1445	0.17	9.24*	1609	0.16
<i>cis</i> -Muurolo-4(15),5-diene	10.83*	1455	0.17	9.28*	1613	[0.15]
<i>cis</i> -Cadina-1(6),4-diene	10.83*	1455	[0.17]	8.99	1589	0.03
Unknown [m/z 161, 91 (57), 120 (46), 105 (42), 133 (25), 119 (22), 41 (21), 204 (21)]	10.93	1463	0.02	9.53*	1633	[0.41]
<i>trans</i> -Cadina-1(6),4-diene	11.00	1468	0.03	9.24*	1609	[0.16]
γ -Muurolole	11.04	1471	0.15	9.53*	1633	[0.41]
Germacrene D	11.08*	1474	0.50	9.81	1655	0.24
α -Amorphene	11.08*	1474	[0.50]	9.53*	1633	[0.41]

<i>trans</i> -Muurolo-4(15),5-diene	11.20	1483	0.02	9.84*	1658	0.13
β -Alaskene	11.27	1489	0.07	9.53*	1633	[0.41]
Epizonarene	11.34	1494	0.07	9.84*	1658	[0.13]
α -Muurolole	11.36	1495	0.10	9.99	1670	0.16
δ -Amorphene	11.45	1502	0.02	9.89*	1662	0.08
γ -Cadinene	11.52*	1507	0.17	10.35	1699	0.09
α -Alaskene	11.52*	1507	[0.17]	9.89*	1662	[0.08]
δ -Cadinene	11.66*	1518	0.33	10.38	1702	0.30
<i>trans</i> -Calamenene	11.66*	1518	[0.33]	11.20	1771	0.01
<i>trans</i> -Cadina-1,4-diene	11.76	1526	0.02	10.62	1722	0.02
α -Cadinene	11.83	1532	0.02	10.74	1732	0.02
α -Calacorene	11.87	1535	0.03	12.09	1849	0.02
Salviadienol?	12.03	1548	0.08			
Caryophyllene oxide	12.35	1573	0.04	12.74	1907	0.02
allo-Cedrol	12.42	1578	0.03	14.22*	2045	[1.20]
α -Cedrol	12.57*	1590	1.27	14.22*	2045	[1.20]
Widdrol	12.57*	1590	[1.27]	14.61	2082	0.01
Torilenol	12.75	1604	0.02	15.40	2160	0.01
α -Acorenol	12.98	1623	0.01	14.46	2067	0.01
Unknown [m/z 43, 93 (89), 91 (88), 79 (87), 123 (76), 81 (75)...]	13.07	1630	0.05	13.88	2013	0.03
τ -Cadinol	13.12	1635	0.03	14.86	2107	0.01
α -Cadinol	13.27	1647	0.03	15.48	2169	0.02
Unknown [m/z 85, 57 (59), 79 (26), 67 (18), 41 (16), 80 (15), 81 (10), 77 (8), 238 (7)]	13.50	1666	0.03			
Eudesma-4(15),7-dien-1 β -ol	13.63	1677	0.01	15.98*	2219	0.03
Phenylethyl octanoate	15.52	1842	0.01			
Manoyl oxide	16.94	1975	0.12	16.31	2253	0.06
7,13-Abietadiene	17.84	2064	0.01	17.30	2358	0.01
Unknown [m/z 191, 81 (47), 95 (41), 69 (39), 109 (32), 93 (32)...]	18.11	2091	0.01	19.92	2656	0.01
Isopimaradiene				15.98*	2219	[0.03]
Total identified		98.42%			99.14%	
Total reported		98.92%			99.28%	

*: Two or more compounds are coeluting on this column

[xx]: Duplicate percentage due to coelutions, not taken into account in the consolidated total

†: Peaks apexes were resolved, but peaks overlapped and were summed for analysis

tr: The compound has been detected below 0.005% of total signal.

Note: no correction factor was applied
R.T.: Retention time (minutes)
R.I.: Retention index