

GC/MS BATCH NUMBER: CL0101

ESSENTIAL OIL: CYPRESS

BOTANICAL NAME: CUPRESSUS SEMPERVIRENS

ORIGIN: SPAIN

KEY CONSTITUENTS PRESENT IN THIS BATCH OF CYPRESS OIL	%
α -PINENE	50.0
Δ -3-CARENE	24.7
TERPINOLENE	3.4
LIMONENE	3.3
MYRCENE	2.9
α -TERPINYL ACETATE	2.2
TERPINEN-4-OL	1.4
β -PINENE	1.4
γ -TERPIINENE	1.1
GERMACRENE D	0.2

Comments from Robert Tisserand: It smells really good. All the key constituents conform to the ISO standard for cypress oil except for germacrene D, which should be over 0.5%, but this does not concern me as it is common in cypress oils.

Sample Information

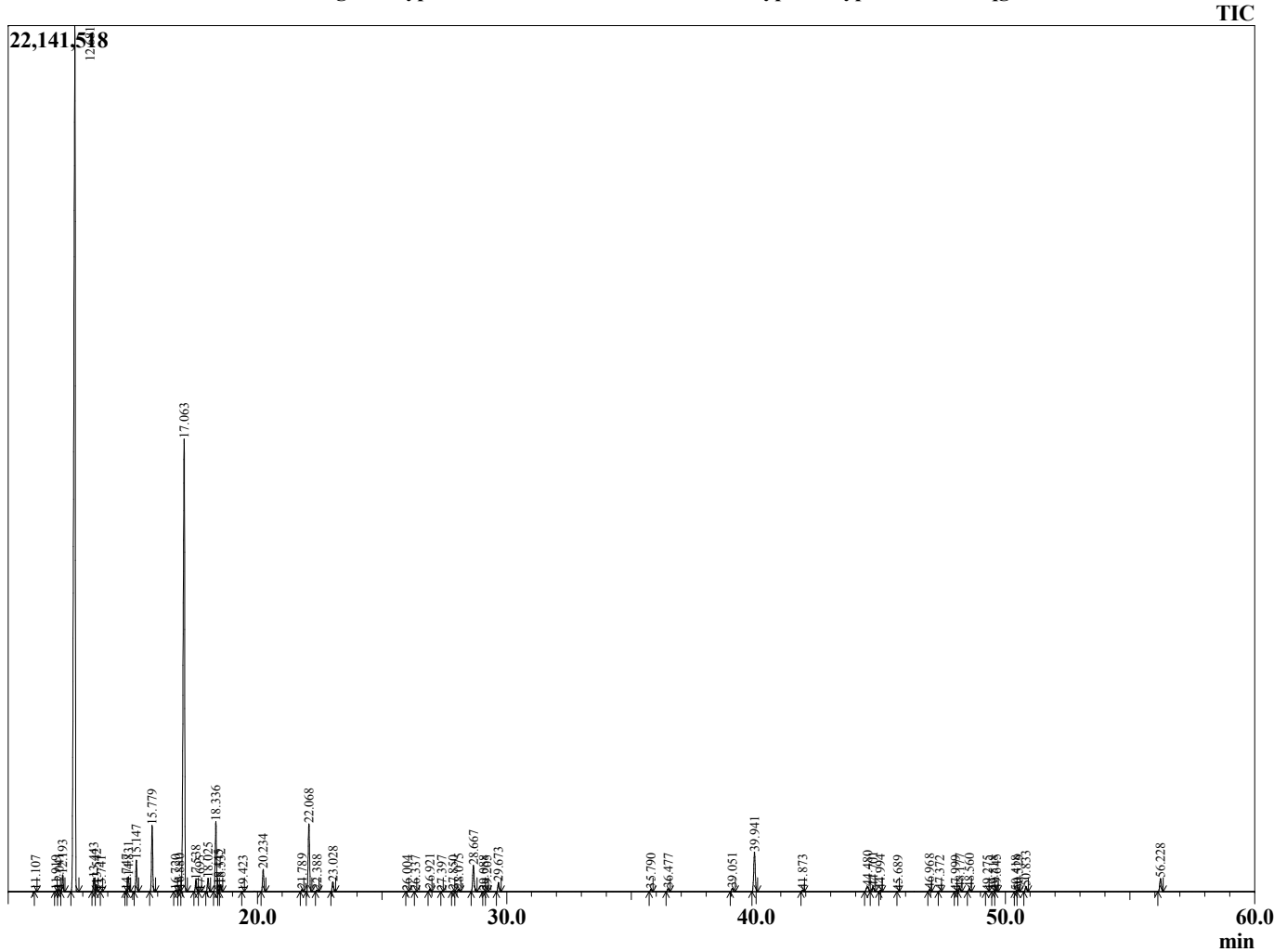
Analyzed by : Dr. Robert S. Pappas
Analyzed : 1/14/2015 6:49:08 AM
Sample Type : Essential Oil
Sample Name : Cypress
Sample ID : 97937-2
Injection Volume : 0.10
Data File : C:\GCMSsolution\Data\EOU\Cypress\Cypress 97937-2.qgd



Peak Report TIC

Table with 3 columns: R.Time, Name, and Area%. Lists various chemical compounds such as Bornylene, Pinene isomer, Tricyclene, Thujene, Pinene, Fenchene, Camphene, Thuja-2,4(10)diene, Cyclopentene, Sabinene, Pinene, Myrcene, Pseudolimonene, Phellandrene, 3-Carene, Terpinene, Cymene, Cymene, Limonene, Phellandrene, 1,8-cineole, Ocimene, Terpinene, Terpinolene, Terpinolene, Cymenene, Linalool, Menth-2-en-1-ol, Camphor, Karahanaenone, Mentha-1,5-dien-8-ol, Thuj-3-en-2-one, Borneol, Terpinen-4-ol, p-Cymen-8-ol, Ocimenol, Terpineol, Bornyl acetate, Thujanol acetate, Terpinyl acetate, Copaene, Cedrene, Caryophyllene, Cedrene, Guaine, Humulene, Cadina-1(6),4-diene, Muurolo-4(14),5-diene, Cadina-1(6),4-diene, Germacrene D, Valencene, Muurolo-4(14),5-diene, Muurolo-4(14),5-diene, Alaskene, Amorphene, Cadinene, Cedrol, and Ucyppress blue.

Chromatogram Cypress C:\GCMSsolution\Data\EOU\Cypress\Cypress 97937-2.qgd



Comments:

Typical Ranges of Main Components:

100.00