

**Date :** March 4, 2021

**CERTIFICATE OF ANALYSIS – GC PROFILING**

*SAMPLE IDENTIFICATION*

**Internal code :** 20117-PTH01

**Customer identification :** Copaiba - CJ0108206R

**Type :** Resin

**Source :** *Copaifera officinalis*

**Customer :** Plant Therapy

*ANALYSIS*

**Method:** PC-MAT-014  - Analysis of the composition of an essential oil or other volatile liquid by FAST GC-FID (in French); identifications validated by GC-MS.

**Analyst :** Sylvain Mercier, M. Sc., Chimiste

**Analysis date :** September 17, 2020

Checked and approved by :

---

Alexis St-Gelais, M. Sc., chimiste 2013-174

*This report was updated from the first version issued on September 17, 2020, to correct the customer identification.*

*Notes: This report may not be published, including online, without the written consent from Laboratoire PhytoChemia. This report is digitally signed, it is only considered valid if the digital signature is intact. The results only describe the samples that were submitted to the assays.*

*PHYSICOCHEMICAL DATA*

**Physical aspect:** Light yellow viscous liquid

**Refractive index:**  $1.5078 \pm 0.0003$  (20 °C; method PC-MAT-016)

*CONCLUSION*

No adulterant, contaminant or diluent has been detected using this method.

## ANALYSIS SUMMARY – CONSOLIDATED CONTENTS

New readers of similar reports are encouraged to read table footnotes at least once.

Identification	%	Class
(2E,4E)-3,7-Dimethylocta-2,4-diene?	0.03	Monoterpene
(Z)- $\beta$ -Ocimene	0.12	Monoterpene
(E)- $\beta$ -Ocimene	0.01	Monoterpene
allo-Ocimene	0.02	Monoterpene
$\delta$ -Elemene	0.29	Sesquiterpene
$\delta$ -Elemene isomer	0.03	Sesquiterpene
$\alpha$ -Cubebene	0.53	Sesquiterpene
Cyclosativene I	0.08	Sesquiterpene
Cyclosativene II	0.04	Sesquiterpene
$\alpha$ -Ylangene	0.10	Sesquiterpene
$\alpha$ -Copaene	3.69	Sesquiterpene
<i>cis</i> - $\beta$ -Elemene	0.04	Sesquiterpene
$\beta$ -Cubebene	0.50	Sesquiterpene
$\beta$ -Elemene	1.17	Sesquiterpene
Cyperene	0.26	Sesquiterpene
$\alpha$ -Gurjunene	0.04	Sesquiterpene
$\alpha$ -Cedrene	0.01	Sesquiterpene
Sesquithujene	0.02	Sesquiterpene
$\beta$ -Ylangene	0.08	Sesquiterpene
$\beta$ -Caryophyllene	35.65	Sesquiterpene
$\beta$ -Copaene	0.18	Sesquiterpene
$\gamma$ -Elemene	0.38	Sesquiterpene
Aromadendrene	0.11	Sesquiterpene
<i>trans</i> - $\alpha$ -Bergamotene	4.01	Sesquiterpene
$\beta$ -Humulene	0.08	Sesquiterpene
Sesquisabinene A	0.30	Sesquiterpene
$\alpha$ -Humulene	4.90	Sesquiterpene
allo-Aromadendrene	0.38	Sesquiterpene
<i>cis</i> -Muurolo-4(15),5-diene	0.09	Sesquiterpene
(E)- $\beta$ -Farnesene	0.27	Sesquiterpene
<i>trans</i> -Cadina-1(6),4-diene	0.22	Sesquiterpene
Germacrene D	9.75	Sesquiterpene
$\gamma$ -Muurolole	1.03	Sesquiterpene
$\beta$ -Selinene	0.63	Sesquiterpene
$\alpha$ -Curcumene	0.15	Sesquiterpene
$\delta$ -Selinene	0.12	Sesquiterpene
$\alpha$ -Selinene	0.61	Sesquiterpene
epi-Cubebol	0.06	Sesquiterpenic alcohol
Bicyclogermacrene	0.67	Sesquiterpene
Viridiflorene	0.10	Sesquiterpene
Caparratriene	0.11	Sesquiterpene
$\alpha$ -Muurolole	0.59	Sesquiterpene
$\delta$ -Guaiene	0.36	Sesquiterpene
$\beta$ -Bisabolene	2.40	Sesquiterpene
Cubebol	0.09	Sesquiterpenic alcohol

β-Curcumene	0.03	Sesquiterpene
γ-Cadinene	0.28	Sesquiterpene
(3E,6E)-α-Farnesene	0.28	Sesquiterpene
δ-Cadinene	2.46	Sesquiterpene
Zonarene	0.55	Sesquiterpene
trans-Calamenene	0.09	Sesquiterpene
β-Sesquiphellandrene	0.01	Sesquiterpene
trans-Cadina-1,4-diene	0.28	Sesquiterpene
α-Cadinene	0.18	Sesquiterpene
α-Calacorene	0.08	Sesquiterpene
(E)-α-Bisabolene	0.27	Sesquiterpene
Isocaryophyllene epoxide B	0.02	Sesquiterpenic ether
Germacrene B	2.20	Sesquiterpene
Maaliol	0.10	Sesquiterpenic alcohol
β-Calacorene	0.04	Sesquiterpene
Caryophyllenyl alcohol	0.13	Sesquiterpenic alcohol
Germacrene D-4-ol	0.03	Sesquiterpenic alcohol
Spathulenol	0.04	Sesquiterpenic alcohol
Caryophyllene oxide	0.14	Sesquiterpenic ether
Globulol	0.10	Sesquiterpenic alcohol
Viridiflorol	0.11	Sesquiterpenic alcohol
Ledol	0.13	Sesquiterpenic alcohol
Junenol	0.69	Sesquiterpenic alcohol
Unknown	0.11	Oxygenated sesquiterpene
Rosifoliol	0.04	Sesquiterpenic alcohol
1-epi-Cubenol	0.15	Sesquiterpenic alcohol
Caryophylladienol II	0.04	Sesquiterpenic alcohol
τ-Cadinol	0.26	Sesquiterpenic alcohol
τ-Muurolol	0.40	Sesquiterpenic alcohol
α-Muurolol	0.07	Sesquiterpenic alcohol
Unknown	0.41	Sesquiterpenic alcohol
α-Cadinol	0.58	Sesquiterpenic alcohol
Selin-11-en-4α-ol	0.04	Sesquiterpenic alcohol
(3Z)-Caryophylla-3,8(13)-dien-5β-ol	0.02	Sesquiterpenic alcohol
Cadalene	0.05	Sesquiterpene
α-Bisabolol	0.05	Sesquiterpenic alcohol
Juniper camphor	0.23	Sesquiterpenic alcohol
Aromadendrane-4,10-diol	0.01	Sesquiterpenic alcohol
Methyl (E,E)-farnesate?	0.01	Sesquiterpenic ester
Unknown	0.04	Oxygenated diterpene
Unknown	0.12	Diterpene
Unknown	0.05	Oxygenated diterpene
Unknown	0.14	Oxygenated diterpene
Palmitic acid	0.16	Aliphatic acid
Unknown	0.02	Oxygenated diterpene
cis-3,14-Clerodadien-13-ol	0.12	Diterpenic alcohol
Unknown	0.05	Oxygenated diterpene
Manool	0.20	Diterpenic alcohol
Kolavelool	0.75	Diterpenic alcohol
Linoleic acid	0.05	Aliphatic acid
Oleic acid	0.04	Aliphatic acid
Stearic acid	0.05	Aliphatic acid

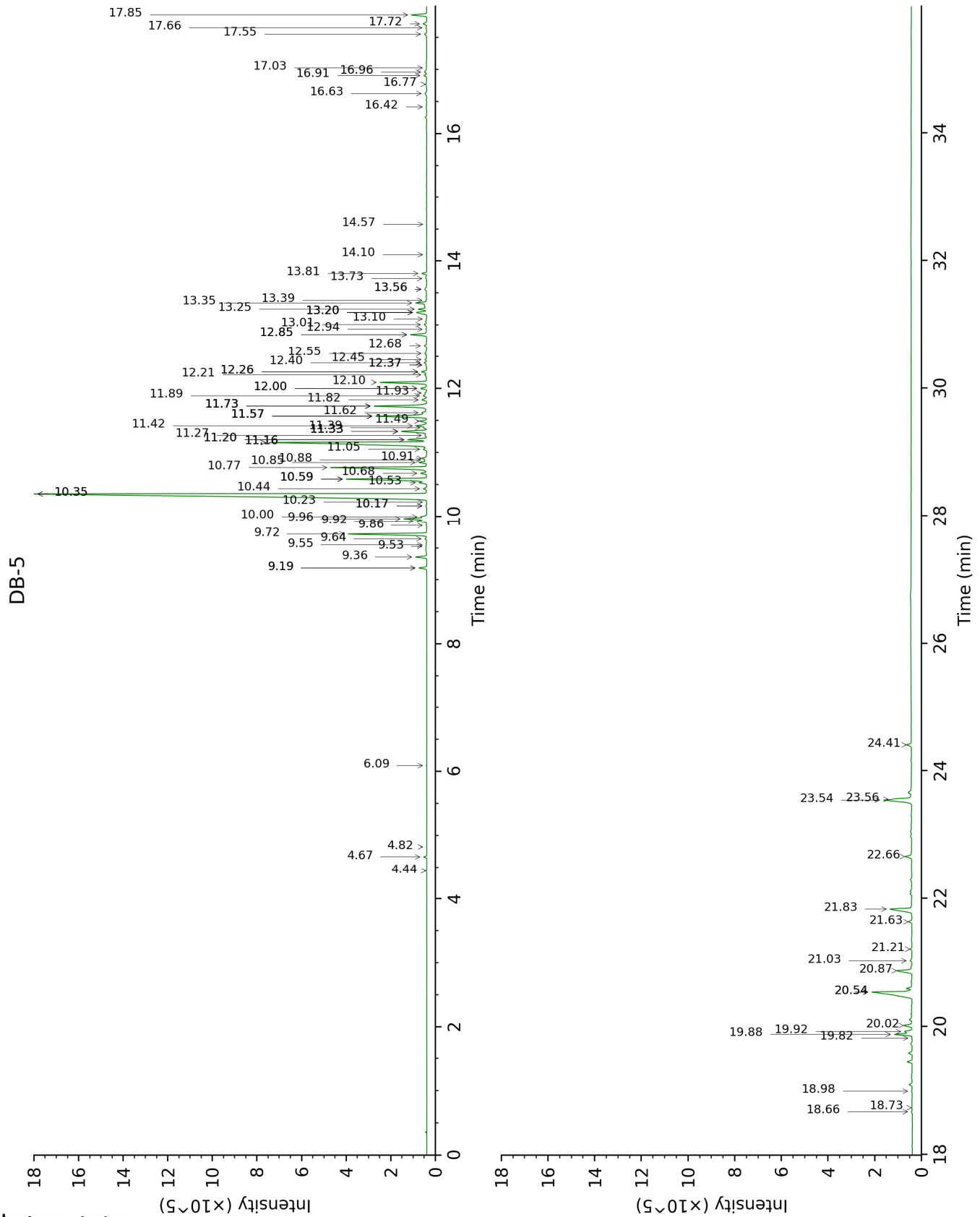
3 $\alpha$ -Hydroxymanool	0.01	Diterpenic alcohol
Copalol	0.93	Diterpenic alcohol
Kolavenol	0.47	Diterpenic alcohol
Methyl copalate?	0.55	Diterpenic ester
Copaifera diterpenic acid I	3.68	Diterpenic acid
Methyl kolavenate	0.47	Diterpenic ester
Copaifera diterpenic acid II	1.08	Diterpenic acid
Kolavenyl acetate?	0.14	Diterpenic ester
Methyl hardwickiiate?	0.09	Diterpenic ester
Copaifera diterpenic acid III	0.19	Diterpenic acid
Copaifera diterpenic acid IV	1.75	Diterpenic acid
Copaifera diterpenic acid V	0.42	Diterpenic acid
Copaifera diterpenic acid VI	1.74	Diterpenic acid
Copaifera diterpenic acid VII	0.65	Diterpenic acid
Copaifera diterpenic acid VIII	0.26	Diterpenic acid
<b>Consolidated total</b>	<b>95.23%</b>	

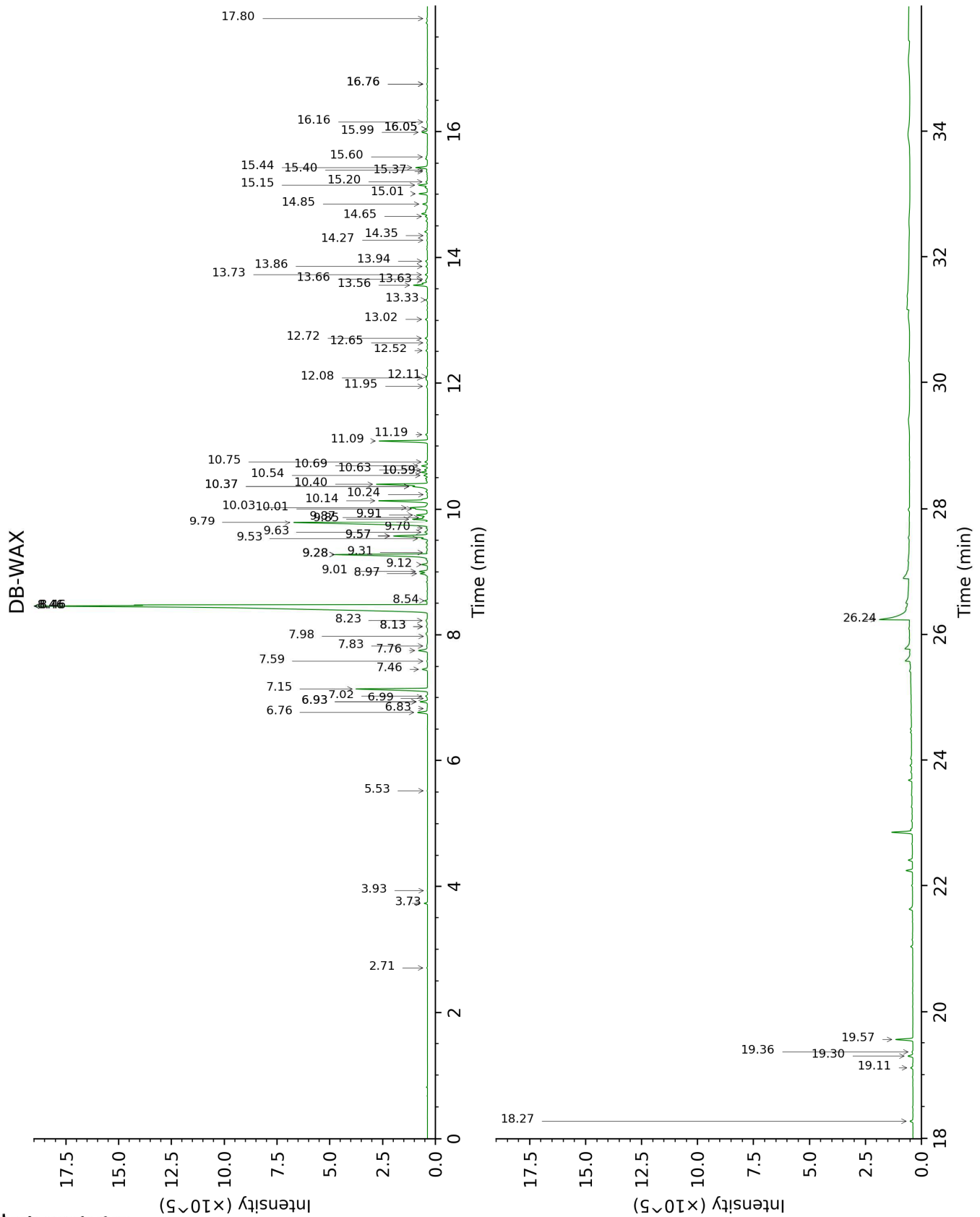
Note: no correction factor was applied

**About "consolidated" data:** The table above presents the breakdown of the sample volatile constituents after applying an algorithm to collapse data acquired from the multi-columns system of PhytoChemia into a single set of consolidated contents. In case of discrepancies between columns, the algorithm is set to prioritize data from the most standard DB-5 column, and smallest values so as to avoid overestimating individual content. This process is semi-automatic. Advanced users are invited to consult the "Full analysis data" table after the chromatograms in this report to access the full untreated data and perform their own calculations if needed.

**Unknowns:** Unknown compounds' mass spectral data is presented in the "Full analysis data" table. The occurrence of unknown compounds is to be expected in many samples, and does not denote particular problems unless noted otherwise in the conclusion.

This page was intentionally left blank. The following pages present the complete data of the analysis.







FULL ANALYSIS DATA

Identification	Column DB-5			Column DB-WAX		
	R.T	R.I	%	R.T	R.I	%
(2E,4E)-3,7-Dimethylocta-2,4-diene?	4.44	1025	0.03	2.71	1122	0.03
(Z)-β-Ocimene	4.67	1039	0.12	3.73	1201	0.13
(E)-β-Ocimene	4.82	1049	0.01	3.93	1216	0.01
allo-Ocimene	6.09	1129	0.02	5.52	1328	0.02
δ-Elemene	9.19*	1333	0.38	6.93*	1431	0.37
δ-Elemene isomer	9.19*	1333	[0.38]	6.83	1423	0.03
α-Cubebene	9.36	1345	0.53	6.76	1418	0.55
Cyclosativene I	9.52	1357	0.08	6.93*	1431	[0.37]
Cyclosativene II	9.55	1358	0.04	6.99	1435	0.02
α-Ylangene	9.64	1365	0.10	7.02	1438	0.11
α-Copaene	9.72	1370	3.69	7.15	1447	3.91
cis-β-Elemene	9.86	1380	0.04	8.23	1529	0.15
β-Cubebene	9.92	1385	0.50	7.76	1492	0.55
β-Elemene	9.96	1388	1.17	8.46*	1547	43.23
Cyperene	10.00	1390	0.26	7.46	1470	0.28
α-Gurjunene	10.17*	1402	0.06	7.59	1480	0.04
α-Cedrene	10.17*	1402	[0.06]	7.98	1510	0.01
Sesquithujene	10.23	1406	0.02	8.14*	1522	0.10
β-Ylangene	10.35*	1416	35.73	8.14*	1522	[0.10]
β-Caryophyllene	10.35*	1416	[35.73]	8.46*	1547	[43.23]
β-Copaene	10.44	1422	0.18	8.46*	1547	[43.23]
γ-Elemene	10.53	1429	0.38	9.01	1590	0.40
Aromadendrene	10.59*	1433	4.21	8.54	1554	0.11
trans-α-Bergamotene	10.59*	1433	[4.21]	8.46*	1547	[43.23]
β-Humulene	10.59*	1433	[4.21]	7.83	1498	0.08
Sesquisabinene A	10.68	1440	0.30	9.12	1598	0.28
α-Humulene	10.77	1447	4.90	9.28*	1611	5.26
allo-Aromadendrene	10.85	1452	0.38	8.97	1587	0.42
cis-Muurolo-4(15),5-diene	10.88	1455	0.09	9.31	1614	0.08
(E)-β-Farnesene	10.91	1457	0.27	9.53	1632	0.24
trans-Cadina-1(6),4-diene	11.05	1468	0.22	9.28*	1611	[5.26]
Germacrene D	11.16*	1476	10.79	9.79	1652	9.75
γ-Murololene	11.16*	1476	[10.79]	9.57*	1635	2.02
β-Selinene	11.20*	1479	0.99	9.85	1657	0.63
ar-Curcumene	11.20*	1479	[0.99]	10.63	1722	0.15
δ-Selinene	11.27	1484	0.12	9.63	1640	0.15
α-Selinene	11.33*	1489	1.44	9.91	1663	0.61
epi-Cubebol	11.33*	1489	[1.44]	11.95	1836	0.06
Bicyclgermacrene	11.33*	1489	[1.44]	10.03†	1672	[1.26]
Viridiflorene	11.33*	1489	[1.44]	9.57*	1635	[2.02]
Caparratriene	11.39	1493	0.11	9.70	1645	0.06
α-Murololene	11.42	1495	0.59	10.01†	1671	1.26

δ-Guaiene	11.49	1501	0.36	9.87	1660	0.22
β-Bisabolene	11.57*	1507	2.79	10.14	1681	2.40
Cubebol	11.57*	1507	[2.79]	12.52	1886	0.09
β-Curcumene	11.57*	1507	[2.79]	10.24	1689	0.03
γ-Cadinene	11.57*	1507	[2.79]	10.37*	1700	0.83
(3E,6E)-α-Farnesene	11.62	1511	0.28	10.54	1714	0.19
δ-Cadinene	11.73*	1519	2.82	10.40	1703	2.46
Zonarene	11.73*	1519	[2.82]	10.37*	1700	[0.83]
trans-Calamenene	11.73*	1519	[2.82]	11.19	1769	0.09
β-Sesquiphellandrene	11.73*	1519	[2.82]	10.59*	1719	0.29
trans-Cadina-1,4-diene	11.82	1527	0.28	10.59*	1719	[0.29]
α-Cadinene	11.89	1532	0.18	10.75	1733	0.13
α-Calacorene	11.93	1535	0.08	12.08	1848	0.09
(E)-α-Bisabolene	12.00*	1541	0.31	10.69	1727	0.27
Isocaryophyllene epoxide B	12.00*	1541	[0.31]	12.11	1850	0.02
Germacrene B	12.10	1548	2.20	11.08	1761	2.32
Maaliol	12.22	1558	0.10	13.02	1932	0.11
β-Calacorene	12.26*	1561	0.27	12.65	1898	0.04
Caryophyllenyl alcohol	12.26*	1561	[0.27]	13.63	1988	0.13
Germacrene D-4-ol	12.37*	1570	0.06	13.66	1991	0.03
Spathulenol	12.37*	1570	[0.06]	14.35	2057	0.04
Caryophyllene oxide	12.40	1572	0.14	12.72	1904	0.12
Globulol	12.45	1576	0.10	13.86	2010	0.07
Viridiflorol	12.55	1584	0.11	13.94	2018	0.09
Ledol	12.68	1594	0.13	13.33	1960	0.08
Junenol	12.85*	1608	0.82	13.56	1982	0.69
Unknown [m/z 179, 161 (66), 119 (44), 95 (38), 105 (35)... 204 (24), 222 (1)]	12.85*	1608	[0.82]	14.65	2086	0.11
Rosifoliol	12.94	1615	0.04	14.27	2050	0.04
1-epi-Cubenol	13.01	1621	0.15	13.73	1997	0.11
Caryophylladienol II	13.10	1628	0.04	16.05*	2226	0.04
τ-Cadinol	13.20*	1637	0.66	14.85	2105	0.26
τ-Muurolol	13.20*	1637	[0.66]	15.01	2121	0.40
α-Muurolol	13.20*	1637	[0.66]	15.20	2140	0.07
Unknown cadinol analog II [m/z 95, 121 (73), 43 (57), 79 (43), 161 (43), 109 (40)... 204 (35), 222 (2)]	13.25	1641	0.41	15.15	2135	0.41
α-Cadinol	13.35	1649	0.58	15.44	2164	0.59
Selin-11-en-4α-ol	13.39	1652	0.04	15.60	2180	0.08
(3Z)-Caryophylla-3,8(13)-dien-5β-ol	13.56*	1667	0.16	16.76*	2300	0.04
Cadalene	13.56*	1667	[0.16]	15.37	2157	0.05

α-Bisabolol	13.73	1680	0.05	15.40	2160	0.03
Juniper camphor	13.81	1687	0.23	15.99	2220	0.27
Aromadendrane-4,10-diol	14.10	1712	0.01	16.76*	2300	[0.04]
Methyl (E,E)-farnesate?	14.58	1753	0.01			
Unknown [m/z 43, 95 (66), 81 (63), 137 (61), 41 (53), 107 (47)... 262 (6)...]	16.42	1920	0.04	17.80	2412	0.04
Unknown [m/z 95, 105 (79), 107 (75), 189 (68), 41 (64), 81 (61)... 257 (12), 272 (2)]	16.63	1940	0.12	16.16	2237	0.05
Unknown [m/z 43, 95 (98), 107 (84), 93 (55), 121 (53)... 262 (7)...]	16.77	1954	0.05	18.27	2465	0.15
Unknown [m/z 95, 107 (61), 191 (46), 121 (45)...]	16.91	1967	0.14			
Palmitic acid	16.96	1972	0.16			
Unknown [m/z 95, 107 (27), 81 (19), 191 (17), 55 (16)... 275 (1)...]	17.03	1978	0.02	16.05*	2226	[0.04]
cis-3,14-Clerodadien-13-ol	17.55	2030	0.12	19.11	2560	0.12
Unknown [m/z 95, 191 (43), 71 (27), 55 (27)...]	17.66	2040	0.05	19.36	2589	0.05
Manool	17.72	2046	0.20	19.30	2581	0.26
Kolavelool	17.85	2060	0.75	19.57	2613	0.83
Linoleic acid	18.66	2143	0.05			
Oleic acid	18.73	2149	0.04			
Stearic acid	18.98	2176	0.05			
3α-Hydroxymanool	19.82	2266	0.01			
Copalol	19.88	2272	0.93			
Kolavenol	19.92	2277	0.47			
Methyl copalate?	20.02	2287	0.55			
Copaifera diterpenic acid I	20.54*	2346	4.14	26.24	3506	3.68
Methyl kolavenate	20.54*	2346	[4.14]			
Copaifera diterpenic acid II	20.87	2384	1.08			
Kolavenyl acetate?	21.03	2401	0.14			
Methyl hardwickiate?	21.21	2422	0.09			
Copaifera diterpenic acid III	21.63	2473	0.19			
Copaifera	21.83	2497	1.75			

diterpenic acid IV				
Copaifera diterpenic acid V	22.66	2598	0.42	
Copaifera diterpenic acid VI	23.54	2710	1.74	
Copaifera diterpenic acid VII	23.56	2712	0.65	
Copaifera diterpenic acid VIII	24.41	2824	0.26	
<b>Total identified</b>		<b>94.53%</b>		<b>88.78%</b>
<b>Total reported</b>		<b>95.34%</b>		<b>89.59%</b>

\*: Two or more compounds are coeluting on this column

[xx]: Duplicate percentage due to coelutions, not taken into account in the consolidated total

†: Peaks apexes were resolved, but peaks overlapped and were summed for analysis

Note: no correction factor was applied

R.T.: Retention time (minutes)

R.I.: Retention index