



# PLANT THERAPY

100% PURE ESSENTIAL OILS

## GC/MS BATCH NUMBER: CB0100

---

---

**ESSENTIAL OIL:** CINNAMON LEAF  
**BOTANICAL NAME:** CINNAMOMUM VERUM  
**ORIGIN:** SRI LANKA

KEY CONSTITUENTS PRESENT IN THIS BATCH OF CINNAMON LEAF OIL	%
EUGENOL	77.7
BENZYL BENZOATE	3.1
$\beta$ -CARYOPHYLLENE	3.0
EUGENYL ACETATE	2.3
LINALOOL	2.1
CINNAMYL ACETATE	1.6
(E)-CINNAMALDEHYDE	1.3
SAFROLE	1.0

Comments from Robert Tisserand: The composition is in line with a good quality cinnamon leaf oil, with a typical concentration of eugenol. The odor is characteristically spicy.

**CUSTOMER :**

**PLANT THERAPY**  
**126 Locust Street South**  
**Twin Falls, ID 83 301**  
**USA**

**Sample nature:** ESSENTIAL OIL  
**Botanical species:** CINNAMOMUM VERUM  
**Reference name:** CINNAMON  
**Batch number:** CB0100  
**Origin:** SRI LANKA  
**Part:** LEAF  
**Pyre<sup>o</sup>ssences reference:** E321  
**Date of reception:** 07/21/2015  
**Date analysis:** 07/24/2015  
**Packaging:** Amber flask of 4 ml – ambient temperature  
**Analysis:** Classic

**Validated report by :**

**Daniel DANTIN**



**GAS CHROMATOGRAPHY** norm NF ISO 11024

**Analysis conditions :**

CPG 6890 / MS 5973 – Column : VF WAX polar 60 m × 0,25 mm × 0,5 µm

CPG 6890 FID - Column : VF WAX polar 60 m × 0,25 mm × 0,5 µm

Temperature program : 6 mn to 60 °C –2 °C/mn→250 °C – 10 mn to 250 °C

Carrier gas He : 23 psis/MS – 30 psis/FID

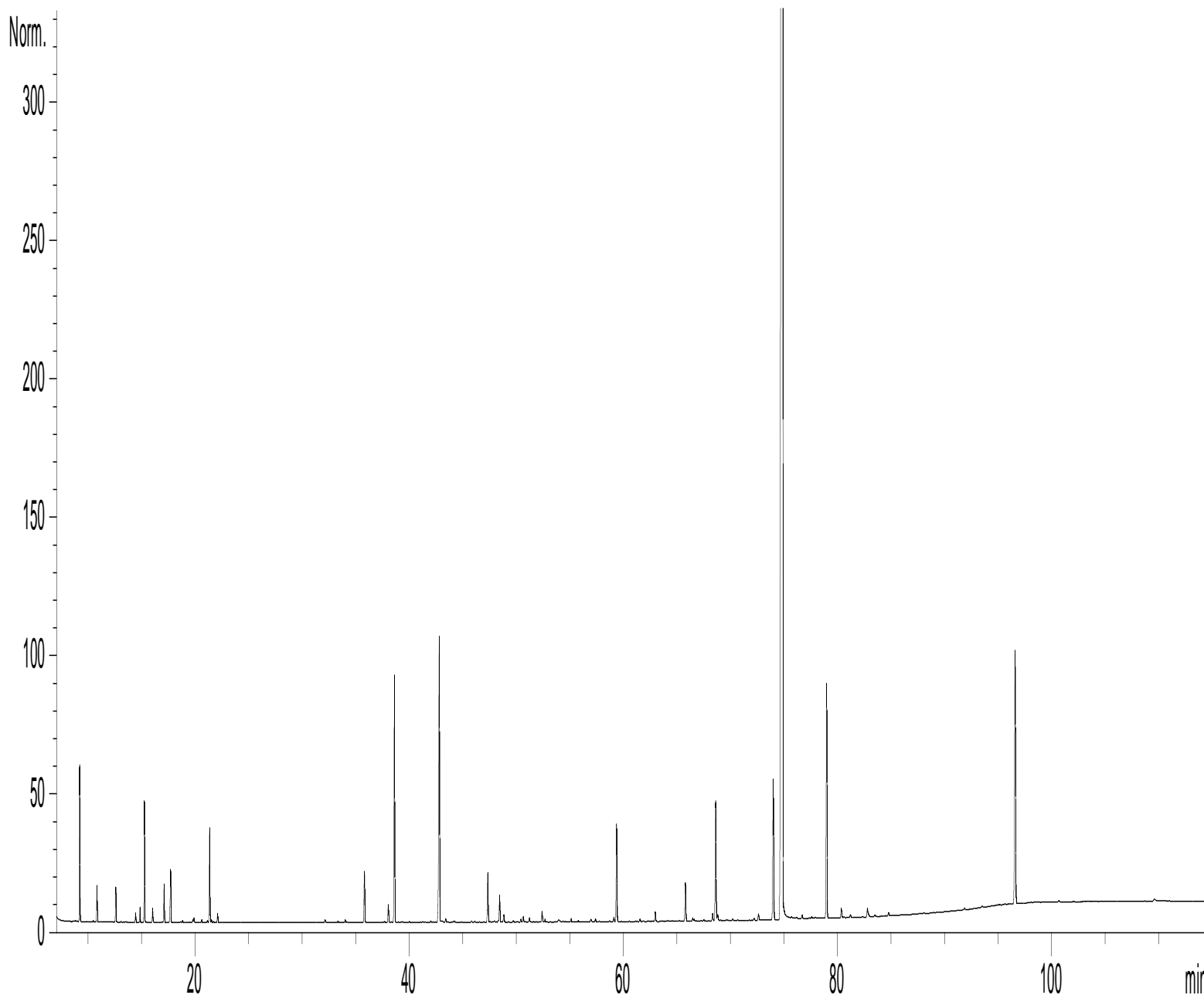
Sample injection / split : 1 µl of 10 % solution in Ethanol,

Mass range : 30 to 350, Oil components are identified by a combination of retention times (our own database) and mass spectra library NKS 75 000 records,

Percentages are calculated from GC/FID peaks areas without using corrections factors,

**Chromatographic profile (GC/FID)**

FID1 A, (Z:\PLANTHER\CV17E321.D)



**Identification results 1 : CINNAMON LEAF SRI LANKA BATCH CB0100**

Peak	RT (min)	Compound name	%	Norm (%)	Allergens (%)
1	9,2	$\alpha$ -PINENE	0,88		
2	9,3	$\alpha$ -THUYENE	0,10		
3	10,5	$\alpha$ -FENCHENE	0,01		
4	10,8	CAMPHENE	0,29		
5	12,6	$\beta$ -PINENE	0,28		
6	13,1	SABINENE	0,01		
7	14,4	$\Delta$ 3-CARENE	0,07		
8	14,9	$\beta$ -MYRCENE	0,11		
9	15,3	$\alpha$ -PHELLANDRENE	0,90		
10	16,0	$\alpha$ -TERPINENE	0,10		
11	17,1	LIMONENE	0,29		0,29
12	17,7	$\beta$ -PHELLANDRENE + 1,8-CINEOLE	0,51		
13	18,8	Cis- $\beta$ -OCIMENE	0,02		
14	19,8	$\gamma$ -TERPINENE	0,02		
15	19,9	Trans- $\beta$ -OCIMENE	0,04		
16	20,6	STYRENE	0,02		
17	21,1	m-CYMENE	0,01		
18	21,3	p-CYMENE	0,76		
19	21,5	ISOTERPINOLENE	0,02		
20	22,1	TERPINOLENE	0,07		
21	32,0	$\alpha$ ,p-DIMETHYLSTYRENE	0,01		
22	32,1	LINALOOL Cis-OXIDE	0,02		
23	33,3	$\alpha$ -CUBEBENE	0,01		
24	34,0	LINALOOL Trans-OXIDE	0,02		
25	35,8	$\alpha$ -COPAENE	0,49		
26	38,0	BENZALDEHYDE	0,17		
27	38,6	LINALOOL	2,12		2,12
28	40,0	Trans-p-MENTH-2-EN-1-OL	0,01		
29	42,0	$\beta$ -ELEMENE	0,01		
30	42,7	TERPINENE-4-OL	0,08		
31	42,8	<b><math>\beta</math>-CARYOPHYLLENE</b>	<b>2,95</b>		
32	43,4	AROMADENDRENE	0,03		
33	45,8	ALLO-AROMADENDRENE	0,02		
34	46,5	ZONARENE	0,01		
35	47,3	$\alpha$ -HUMULENE	0,48		
36	48,0	CARVOTANACETONE	0,02		
37	48,3	$\gamma$ -MUUROLENE	0,01		
38	48,4	$\alpha$ -TERPINEOL	0,24		
39	48,7	BORNEOL	0,03		
40	48,8	GERMACRENE D	0,04		
41	49,7	$\alpha$ -MUUROLENE	0,01		
42	50,4	$\alpha$ -SELINENE	0,03		
43	50,6	BENZYL ACETATE	0,05		
44	51,2	BICYCLOGERMACRENE	0,05		
45	52,4	$\delta$ -CADINENE	0,10		
46	52,7	$\gamma$ -CADINENE	0,02		

**Identification results 2 : CINNAMON LEAF SRI LANKA BATCH CB0100**

Peak	RT (min)	Compound name	%	Norm (%)	Allergens (%)
47	53,9	BENZENEPROPANAL	0,04		
48	55,1	NEROL + Cis-SABINOL	0,04		
49	55,8	2-PHENYLETHYL ACETATE	0,02		
50	57,0	CALAMENENE	0,03		
51	57,4	p-CYMENE-8-OL	0,03		
52	59,1	BENZYL ALCOHOL	0,04		0,04
53	59,4	SAFROLE	0,96		
54	61,5	TETRADECANAL	0,03		
55	63,0	BENZENE PROPANOL ACETATE	0,10		
56	65,8	CARYOPHYLLENE OXIDE	0,43		
57	66,5	METHYLEUGENOL	0,03		
58	66,6	NEROLIDOL	0,02		
59	68,3	BENZENE PROPANOL	0,08		
60	68,6	<b>E-CINNAMALDEHYDE</b>	<b>1,29</b>	<b>0,8 – 1,5</b>	1,29
61	68,8	EPOXY-6,7-HUMULENE	0,07		
62	70,2	GLOBULOL	0,01		
63	72,2	SESQUITERPENOL	0,02		
64	72,6	SPATHULENOL	0,07		
65	74,0	<b>CINNAMYL ACETATE</b>	<b>1,62</b>	<b>1,1 – 1,8</b>	
66	74,8	<b>EUGENOL</b>	<b>77,67</b>	<b>70 - 83</b>	77,67
67	75,7	T-CADINOL	0,02		
68	76,2	SESQUITERPENOL	0,01		
69	76,7	CARVACROL	0,04		
70	77,6	ISOSPATHULENOL	0,02		
71	77,9	α-CADINOL	0,01		
72	79,0	<b>EUGENYL ACETATE</b>	<b>2,33</b>	<b>1,3 – 3,0</b>	
73	80,3	CINNAMIC ALCOHOL	0,10		0,10
74	81,2	CARYOPHYLLA-3,7-DIEN-6-OL	0,03		
75	82,8	CHAVICOL	0,12		
76	83,5	SESQUITERPENIC EPOXIDE	0,02		
77	84,7	SESQUITERPENOL	0,03		
78	91,9	EUGENOL METHOXY	0,02		
79	93,5	VANILLIN	0,01		
80	96,6	<b>BENZYL BENZOATE</b>	<b>3,06</b>	<b>2,0 – 4,0</b>	3,06
81	100,7	CINNAMALDEHYDE METHOXY ISOMER	0,03		
		<b>TOTAL</b>	<b>99,99</b>		<b>84,57</b>