



PLANT THERAPY
100% PURE ESSENTIAL OILS

GC/MS BATCH NUMBER: CC0103

ESSENTIAL OIL: CINNAMON BARK
BOTANICAL NAME: CINNAMOMUM VERUM
ORIGIN: SRI LANKA

KEY CONSTITUENTS PRESENT IN THIS BATCH OF CINNAMON BARK OIL	%
(E)-CINNAMALDEHYDE	74.1
EUGENOL	11.9
LIMONENE	2.6
LINALOOL	2.5
α -PINENE	2.4
β -PINENE	1.4
β -CARYOPHYLLENE	1.1

Comments from Robert Tisserand: Excellent sweet-spicy, powdery odor quality. Constituents are within expected ranges.

Date : May 29, 2017

SAMPLE IDENTIFICATION

Internal code : 17E19-PTH18-1-DM

Customer identification : Cinnamon Bark - Sri Lanka - CC010369R

Type : Essential oil

Source : *Cinnamomum verum*

Customer : Plant Therapy

ANALYSIS

Method : PC-PA-001-15E06, "Analysis of the composition of a liquid essential oil by GC-FID" (in French).

Analyst : Sylvain Mercier, M. Sc., chimiste

Analysis date : 2017-05-29

Checked and approved by :

Alexis St-Gelais, M. Sc., chimiste 2013-174

Note: This report may not be published, including online, without the written consent from Laboratoire PhytoChemia.

This report is digitally signed, it is only considered valid if the digital signature is intact.

IDENTIFIED COMPOUNDS

Identification	Column: BP5			Column: WAX			Molecular Class
	R.T.	R.I.	%	%	R.I.	R.T.	
Styrene	2.87	895	tr	0.01	1201	3.49*	Phenylpropanoid
Tricyclene	3.22	917	0.01	0.01	920	0.99	Monoterpene
α -Thujene	3.31	922	0.04	0.08	954	1.12	Monoterpene
α -Pinene	3.42	929	2.38	2.28	945	1.09	Monoterpene
Camphene	3.70	946	0.09	0.08	1008	1.35	Monoterpene
Sabinene	4.13	971	0.05	0.04	1060	1.84	Monoterpene
β -Pinene	4.19	975	1.44	1.35	1044	1.69	Monoterpene
Myrcene	4.47	991	0.07	0.07	1116	2.39	Monoterpene
α -Phellandrene	4.74*	1007	0.30	0.27	1109	2.31	Monoterpene
Δ^3 -Carene	4.74*	1007	[0.30]	0.02	1091	2.13	Monoterpene
α -Terpinene	4.93	1017	0.06	0.06	1122	2.48	Monoterpene
para-Cymene	5.11	1027	0.30	0.30	1207	3.57	Monoterpene
Limonene	5.16	1030	2.60	2.48	1141	2.72	Monoterpene
β -Phellandrene	5.19	1031	0.22	0.36	1146	2.78*	Monoterpene
1,8-Cineole	5.22	1033	0.07	[0.36]	1146	2.78*	Monoterp. ether
<i>cis</i> - β -Ocimene	5.33	1039	0.01	0.09	1186	3.31*	Monoterpene
<i>trans</i> - β -Ocimene	5.51	1049	0.01	[0.01]	1201	3.49*	Monoterpene
γ -Terpinene	5.70	1059	0.09	[0.09]	1186	3.31*	Monoterpene
<i>cis</i> -Linalool oxide (fur.)	5.97	1074	0.03	0.03	1375	6.07	Monoterp. alcohol
Isoterpinolene	6.10	1081	tr	tr	1218	3.72	Monoterpene
Terpinolene	6.17	1085	0.03	0.03	1223	3.79	Monoterpene
<i>trans</i> -Linalool oxide (fur.)	6.28	1091	0.03	0.03	1404	6.51	Monoterp. alcohol
para-Cymenene	6.37	1096	tr	0.01	1367	5.93	Monoterpene
Linalool	6.65	1107	2.53	2.54	1494	8.48	Monoterp. alcohol
Camphor	7.73	1147	0.01	tr	1425	6.87	Monoterp. ketone
Hydrocinnamaldehyde	8.38	1171	0.02				Phenylpropanoid
Terpinen-4-ol	8.69	1182	0.04	0.04	1531	9.43	Monoterp. alcohol
α -Terpineol	9.31	1203	0.10	0.11	1627	12.93*	Monoterp. alcohol
(<i>Z</i>)-Cinnamaldehyde	10.37	1226	0.43	0.33	1775	21.07	Phenylpropanoid
Hydrocinnamyl alcohol	10.97	1240	0.03	0.04	1945	32.77	Phenylpropanoid
(<i>E</i>)-Cinnamaldehyde	13.70	1300	74.13	74.02	1923	31.29	Phenylpropanoid
(<i>E</i>)-Cinnamyl alcohol	15.14	1322	0.01	0.01	2174	41.04	Phenylpropanoid
Eugenol	17.67*	1361	11.89	11.91	2063	37.76	Phenylpropanoid
α -Copaene	17.67*	1361	[11.89]	0.17	1432	7.04	Sesquiterpene
β -Caryophyllene	20.49	1403	1.09	1.13	1522	9.16	Sesquiterpene
α -Humulene	23.22	1436	0.12	0.14	1580	11.23	Sesquiterpene
(<i>E</i>)-Cinnamyl acetate	24.67	1453	0.53	0.55	2043	37.10	Phenylpropanoid ester
β -Selinene	26.01	1469	0.02	[0.11]	1627	12.93*	Sesquiterpene
Eugenyl acetate	30.78	1531	0.24	0.24	2158	40.67	Phenylpropanoid ester

Benzyl benzoate	42.09	1770	0.52	0.55	2480	47.98	Phenolic ester
Total identified			99.54%	99.38%			

*: Two or more compounds are coeluting on this column

[xx]: Duplicate percentage due to coelutions, not taken account in the identified total

Note: no correction factor was applied

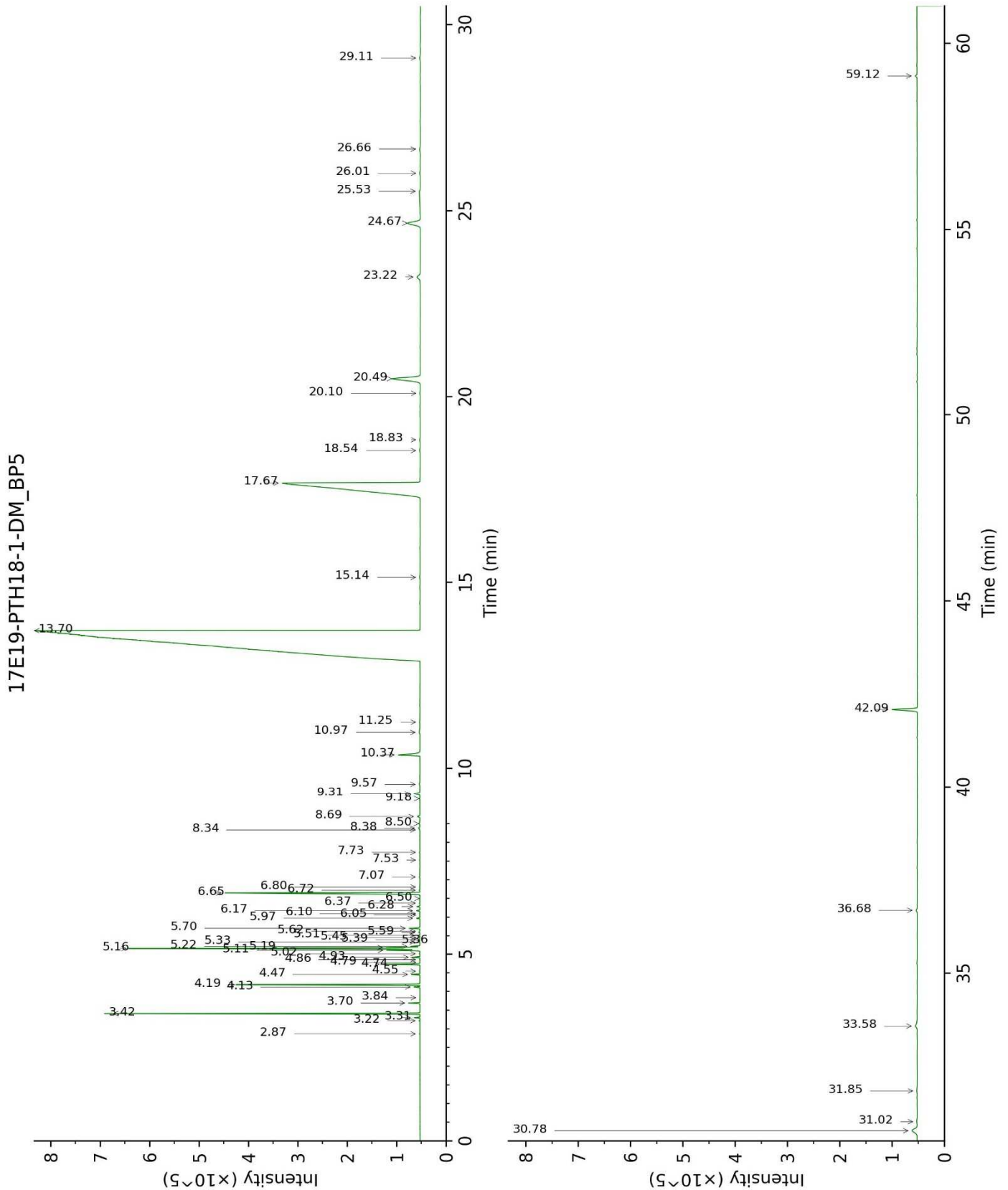
OTHER DATA

Physical aspect : Yellow liquid

Refractive index : 1.5880 ± 0.0003 (20 °C)

CONCLUSION

No adulterant, contaminant or diluent were detected using this method.



17E19-PTH18-1-DM_WAX

