

Date : July 6, 2017

SAMPLE IDENTIFICATION

Internal code : 17F29-PTH1-1-DM

Customer identification : Germain Chamomille Organic - Egypt - CC110175R

Type : Essential oil

Source : *Matricaria recutita*

Customer : Plant Therapy

ANALYSIS

Method : PC-PA-001-15E06, "Analysis of the composition of a liquid essential oil by GC-FID" (in French).

Analyst : Sylvain Mercier, M. Sc., chimiste

Analysis date : 2017-07-03

Checked and approved by :

Sylvain Mercier, M. Sc., chimiste 2014-005

Note: This report may not be published, including online, without the written consent from Laboratoire PhytoChemia.

This report is digitally signed, it is only considered valid if the digital signature is intact.

IDENTIFIED COMPOUNDS

Identification	Column: BP5			Column: WAX			Molecular Class
	R.T.	R.I.	%	%	R.I.	R.T.	
Isovaleral	0.67	674	0.04	0.08	758	0.58*	Aliphatic aldehyde
2-Methylbutyral	0.70	678	0.04	[0.08]	758	0.58*	Aliphatic aldehyde
Hexanal	1.73	807	0.02	0.01	1013	1.32	Aliphatic aldehyde
Ethyl 2-methylbutyrate	2.26	849	0.14	0.13	983	1.20	Aliphatic ester
Ethyl isovalerate	2.35	856	0.01	0.02	1019	1.38	Aliphatic ester
α-Pinene	3.43	930	0.02	0.02	945	1.03	Monoterpene
Camphene	3.72	947	0.02	0.02	1000	1.28	Monoterpene
Propyl 2-methylbutyrate	3.77	950	0.06	0.05	1083	1.98	Aliphatic ester
Sabinene	4.15	973	0.02	0.02	1060	1.76	Monoterpene
Myrcene	4.49	993	0.02	0.01	1115	2.30	Monoterpene
2-Pentylfuran	4.54	995	0.05	0.03	1173	3.02	Furan
6-Methyl-5-hepten-2-one	4.56	997	0.06	0.04	1273	4.38	Aliphatic ketone
Yomogi alcohol	4.72	1006	0.05	0.04	1353	5.55	Monoterp. alcohol
α-Phellandrene	4.77	1008	0.02	0.01	1107	2.21	Monoterpene
Octanal	4.88	1015	0.07	0.06	1231	3.79*	Aliphatic aldehyde
α-Terpinene	4.95	1019	0.02	0.01	1122	2.37	Monoterpene
para-Cymene	5.15	1029	0.08	0.09	1205	3.43	Monoterpene
Limonene	5.18	1031	0.04	0.03	1141	2.60	Monoterpene
β-Phellandrene	5.21	1033	tr	0.02	1144	2.65*	Monoterpene
1,8-Cineole	5.25	1035	0.02	[0.02]	1144	2.65*	Monoterp. ether
cis-β-Ocimene	5.37	1041	0.06	0.18	1186	3.19*	Monoterpene
Butyl 2-methylbutyrate	5.48	1047	0.01	[0.18]	1186	3.19*	Aliphatic ester
trans-β-Ocimene	5.55	1051	0.34	0.29	1199	3.36	Monoterpene
γ-Terpinene	5.74	1061	0.14	[0.18]	1186	3.19*	Monoterpene
Artemisia ketone	5.80	1065	0.33	0.31	1287	4.57	Monoterp. ketone
Artemisia alcohol	6.22*	1088	0.13	0.11	1447	7.13	Monoterp. alcohol
Terpinolene	6.22*	1088	[0.13]	[0.06]	1231	3.79*	Monoterpene
Nonanal	6.79	1113	0.12	0.10	1337	5.31	Aliphatic aldehyde
Artemisyl acetate	8.31	1168	0.01	0.02	1367	5.78	Monoterp. ester
Borneol	8.62	1180	0.07	18.54	1628	12.54*	Monoterp. alcohol
Terpinen-4-ol	8.81	1186	0.01	0.13	1528	9.03*	Monoterp. alcohol
α-Terpineol	9.48	1207	0.07	[18.54]	1628	12.54*	Monoterp. alcohol
(Z)-Hex-3-en-1-yl isovalerate	10.70	1234	0.01	0.02	1437	6.88	Aliphatic ester
Hexyl isovalerate	10.88	1238	0.03	0.03	1407	6.40	Aliphatic ester
(E)-Hex-2-en-1-yl isovalerate	11.35	1248	0.03	0.04	1463	7.52	Aliphatic ester
Geranial	12.54	1275	0.04	0.03	1659	13.92	Monoterp. aldehyde
Pelargonic acid	14.18	1307	0.05	0.08	2115	38.88	Fatty acid
Modheph-2-ene	17.75	1362	0.03	0.04	1439	6.93	Sesquiterpene
α-Isocomene	17.92	1364	0.01	0.01	1457	7.36	Sesquiterpene

β-Elemene	18.98	1380	0.09	[0.13]	1528	9.03*	Sesquiterpene
Benzyl isovalerate	19.62	1390	0.06	0.99	1807	22.33*	Phenolic ester
β-Caryophyllene	20.65	1405	0.10	0.07	1523	8.90	Sesquiterpene
Capric acid	21.57	1416	0.76	1.12	2203	41.36	Fatty acid
Aromadendrene	22.05	1421	0.07	0.04	1537	9.26	Sesquiterpene
allo-Aromadendrene	23.71	1441	0.09	0.10	1565	10.25	Sesquiterpene
<i>trans</i> -β-Farnesene	24.90	1456	18.16	[18.54]	1628	12.54*	Sesquiterpene
γ-Murolene	25.40	1462	0.17	0.12	1613	11.99	Sesquiterpene
Germacrene D	25.76	1466	1.38	[18.54]	1628	12.54*	Sesquiterpene
β-Selinene	26.34	1473	0.15	[18.54]	1628	12.54*	Sesquiterpene
α-Curcumene	26.54	1475	0.12	0.74	1696	15.82*	Sesquiterpene
α-Selinene	26.96*	1480	0.89	0.73	1631	12.65	Sesquiterpene
Bicyclgermacrene	26.96*	1480	[0.89]	0.11	1635	12.78	Sesquiterpene
α-Murolene	27.72	1490	0.07	0.99	1650	13.43*	Sesquiterpene
(<i>Z,E</i>)-α-Farnesene	27.87	1491	0.14	0.35	1678	14.87*	Sesquiterpene
γ-Cadinene	28.76	1502	0.17	0.14	1673	14.63	Sesquiterpene
β-Bisabolene	28.93	1505	0.07	[0.99]	1650	13.43*	Sesquiterpene
1,9-Dihydrochamazulene	29.22*	1509	1.81	[0.99]	1807	22.33*	Azulene
(<i>E,E</i>)-α-Farnesene	29.22*	1509	[1.81]	[0.74]	1696	15.82*	Sesquiterpene
δ-Cadinene	29.44	1512	0.25	[0.35]	1678	14.87*	Sesquiterpene
(<i>E</i>)-Nerolidol	33.98*	1575	0.75	0.08	1996	34.39	Sesquiterp. alcohol
Spathulenol	33.98*	1575	[0.75]	5.98	2029	35.81*	Sesquiterp. alcohol
Dendrolasin	34.16	1578	0.12	0.07	1876	26.97	Sesquiterp. ether
Viridiflorol	34.39	1581	0.16	0.11	1993	34.23	Sesquiterp. alcohol
MARE I	36.27	1612	0.12	0.20	1917	29.83	Oxygenated sesquiterpene
5,6-Dihydrochamazulene	36.58	1620	0.31	0.27	1971	33.29	Azulene
Isospathulenol	36.84	1626	0.08	1.60	2137	39.56*	Sesquiterp. alcohol
Bisabolol oxide isomer I	36.92	1628	0.39				Sesquiterp. alcohol
τ-Cadinol	37.49	1642	0.11	0.11	2066	37.41	Sesquiterp. alcohol
7,8-Dihydrochamazulene	37.60	1645	0.67	0.52	2015	35.21	Azulene
α-Murolol	37.70	1647	0.19	0.17	2097	38.32	Sesquiterp. alcohol
α-Cadinol	37.98*	1654	5.82	0.27	2129	39.32	Sesquiterp. alcohol
α-Bisabolol oxide B	37.98*	1654	[5.82]	[5.98]	2029	35.81*	Sesquiterp. alcohol
Bisabolol oxide isomer II	38.18	1659	0.70				Sesquiterp. alcohol
α-Bisabolone oxide	39.05	1680	4.69	4.96	2052	36.82	Sesquiterp. alcohol
α-Bisabolol	39.50	1691	1.65	[1.60]	2137	39.56*	Sesquiterp. alcohol
Chamazulene	40.66	1726	2.94	3.01	2235	42.20	Azulene
α-Bisabolol oxide A	41.76	1760	43.64	44.75	2312	44.01*	Sesquiterp. alcohol
<i>M. recutita</i> biomarker	42.96	1798	0.21	0.15	2212	41.62	
Phytone	44.44	1852	0.34	0.34	2092	38.16	Aliphatic ketone
<i>cis</i> -Spiroether	45.70	1898	4.47	4.38	2740	52.50	Polyyne
<i>trans</i> -Spiroether	46.27	1920	0.62				Polyyne
(<i>Z</i>)-Tibetin spiroether	47.34	1963	0.14				Polyyne

Phytol	50.60	2102	0.15	0.16	2573	49.43	Diterp. alcohol
Tricosane	55.02	2309	0.30	[44.75]	2312	44.01*	Alkane
Pentacosane	58.98	2511	0.81	1.05	2541	48.80	Alkane
Total identified	96.22%			94.3%			

*: Two or more compounds are coeluting on this column

[xx]: Duplicate percentage due to coelutions, not taken account in the identified total

Note: no correction factor was applied

OTHER DATA

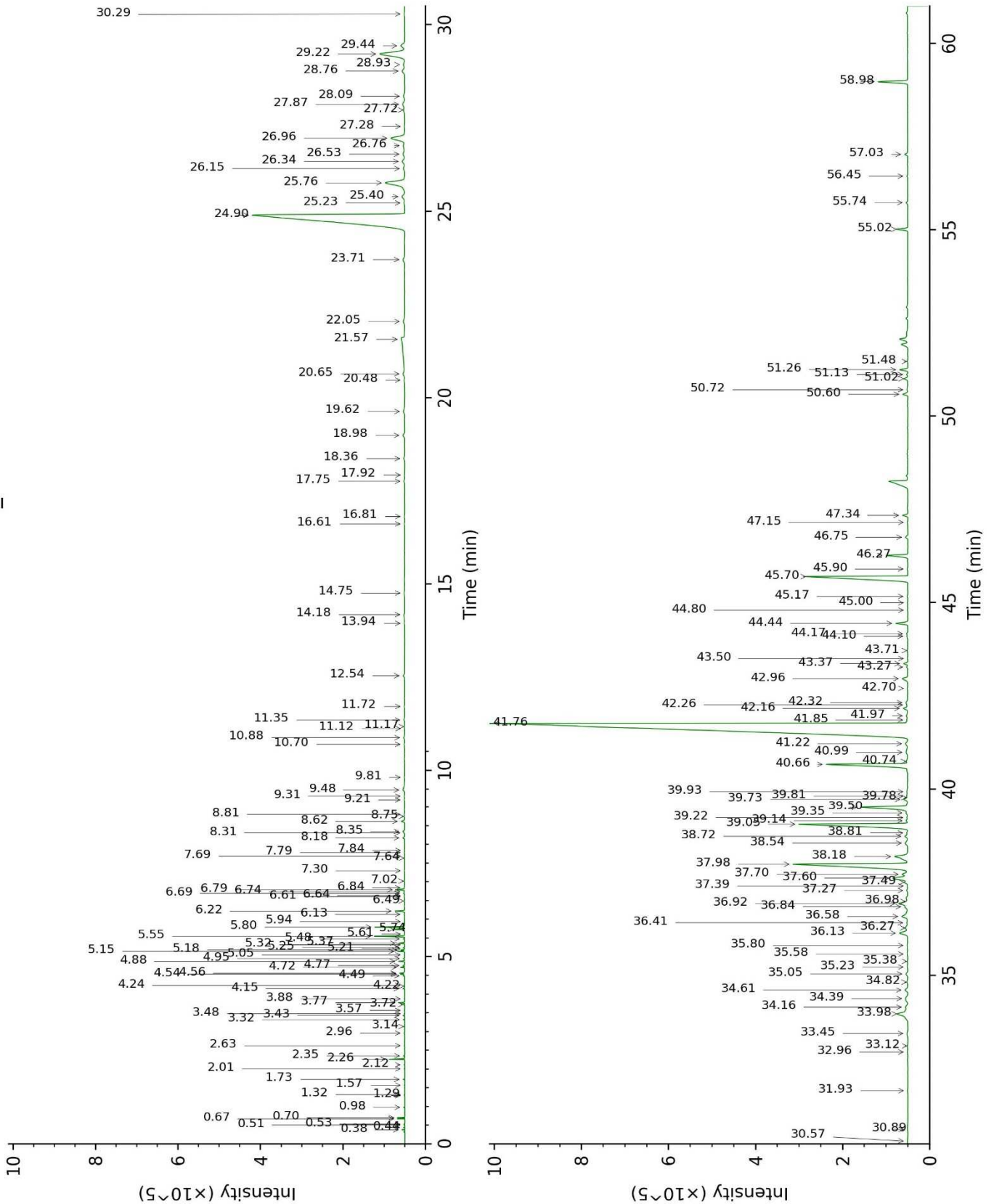
Physical aspect : Dark blue liquid

Refractive index : N/A (too dark)

CONCLUSION

No adulterant, contaminant or diluent were detected using this method.

17F29-PTH1-1-DM_BP5



17F29-PTH1-1-DM_WAX

