

GC/MS BATCH NUMBER: C30103

ESSENTIAL OIL: CAMPHOR WHITE
BOTANICAL NAME: CINNAMOMUM CAMPHORA
ORIGIN: TAIWAN

KEY CONSTITUENTS PRESENT IN THIS BATCH OF CAMPHOR WHITEOIL	%
LIMONENE	42.9
1,8-CINEOLE	18.8
α -PINENE	11.1
p-CYMENE	8.0
SABINENE	4.2
α -TERPINENE	3.6
MYRCENE	3.1
β -PINENE	2.2
γ -TERPINENE	1.6

Comments from Robert Tisserand: Light, clean Eucalyptus-like odor quality with a hint of Lemon. Constituents are in expected amounts.

Date : November 10, 2017

SAMPLE IDENTIFICATION

Internal code : 17K08-PTH3-1-CC

Customer identification : Camphor White - Taiwan - C3010367R

Type : Essential oil

Source : *Cinnamomum camphora*

Customer : Plant Therapy

ANALYSIS

Method : PC-PA-001-15E06, "Analysis of the composition of a liquid essential oil by GC-FID" (in French).

Identifications double-checked by GC-MS

Analyst : Sylvain Mercier, M. Sc., chimiste

Analysis date : 2017-11-10

Checked and approved by :

Alexis St-Gelais, M. Sc., chimiste 2013-174

Note: This report may not be published, including online, without the written consent from Laboratoire PhytoChemia.

This report is digitally signed, it is only considered valid if the digital signature is intact.

IDENTIFIED COMPOUNDS

Identification	Column: BP5			Column: WAX			Molecular Class
	R.T.	R.I.	%	%	R.I.	R.T.	
Hashishene	3.22	915	0.03	11.27	952	1.17*	Monoterpene
Tricyclene	3.23	916	0.01	tr	922	1.05	Monoterpene
α -Thujene	3.32	921	0.34	[11.27]	952	1.17*	Monoterpene
α -Pinene	3.45	928	11.14	[11.27]	952	1.17*	Monoterpene
α -Fenchene	3.69	943	0.09	0.12	995	1.39	Monoterpene
Camphene	3.71	944	0.98	1.03	1001	1.45	Monoterpene
Sabinene	4.16	970	4.11	4.17	1055	1.98	Monoterpene
β -Pinene	4.22	973	2.23	2.07	1039	1.81	Monoterpene
Myrcene	4.49	990	3.05	2.73	1117	2.57	Monoterpene
6-Methyl-5-hepten-2-one	4.56	994	0.11	0.10	1275	4.76	Aliphatic ketone
α -Phellandrene	4.77*	1005	1.16	0.78	1110	2.48	Monoterpene
Δ^3 -Carene	4.77*	1005	[1.16]	0.05	1095	2.29	Monoterpene
6-Methyl-5-hepten-2-ol	4.82	1008	0.18	0.19	1407	6.86	Aliphatic alcohol
α -Terpinene	4.96	1016	3.57	3.97	1124	2.67	Monoterpene
Limonene	5.29*	1034	52.07	42.93	1151	3.01	Monoterpene
para-Cymene	5.29*	1034	[52.07]	7.99	1210	3.81*	Monoterpene
1,8-Cineole	5.32	1036	18.75	19.73	1154	3.05	Monoterp. ether
<i>cis</i> - β -Ocimene	5.37	1038	0.08	1.65	1190	3.53*	Monoterpene
<i>trans</i> - β -Ocimene	5.54	1048	0.20	[7.99]	1210	3.81*	Monoterpene
γ -Terpinene	5.74	1058	1.56	[1.65]	1190	3.53*	Monoterpene
<i>cis</i> -Sabinene hydrate	6.07	1076	0.01	0.09	1400	6.70	Monoterp. alcohol
Terpinolene	6.20	1083	0.01	0.02	1230	4.11	Monoterpene
Fenchone	6.35	1092	0.04	0.04	1318	5.42	Monoterp. ketone
Total identified			99.72%	98.93%			

*: Two or more compounds are coeluting on this column

[xx]: Duplicate percentage due to coelutions, not taken account in the identified total

Note: no correction factor was applied

OTHER DATA

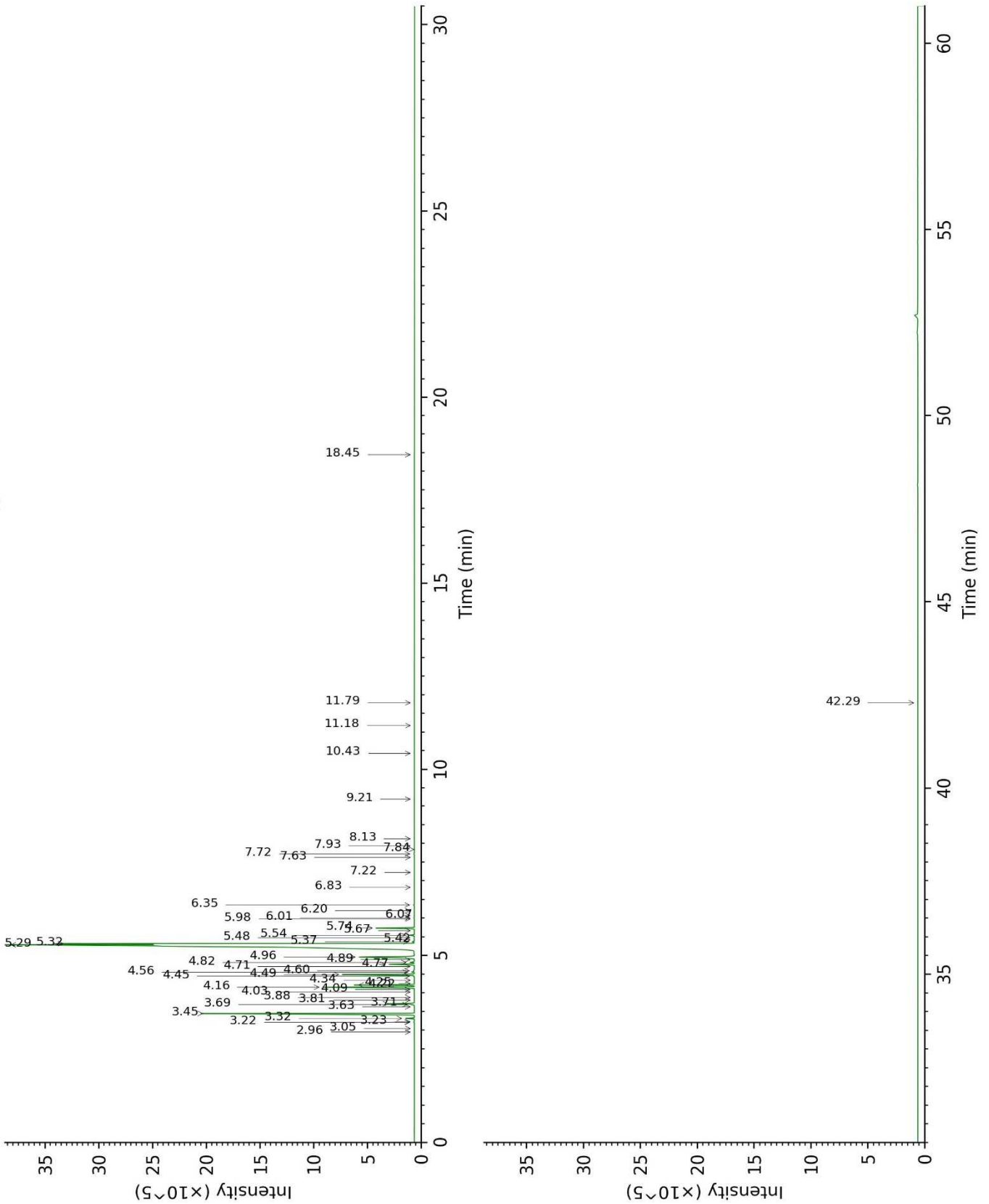
Physical aspect : Clear liquid

Refractive index : 1.4688 \pm 0.0003 (20 °C)

CONCLUSION

No adulterant, contaminant or diluent were detected using this method.

17K08-PTH3-1-CC_BP5



17K08-PTH3-1-CC_WAX

