



PLANT THERAPY
100% PURE ESSENTIAL OILS

GC/MS BATCH NUMBER: C30102

ESSENTIAL OIL: CAMPHOR
BOTANICAL NAME: CINNAMOMUM CAMPHORA
ORIGIN: CHINA

KEY CONSTITUENTS PRESENT IN THIS BATCH OF CAMPHOR OIL	%
LIMONENE	26.9
1,8-CINEOLE	25.4
p-CYMENE	15.5
α -PINENE	12.3
γ -TERPINENE	4.3
SABINENE	3.8
MYRCENE	3.2
β -PINENE	2.0
α -TERPINENE	1.6
α -PHELLANDRENE	1.4
α -THUJENE	1.2

Comments from Robert Tisserand: Pleasant fresh, woody odor profile. Constituents are in expected amounts.

Date : May 24, 2017

SAMPLE IDENTIFICATION

Internal code : 17E19-PTH4-1-DM

Customer identification : Camphor - China - C30102610

Type : Essential oil

Source : *Cinnamomum camphora*

Customer : Plant Therapy

ANALYSIS

Method : PC-PA-001-15E06, "Analysis of the composition of a liquid essential oil by GC-FID" (in French).

Analyst : Sylvain Mercier, M. Sc., chimiste

Analysis date : 2017-05-24

Checked and approved by :

Alexis St-Gelais, M. Sc., chimiste 2013-174

Note: This report may not be published, including online, without the written consent from Laboratoire PhytoChemia.

This report is digitally signed, it is only considered valid if the digital signature is intact.

IDENTIFIED COMPOUNDS

Identification	Column: BP5			Column: WAX			Molecular Class
	R.T.	R.I.	%	%	R.I.	R.T.	
Hashishene	3.21	916	0.02	11.80	945	1.11*	Monoterpene
Tricyclene	3.22	917	0.01	0.01	915	0.99	Monoterpene
α -Thujene	3.31	923	1.19	1.41	952	1.14	Monoterpene
α -Pinene	3.44	930	12.25	[11.80]	945	1.11*	Monoterpene
α -Fenchene	3.68	944	0.07	0.08	989	1.30	Monoterpene
Camphene	3.70	946	0.79	0.75	998	1.36	Monoterpene
Sabinene	4.14	972	3.77	3.68	1052	1.87	Monoterpene
β -Pinene	4.20	975	1.98	1.91	1036	1.70	Monoterpene
Myrcene	4.48	992	3.18	3.08	1114	2.42	Monoterpene
6-Methyl-5-hepten-2-one	4.53	995	0.18	0.17	1272	4.58	Aliphatic ketone
α -Phellandrene	4.75*	1007	1.62	1.39	1108	2.33	Monoterpene
Δ^3 -Carene	4.75*	1007	[1.62]	0.05	1078	2.15	Monoterpene
α -Terpinene	4.94	1018	1.63	1.68	1121	2.51	Monoterpene
para-Cymene	5.21	1033	15.50	8.37	1207	3.64	Monoterpene
Limonene	5.26	1035	26.86	32.08	1147	2.85	Monoterpene
1,8-Cineole	5.30	1038	25.36	27.40	1151	2.90	Monoterp. ether
<i>cis</i> - β -Ocimene	5.35	1040	0.08	4.33	1187	3.37*	Monoterpene
<i>trans</i> - β -Ocimene	5.53	1050	0.85	0.81	1200	3.53	Monoterpene
γ -Terpinene	5.73	1061	4.32	[4.33]	1187	3.37*	Monoterpene
<i>cis</i> -Linalool oxide (fur.)	5.97	1074	0.02	0.01	1370	6.08	Monoterp. alcohol
Terpinolene	6.18	1086	0.02	0.02	1220	3.81	Monoterpene
Total identified			99.70%	99.03%			

*: Two or more compounds are coeluting on this column

[xx]: Duplicate percentage due to coelutions, not taken account in the identified total

Note: no correction factor was applied

OTHER DATA

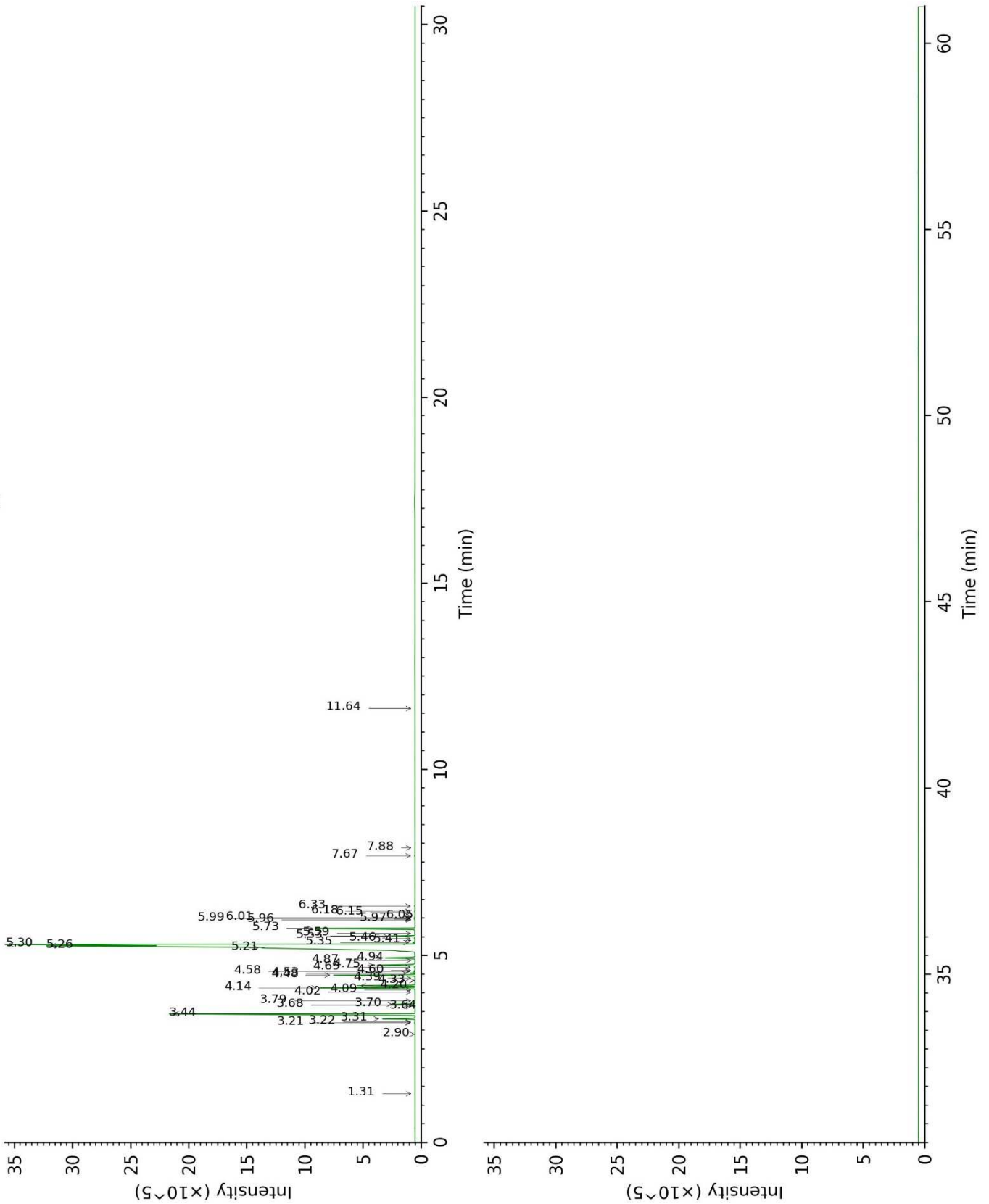
Physical aspect : Clear liquid

Refractive index : 1.4670 \pm 0.0003 (20 °C)

CONCLUSION

No adulterant, contaminant or diluent were detected using this method.

17E19-PTH4-1-DM_BP5



17E19-PTH4-1-DM_WAX

