

Date : July 10, 2020

SAMPLE IDENTIFICATION

Internal code : 17118-PTH9-1-DM

Customer identification : Basil Linalool Organic - Nepal – B2010163R

Type : Essential oil

Source : *Ocimum basilicum*

Customer : Plant Therapy

ANALYSIS

Method : PC-PA-001-15E06, "Analysis of the composition of a liquid essential oil by GC-FID" (in French).

Identifications double-checked by GC-MS

Analyst : Sylvain Mercier, M. Sc., chimiste

Analysis date : 2017-09-18

Checked and approved by :

Alexis St-Gelais, M. Sc., chimiste 2013-174

Note: This report may not be published, including online, without the written consent from Laboratoire PhytoChemia.

This report is digitally signed, it is only considered valid if the digital signature is intact. The report has been updated from its first version issued on September 18, 2017, to correct batch number.

IDENTIFIED COMPOUNDS

Identification	Column: BP5			Column: WAX			Molecular Class
	R.T.	R.I.	%	%	R.I.	R.T.	
<i>cis</i> -Hex-3-en-1-ol	2.48	864	0.06	0.04	1321	5.59	Aliphatic alcohol
α -Thujene	3.31	920	0.08	0.13	948	1.23	Monoterpene
α -Pinene	3.41	926	0.34	0.25	938	1.19	Monoterpene
α -Fenchene	3.70	943	0.10	0.08	988	1.48	Monoterpene
Sabinene	4.13	969	0.18	0.15	1055	2.03	Monoterpene
β -Pinene	4.19	972	0.40	0.34	1034	1.85	Monoterpene
Myrcene	4.47	989	0.35	0.38	1111	2.63*	Monoterpene
α -Phellandrene	4.75	1004	0.03	[0.38]	1111	2.63*	Monoterpene
Limonene	5.13	1025	0.22	4.02	1141	3.01*	Monoterpene
β -Phellandrene	5.17	1027	0.36	[4.02]	1141	3.01*	Monoterpene
1,8-Cineole	5.23	1031	3.61	[4.02]	1141	3.01*	Monoterp. ether
<i>cis</i> - β -Ocimene	5.35	1037	0.06	0.21	1183	3.60*	Monoterpene
<i>trans</i> - β -Ocimene	5.53	1047	0.78	1.00	1202	3.79	Monoterpene
γ -Terpinene	5.72	1057	0.18	[0.21]	1183	3.60*	Monoterpene
<i>cis</i> -Linalool oxide (fur.)	6.00	1072	0.05	0.05	1374	6.42	Monoterp. alcohol
<i>cis</i> -Sabinene hydrate	6.06	1075	0.14	0.21	1401	6.92*	Monoterp. alcohol
Terpinolene	6.19	1083	0.15	0.14	1223	4.10	Monoterpene
<i>trans</i> -Linalool oxide (fur.)	6.31	1089	0.13	[0.21]	1401	6.92*	Monoterp. alcohol
Linalool	6.89*	1113	64.93	65.15	1500	9.39	Monoterp. alcohol
<i>trans</i> -Sabinene hydrate	6.89*	1113	[64.93]	0.15	1477	8.75	Monoterp. alcohol
(<i>E</i>)-Epoxyocimene	7.63	1140	0.10				Monoterp. ether
Camphor	7.80	1146	0.35	0.46	1420	7.36*	Monoterp. ketone
Menthone	7.99	1153	0.03	0.05	1396	6.80	Monoterp. ketone
Borneol	8.64	1177	0.31	3.07	1617	14.02*	Monoterp. alcohol
Terpinen-4-ol	8.82	1183	1.57	5.59	1524	10.26*	Monoterp. alcohol
Methylchavicol	9.47*	1203	0.74	0.94	1581	12.39*	Phenylpropanoid
α -Terpineol	9.47*	1203	[0.74]	[3.07]	1617	14.02*	Monoterp. alcohol
Citronellol	10.82	1233	0.08	0.07	1703	18.65	Monoterp. alcohol
Neral	11.16	1241	0.09	0.20	1594	12.88*	Monoterp. aldehyde
Geraniol	11.97	1258	4.69	4.99	1776	23.59	Monoterp. alcohol
Geranial	12.68	1274	0.17	0.17	1641	15.32	Monoterp. aldehyde
Bornyl acetate	12.92	1279	0.81	0.89	1506	9.62	Monoterp. ester
α -Cubebene	16.22	1335	0.02	0.01	1412	7.19	Sesquiterpene
Eugenol	17.73*	1358	3.31	3.21	2053	38.86	Phenylpropanoid
α -Copaene	17.73*	1358	[3.31]	[0.46]	1420	7.36*	Sesquiterpene
Neryl acetate	17.87	1360	0.03	1.64	1664	16.53*	Monoterp. ester
β -Bourbonene	18.12	1363	0.09	0.10	1451	8.12	Sesquiterpene
β -Elemene	18.94	1376	0.74	[5.59]	1524	10.26*	Sesquiterpene
Geranyl acetate	19.36	1382	0.55	0.65	1688	17.80*	Monoterp. ester
β -Caryophyllene	20.59	1400	0.30	[5.59]	1524	10.26*	Sesquiterpene
β -Gurjunene	21.21	1408	0.07	[5.59]	1524	10.26*	Sesquiterpene

<i>trans</i> - α -Bergamotene	22.21	1419	2.97	[5.59]	1524	10.26*	Sesquiterpene
<i>cis</i> - β -Farnesene	22.91	1428	0.13	[0.20]	1594	12.88*	Sesquiterpene
α -Humulene	23.40	1434	0.36	[0.94]	1581	12.39*	Sesquiterpene
Dauca-5,8-diene	24.08	1442	0.33	[0.94]	1581	12.39*	Sesquiterpene
<i>trans</i> - β -Farnesene	24.49	1447	0.10	[3.07]	1617	14.02*	Sesquiterpene
Germacrene D	25.66	1461	2.23	[3.07]	1617	14.02*	Sesquiterpene
Viridiflorene	26.27	1468	0.22	0.13	1608	13.56	Sesquiterpene
Bicyclgermacrene	26.86	1475	0.36	0.29	1635	15.02	Sesquiterpene
Valencene	27.54	1483	0.54	0.63	1658	16.22	Sesquiterpene
δ -Guaiene	27.79	1486	0.61	0.50	1628	14.62	Sesquiterpene
γ -Cadinene	28.73	1497	1.59	[1.64]	1664	16.53*	Sesquiterpene
δ -Cadinene	29.36	1506	0.18	[0.65]	1688	17.80*	Sesquiterpene
<i>trans</i> -Calamenene	30.20	1518	0.11	0.19	1724	20.06	Sesquiterpene
(<i>E</i>)-Nerolidol	33.85	1569	0.37	0.36	1979	36.17	Sesquiterp. alcohol
1,10-diepi-Cubenol	36.01	1600	0.31	0.30	1946	34.69	Sesquiterp. alcohol
τ -Cadinol	37.55	1638	1.64	1.78	2064	39.18	Sesquiterp. alcohol
β -Eudesmol	37.86	1646	0.04	0.07	2124	40.97	Sesquiterp. alcohol
α -Cadinol	38.08	1651	0.14	0.12	2115	40.75	Sesquiterp. alcohol
Total identified			98.43%	98.71%			

*: Two or more compounds are coeluting on this column

[xx]: Duplicate percentage due to coelutions, not taken account in the identified total

Note: no correction factor was applied

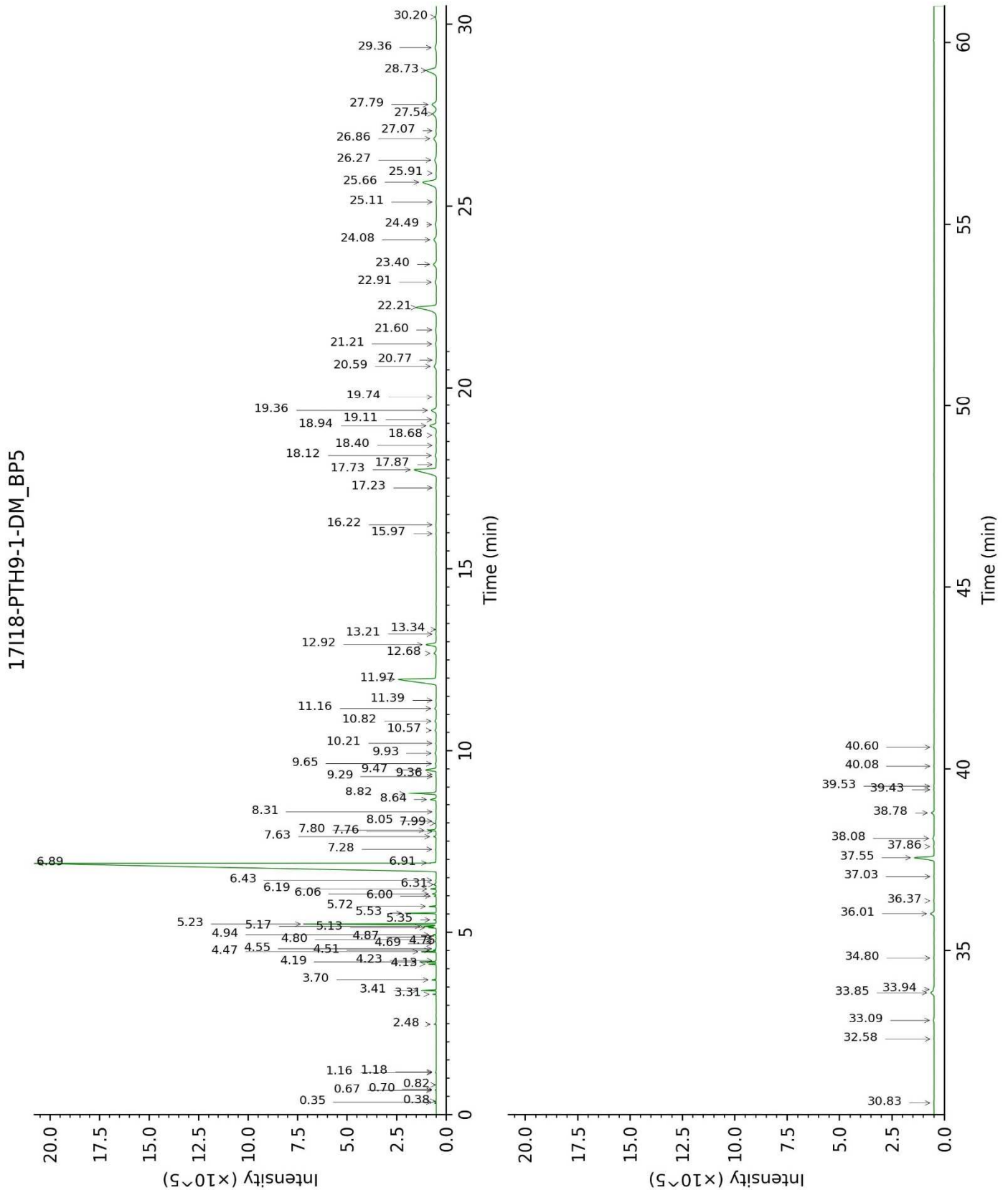
OTHER DATA

Physical aspect : Faintly yellow liquid

Refractive index : 1.4695 \pm 0.0003 (20 °C)

CONCLUSION

No adulterant, contaminant or diluent were detected using this method.



17118-PTH9-1-DM_WAX

