

GC/MS BATCH NUMBER: BN0103

ESSENTIAL OIL: BALSAM FIR
BOTANICAL NAME: ABIES BALSAMEA
ORIGIN: CANADA

KEY CONSTITUENTS PRESENT IN THIS BATCH OF BALSAM FIR OIL	%
β -PINENE	33.5
α -PINENE	16.9
Δ 3-CARENE	13.8
LIMONENE	8.3
BORNYL ACETATE	6.5
CAMPHENE	5.5
β -PHELLANDRENE	4.4
MYRCENE	1.8
SANTENE	1.6
TERPINOLENE	1.2

Comments from Robert Tisserand: Highly fragrant, green-coniferous odor quality. Constituents are in expected amounts.

Date : November 15, 2017

SAMPLE IDENTIFICATION

Internal code : 17K10-PTH1-1-CC

Customer identification : Balsam Fir - Canada - BN010377R

Type : Essential oil

Source : *Abies balsamea*

Customer : Plant Therapy

ANALYSIS

Method : PC-PA-001-15E06, "Analysis of the composition of a liquid essential oil by GC-FID" (in French).

Identifications double-checked by GC-MS

Analyst : Sylvain Mercier, M. Sc., chimiste

Analysis date : 2017-11-14

Checked and approved by :

Alexis St-Gelais, M. Sc., chimiste 2013-174

Note: This report may not be published, including online, without the written consent from Laboratoire PhytoChemia.

This report is digitally signed, it is only considered valid if the digital signature is intact.

IDENTIFIED COMPOUNDS

Identification	Column: BP5			Column: WAX			Molecular Class
	R.T.	R.I.	%	%	R.I.	R.T.	
Toluene	1.32	759	0.01	17.07	949	1.16*	Simple phenolic
<i>cis</i> -Hex-3-en-1-ol	2.50	865	0.01	0.09	1316	5.39*	Aliphatic alcohol
Santene	2.62	874	1.55	1.45	885	0.91	Normonoterpene
Tricyclene	3.22	915	0.82	0.78	920	1.04	Monoterpene
α -Thujene	3.31	920	0.15	[17.07]	949	1.16*	Monoterpene
α -Pinene	3.45	928	16.94	[17.07]	949	1.16*	Monoterpene
Camphene	3.72*	944	5.57	5.52	999	1.43	Monoterpene
α -Fenchene	3.72*	944	[5.57]	0.11	991	1.36	Monoterpene
Thuja-2,4(10)-diene	3.80	949	0.05	33.42	1042	1.84*	Monoterpene
Sabinene	4.16	970	0.09	[33.42]	1042	1.84*	Monoterpene
β -Pinene	4.26	976	33.47	[33.42]	1042	1.84*	Monoterpene
Myrcene	4.48	989	1.82	2.04	1115	2.54*	Monoterpene
Δ 3-Carene	4.79*	1007	13.97	13.81	1095	2.29	Monoterpene
α -Phellandrene	4.79*	1007	[13.97]	[2.04]	1115	2.54*	Monoterpene
<i>cis</i> -Hex-3-en-1-yl acetate	4.87	1011	0.01	0.03	1264	4.60	Aliphatic ester
α -Terpinene	4.94	1015	0.18	[2.04]	1115	2.54*	Monoterpene
Limonene	5.20*	1029	8.32	5.31	1140	2.88	Monoterpene
<i>para</i> -Cymene	5.20*	1029	[8.32]	0.16	1207	3.75*	Monoterpene
β -Phellandrene	5.23	1031	4.37	7.19	1146	2.95	Monoterpene
<i>cis</i> - β -Ocimene	5.35	1037	0.01	0.27	1187	3.48*	Monoterpene
<i>trans</i> - β -Ocimene	5.52	1047	0.01	[0.16]	1207	3.75*	Monoterpene
γ -Terpinene	5.71	1057	0.29	[0.27]	1187	3.48*	Monoterpene
Isoterpinolene	6.11	1078	0.04	1.20	1222	3.98*	Monoterpene
Terpinolene	6.19	1083	1.17	[1.20]	1222	3.98*	Monoterpene
Fenchone	6.34	1091	0.08	[0.09]	1316	5.39*	Monoterp. ketone
<i>para</i> -Cymenene	6.41	1095	0.07	0.09	1363	6.13	Monoterpene
Linalool	6.69	1106	0.06	6.95	1505	9.19*	Monoterp. alcohol
endo-Fenchol	7.15	1122	0.09	0.39	1522	9.84*	Monoterp. alcohol
<i>trans</i> -Pinocarveol	7.61	1139	0.14	0.10	1561	11.26	Monoterp. alcohol
Camphor	7.75	1144	0.20	0.19	1418	7.13	Monoterp. ketone
Camphene hydrate	8.03	1155	0.06	[0.39]	1522	9.84*	Monoterp. alcohol
Pinocarvone	8.21	1161	0.03	0.04	1469	8.33	Monoterp. ketone
Borneol	8.63	1176	0.41	0.29	1614	13.33*	Monoterp. alcohol
Terpinen-4-ol	8.79	1182	0.26	[0.39]	1522	9.84*	Monoterp. alcohol
Myrtenol	9.31	1200	0.05	0.05	1698	17.73	Monoterp. alcohol
α -Terpineol	9.48	1204	0.96	1.08	1617	13.50*	Monoterp. alcohol
endo-Fenchyl acetate	9.84	1211	0.06	0.05	1404	6.79	Monoterp. ester
Thymol methyl ether	10.61	1228	0.02	[0.39]	1522	9.84*	Monoterp. ether
Piperitone	11.78	1254	0.10	[1.08]	1617	13.50*	Monoterp. ketone
Bornyl acetate	12.97	1280	6.52	[6.95]	1505	9.19*	Monoterp. ester
Thymol	15.42	1323	0.31	0.89	2116	40.35	Monoterp. alcohol

Longifolene	19.62	1386	0.18	0.29	1486	8.73	Sesquiterpene
β -Caryophyllene	20.55	1400	0.20	0.24	1517	9.64	Sesquiterpene
α -Humulene	23.36	1433	0.10	0.14	1578	11.91	Sesquiterpene
<i>trans</i> - β -Farnesene	24.44	1446	0.02	[0.29]	1614	13.33*	Sesquiterpene
β -Bisabolene	28.80	1498	0.22	0.22	1655	15.47	Sesquiterpene
<i>trans</i> - α -Bisabolene	31.81	1540	0.08	0.06	1704	18.04	Sesquiterpene
(<i>E</i>)-Nerolidol	33.81	1568	0.02	0.03	1984	35.77	Sesquiterp. alcohol
<i>cis</i> -Abienol	51.54	2135	0.02	0.02	2662	52.16	Diterp. alcohol
Total identified			99.11%	99.57%			

*: Two or more compounds are coeluting on this column

[xx]: Duplicate percentage due to coelutions, not taken account in the identified total

Note: no correction factor was applied

OTHER DATA

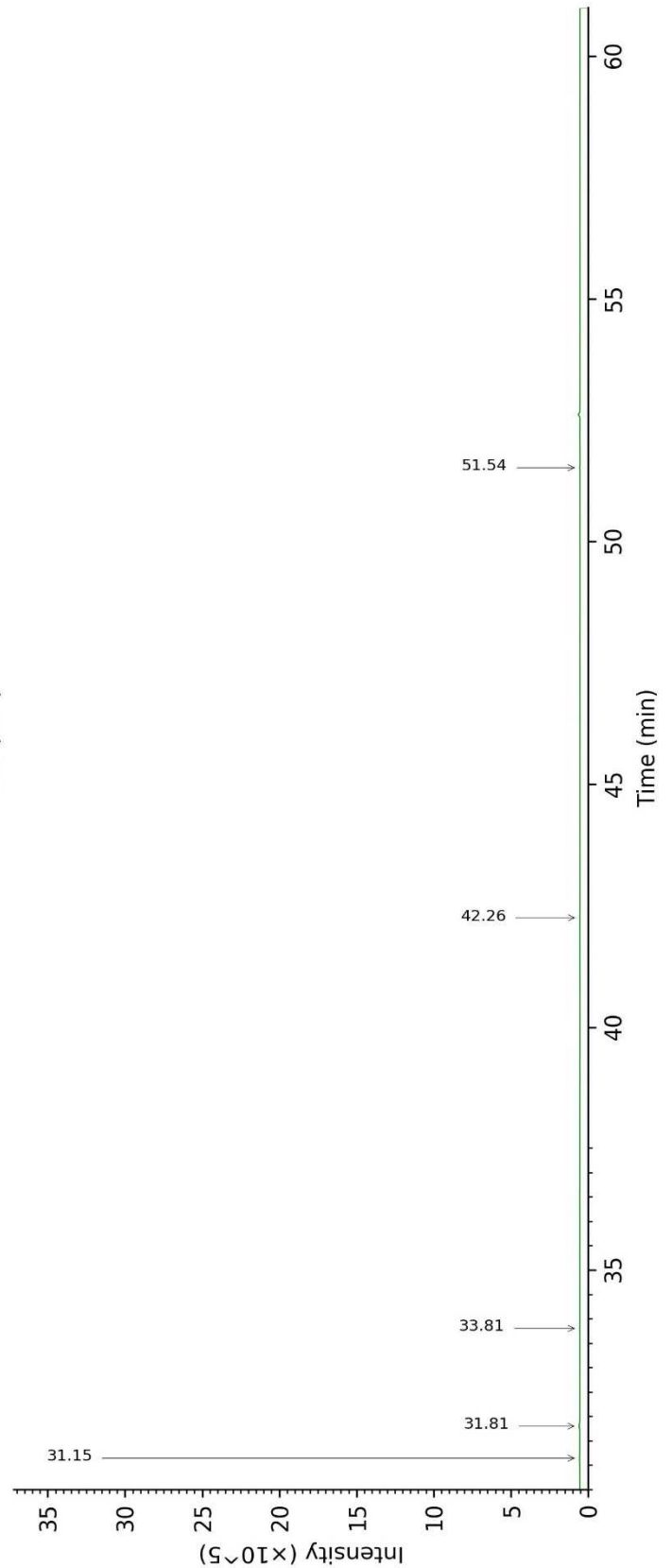
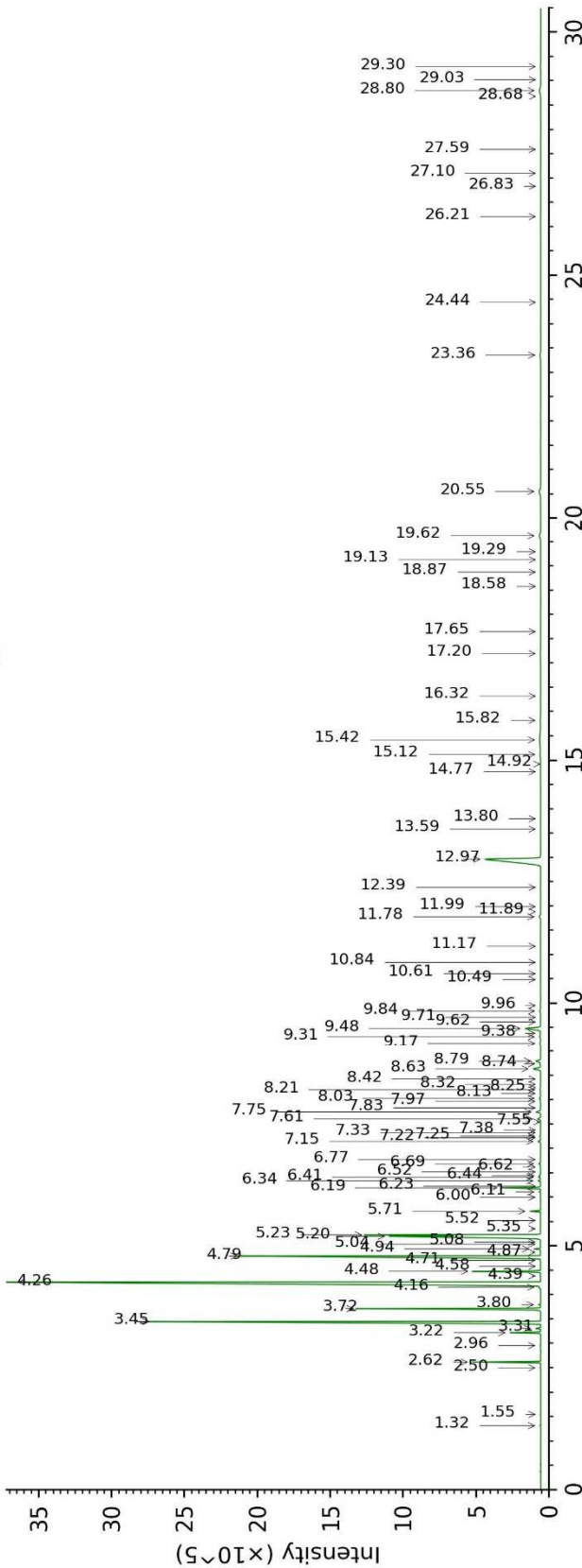
Physical aspect : Clear liquid

Refractive index : 1.4723 \pm 0.0003 (20 °C)

CONCLUSION

No adulterant, contaminant or diluent were detected using this method.

17K10-PTH1-1-CC_BP5



17K10-PTH1-1-CC_WAX

