



PLANT THERAPY
100% PURE ESSENTIAL OILS

GC/MS BATCH NUMBER: A10102

ESSENTIAL OIL: ALLSPICE
BOTANICAL NAME: PIMENTA OFFICINALIS
ORIGIN: JAMAICA

KEY CONSTITUENTS PRESENT IN THIS BATCH OF ALLSPICE OIL	%
EUGENOL	83.5
β -CARYOPHYLLENE	6.1
AROMADENDRENE + METHYLEUGENOL	5.3
α -HUMULENE	1.1

Comments from Robert Tisserand: Bright, sweet-clove odor profile. Constituents are in expected amounts.

Date : July 31, 2017

SAMPLE IDENTIFICATION

Internal code : 17G28-PTH5-1-CC

Customer identification : Allspice - Jamaica - A1010266R

Type : Essential oil

Source : *Pimenta officinalis*

Customer : Plant Therapy

ANALYSIS

Method : PC-PA-001-15E06, "Analysis of the composition of a liquid essential oil by GC-FID" (in French).

Identifications double-checked by GC-MS

Analyst : Sylvain Mercier, M. Sc., chimiste

Analysis date : 2017-07-31

Checked and approved by :

Alexis St-Gelais, M. Sc., chimiste 2013-174

Note: This report may not be published, including online, without the written consent from Laboratoire PhytoChemia.

This report is digitally signed, it is only considered valid if the digital signature is intact.

IDENTIFIED COMPOUNDS

Identification	Column: BP5			Column: WAX			Molecular Class
	R.T.	R.I.	%	%	R.I.	R.T.	
α -Thujene	3.34	924	0.01	0.02	955	1.05	Monoterpene
α -Pinene	3.44	930	0.03	0.03	946	1.01	Monoterpene
Myrcene	4.51	994	0.03	0.03	1101	2.24	Monoterpene
α -Phellandrene	4.78	1009	0.10	0.08	1097	2.18	Monoterpene
α -Terpinene	4.97	1020	0.02	0.02	1124	2.33	Monoterpene
para-Cymene	5.16	1030	0.12	0.12	1204	3.36	Monoterpene
Limonene	5.20	1032	0.06	0.18	1144	2.60*	Monoterpene
β -Phellandrene	5.23	1034	0.02	[0.18]	1144	2.60*	Monoterpene
1,8-Cineole	5.26	1035	0.13	[0.18]	1144	2.60*	Monoterp. ether
<i>cis</i> - β -Ocimene	5.38	1042	0.01	0.04	1186	3.14*	Monoterpene
<i>trans</i> - β -Ocimene	5.56	1052	0.09	0.08	1200	3.30	Monoterpene
γ -Terpinene	5.75	1062	0.04	[0.04]	1186	3.14*	Monoterpene
Terpinolene	6.23	1088	0.10	0.10	1222	3.59	Monoterpene
Linalool	6.73	1111	0.03	0.03	1486	7.88	Monoterp. alcohol
Terpinen-4-ol	8.86	1188	0.07	6.33	1530	8.90*	Monoterp. alcohol
α -Terpineol	9.53	1208	0.07	0.19	1621	12.00*	Monoterp. alcohol
Eugenol	18.70	1376	83.54	84.22	2060	36.65	Phenylpropanoid
β -Elemene	19.16	1383	0.19	[6.33]	1530	8.90*	Sesquiterpene
α -Gurjunene	19.85	1394	0.12	0.11	1469	7.48	Sesquiterpene
β -Caryophyllene	20.90	1408	6.05	[6.33]	1530	8.90*	Sesquiterpene
Aromadendrene	22.02*	1421	5.26	[6.33]	1530	8.90*	Sesquiterpene
Methyleugenol	22.02*	1421	[5.26]	5.05	1934	30.25	Phenylpropanoid
α -Humulene	23.61	1440	1.05	1.05	1587	10.78	Sesquiterpene
allo-Aromadendrene	23.84	1443	0.22	0.21	1569	10.11	Sesquiterpene
γ -Selinene	25.28	1460	0.20	0.15	1601	11.27	Sesquiterpene
δ -Selinene	26.23	1472	0.06				Sesquiterpene
β -Selinene	26.41	1474	0.37	0.33	1634	12.45	Sesquiterpene
Viridiflorene	26.61	1476	0.14	[0.19]	1621	12.00*	Sesquiterpene
α -Selinene	27.05	1482	0.46	0.43	1643	12.80	Sesquiterpene
α -Muurolene	27.81	1491	0.06	0.05	1656	13.35	Sesquiterpene
γ -Cadinene	28.87	1504	0.06	0.05	1676	14.36	Sesquiterpene
δ -Cadinene	29.51	1513	0.21	0.19	1682	14.60	Sesquiterpene
Caryophyllene oxide	33.93	1574	0.10	0.09	1859	25.03	Sesquiterp. ether
α -Cadinol	38.14	1658	0.20	0.14	2139	39.21	Sesquiterp. alcohol
Total identified			99.22%	99.32%			

*: Two or more compounds are coeluting on this column

[xx]: Duplicate percentage due to coelutions, not taken account in the identified total

Note: no correction factor was applied

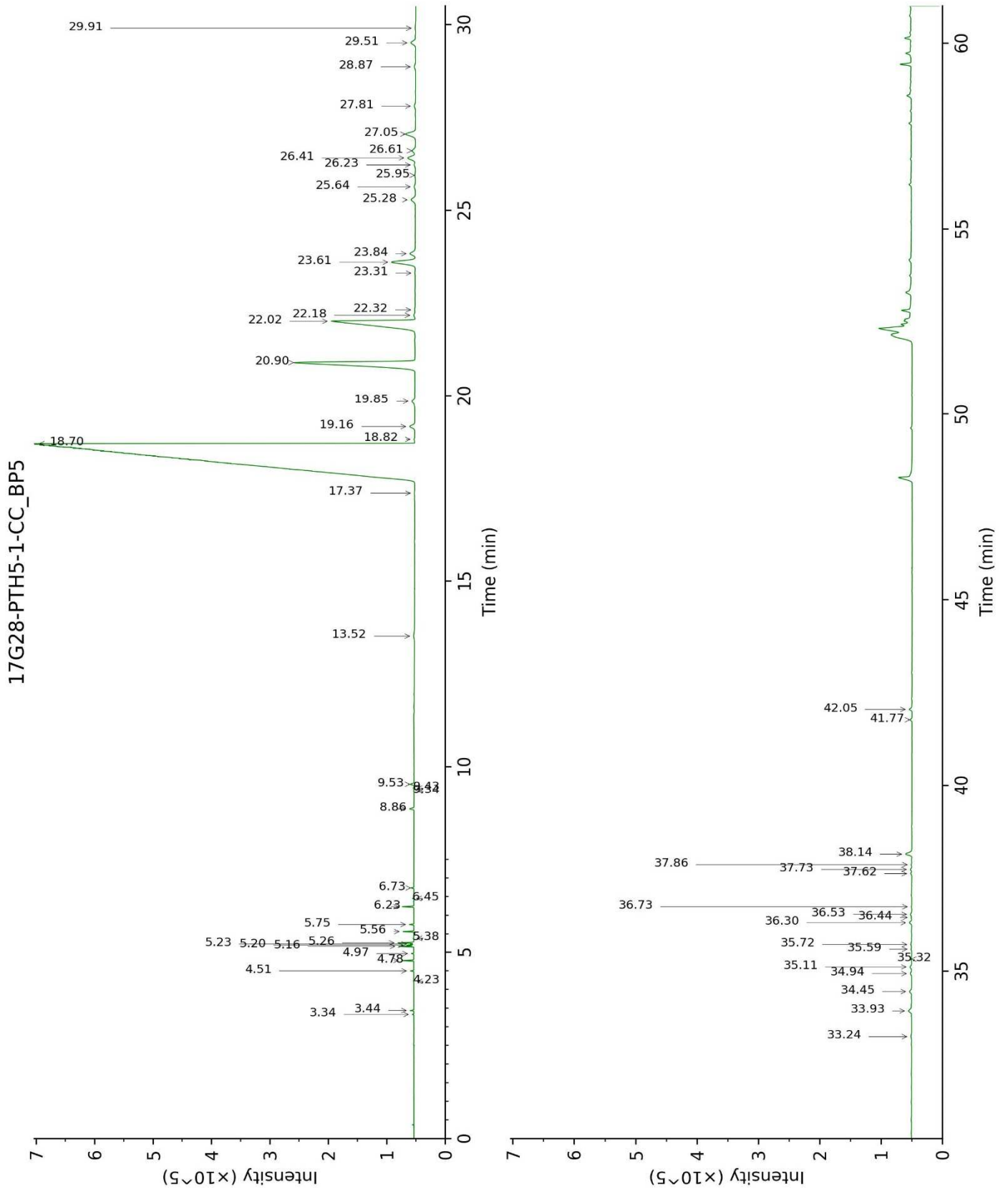
OTHER DATA

Physical aspect : Yellow liquid

Refractive index : 1.5345 ± 0.0003 (20 °C)

CONCLUSION

No adulterant, contaminant or diluent were detected using this method.



17G28-PTH5-1-CC_WAX

