

Date : 2025-02-10

CERTIFICATE OF ANALYSIS - GC PROFILING

SAMPLE IDENTIFICATION

Internal code : 25A27-PTH04

Customer Identification : Tea Tree - Australia - T20115R

Type : Essential Oil

Source : *Melaleuca alternifolia* ct. *Terpinen-4-ol* (Tea Tree)

Customer : Plant Therapy

Checked and approved by:

Sylvain Mercier, M. Sc., Chimiste 2014-005

Notes: This report may not be published, including online, without the written consent from Laboratoire PhytoChemia. This report is digitally signed, it is only considered valid if the digital signature is intact. The results only describe the samples that were submitted to the assays.

GAS CHROMATOGRAPHIC ANALYSIS

Method : PC-MAT-014 - Analysis of the composition of an essential oil or other volatile liquide by FAST GC-FID

***ISO**

Results : See analysis summary (next page)

Analyst : Sylvain Mercier, M. Sc., Chimiste 2014-005

Date : 2025-01-29

PHYSICOCHEMICAL DATA

Refractive index : 1.4775 ± 0.0003 (20 °C)

Method : PC-MAT-016 - Measure of the refractive index of a liquid.

Analyst : Cindy Caron B. Sc.

Date : 2025-01-28

CONCLUSION

No adulterant, contaminant or diluent has been detected using this method.

ANALYSIS SUMMARY - CONSOLIDATED CONTENTS

New readers of similar reports are encouraged to read table footnotes at least once.

Identification	%	Class
Ethanol	0.20	Aliphatic alcohol
Isobutyral	0.02	Aliphatic aldehyde
Isobutanol	tr	Aliphatic alcohol
Isovaleral	tr	Aliphatic aldehyde
2-Methylbutyral	0.01	Aliphatic aldehyde
Isoamyl alcohol	0.01	Aliphatic alcohol
2-Methylbutanol	tr	Aliphatic alcohol
Prenol	0.01	Aliphatic alcohol
(3Z)-Hexenol	0.02	Aliphatic alcohol
α -Thujene	0.91	Monoterpene
α -Pinene	2.45	Monoterpene
α -Fenchene	tr	Monoterpene
Camphene	0.02	Monoterpene
Sabinene	0.08	Monoterpene
β -Pinene	0.73	Monoterpene
3-Methyl-3-cyclohexenone	0.02	Aliphatic ketone
Myrcene	0.81	Monoterpene
Pseudolimonene	0.02	Monoterpene
α -Phellandrene	0.44	Monoterpene
<i>cis</i> -Dehydroxylinalool oxide	0.01	Monoterpenic ether
α -Terpinene	8.69	Monoterpene
Carvomenthene	0.02	Aliphatic alcohol
<i>para</i> -Cymene	2.86	Monoterpene
1,8-Cineole	2.59	Monoterpenic ether
Limonene	0.91	Monoterpene
β -Phellandrene	0.80	Monoterpene
(Z)- β -Ocimene	0.01	Monoterpene
(E)- β -Ocimene	0.02	Monoterpene
γ -Terpinene	19.91	Monoterpene
<i>cis</i> -Sabinene hydrate	0.03	Monoterpenic alcohol
Isoterpinolene	0.01	Monoterpene
Terpinolene	3.21	Monoterpene
<i>para</i> -Cymenene	0.06	Monoterpene
<i>trans</i> -Sabinene hydrate	0.02	Monoterpenic alcohol
Linalool	0.07	Monoterpenic alcohol
endo-Fenchol	0.01	Monoterpenic alcohol
<i>cis-para</i> -Menth-2-en-1-ol	0.17	Monoterpenic alcohol
4-Hydroxy-4-methylcyclohex-2-enone	0.02	Aliphatic alcohol
Cosmene isomer I	0.02	Monoterpene
<i>trans</i> -Pinocarveol	0.03	Monoterpenic alcohol

<i>trans-para</i> -Menth-2-en-1-ol	0.16	Monoterpenic alcohol
Unknown	0.01	Unknown
δ -Terpineol	0.03	Monoterpenic alcohol
Terpinen-4-ol	42.86	Monoterpenic alcohol
Dill ether	tr	Monoterpenic ether
<i>para</i> -Cymen-8-ol	0.07	Monoterpenic alcohol
α -Terpineol	3.15	Monoterpenic alcohol
<i>cis</i> -Piperitol	0.07	Monoterpenic alcohol
<i>trans</i> -Piperitol	0.12	Monoterpenic alcohol
<i>exo</i> -2-Hydroxycineole	0.04	Monoterpenic alcohol
Nerol	0.03	Monoterpenic alcohol
Unknown	0.03	Oxygenated monoterpene
Piperitone	0.04	Monoterpenic ketone
<i>cis</i> -Carvenone oxide?	0.01	Monoterpenic ketone
<i>trans</i> -Ascaridole glycol	0.08	Monoterpenic alcohol
<i>cis</i> -Ascaridole glycol	0.06	Monoterpenic alcohol
Unknown	0.02	Unknown
Unknown	0.01	Unknown
Thymol	0.01	Monoterpenic alcohol
Unknown	0.03	Unknown
Carvacrol	0.01	Monoterpenic alcohol
Unknown	0.10	Monoterpenic alcohol
Bicycloelemene	0.01	Sesquiterpene
α -Cubebene	0.05	Sesquiterpene
Unknown	0.02	Unknown
Unknown	0.03	Unknown
Isoledene	0.07	Sesquiterpene
α -Copaene	0.10	Sesquiterpene
7-Cubebene	0.05	Sesquiterpene
7-Cubebene epimer?	0.02	Aliphatic alcohol
β -Elemene	0.03	Sesquiterpene
Unknown	0.03	Sesquiterpene
Methyleugenol	0.03	Phenylpropanoid
α -Gurjunene	0.30	Sesquiterpene
β -Maaliene	0.01	Sesquiterpene
β -Caryophyllene	0.30	Sesquiterpene
γ -Maaliene	0.07	Sesquiterpene
β -Gurjunene	0.02	Sesquiterpene
α -Maaliene	0.07	Sesquiterpene
Aromadendrene	0.86	Sesquiterpene
Selina-5,11-diene	0.13	Sesquiterpene
Cadina-3,5-diene isomer I?	0.13	Sesquiterpene
<i>trans</i> -Muurolo-3,5-diene	0.08	Sesquiterpene
α -Humulene	0.09	Sesquiterpene
allo-Aromadendrene	0.46	Sesquiterpene

Valerena-4,7(11)-diene	0.04	Sesquiterpene
γ -Gurjunene	0.05	Sesquiterpene
<i>trans</i> -Cadina-1(6),4-diene	0.22	Sesquiterpene
γ -Muurolene	0.01	Sesquiterpene
Selina-4,11-diene	0.02	Sesquiterpene
β -Selinene	0.10	Sesquiterpene
allo-Aromadendr-9-ene	0.08	Sesquiterpene
<i>trans</i> -Muurolo-4(15),5-diene	0.01	Sesquiterpene
δ -Selinene	0.05	Sesquiterpene
α -Selinene	0.01	Sesquiterpene
Viridiflorene	0.84	Sesquiterpene
Bicyclogermacrene	0.34	Sesquiterpene
α -Muurolene	0.13	Sesquiterpene
γ -Cadinene	0.03	Sesquiterpene
Zonarene	0.19	Sesquiterpene
δ -Cadinene	0.88	Sesquiterpene
<i>trans</i> -Calamenene	0.11	Sesquiterpene
<i>trans</i> -Cadina-1,4-diene	0.15	Sesquiterpene
α -Calacorene	0.02	Sesquiterpene
Epiglobulol	0.05	Sesquiterpenic alcohol
Eudesma-5,7(11)-diene	0.02	Sesquiterpene
Maaliol	0.03	Sesquiterpenic alcohol
Palustrol	0.02	Sesquiterpenic alcohol
Unknown	0.02	Oxygenated sesquiterpene
Spathulenol	0.07	Sesquiterpenic alcohol
Globulol	0.20	Sesquiterpenic alcohol
Gleenol	0.02	Sesquiterpenic alcohol
Viridiflorol	0.10	Sesquiterpenic alcohol
Cubeban-11-ol	0.08	Sesquiterpenic alcohol
Ledol	0.06	Sesquiterpenic alcohol
Eudesm-5-en-11-ol analog	0.02	Sesquiterpenic alcohol
Rosifoliol	0.08	Sesquiterpenic alcohol
1-epi-Cubenol	0.12	Sesquiterpenic alcohol
Isospathulenol	0.07	Sesquiterpenic alcohol
Cubenol	0.07	Sesquiterpenic alcohol
α -Muurolol	0.02	Sesquiterpenic alcohol
Unknown	0.01	Oxygenated sesquiterpene
Consolidated total	99.45	

tr: The compound has been detected below 0.005% of the total signal

Note: no correction factor was applied

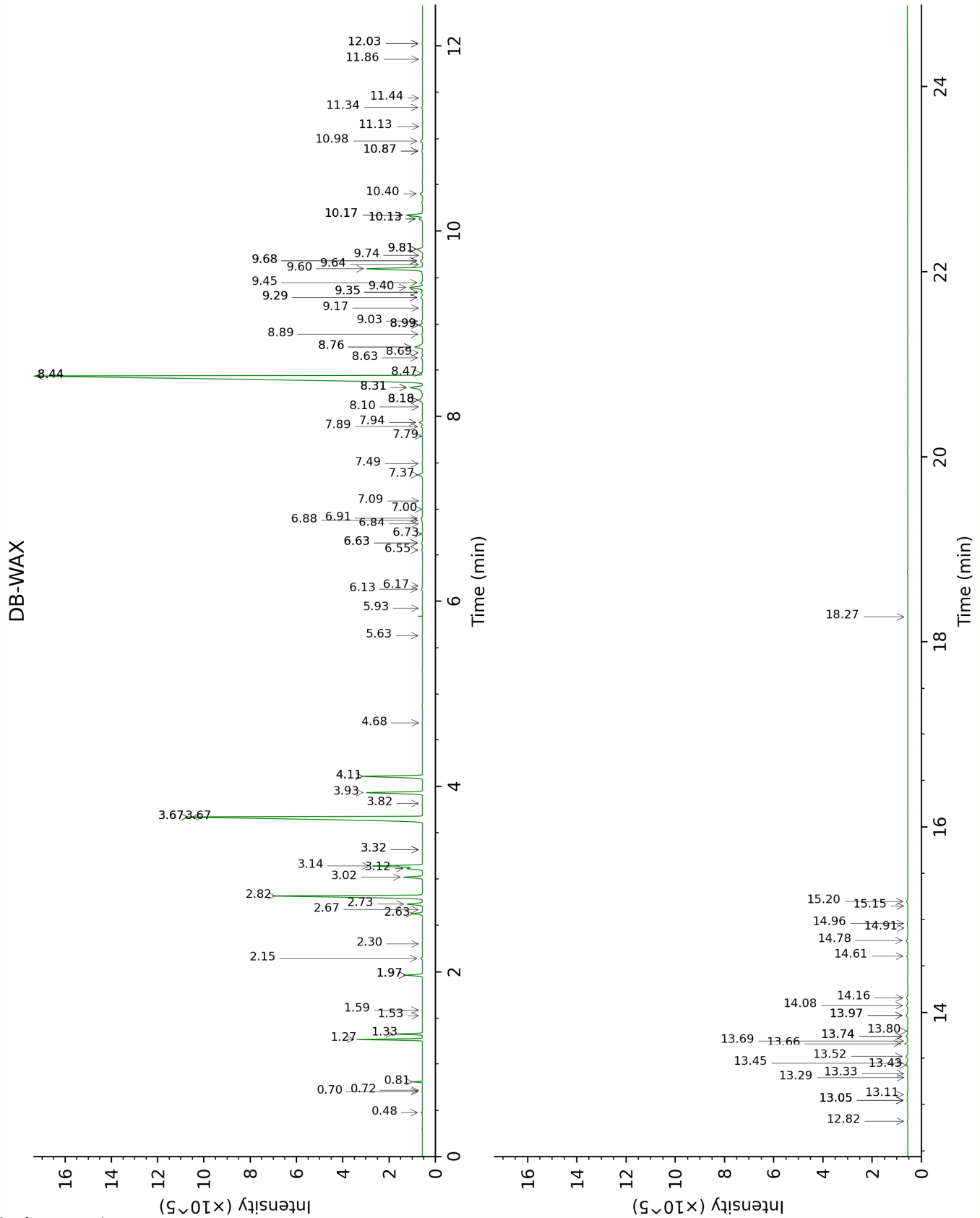
About "consolidated" data: The table above presents the breakdown of the sample volatile constituents after applying an algorithm to collapse data acquired from the multi-columns system of PhytoChemia into a single set of consolidated contents. In case of discrepancies between columns, the algorithm is set to prioritize data from the most standard DB-5 column, and smallest values so as to avoid overestimating individual content. This process is semi-automatic. Advanced users are invited to consult the "Full analysis data" table after the chromatograms in this report to access the full untreated data and perform their own calculations if needed.

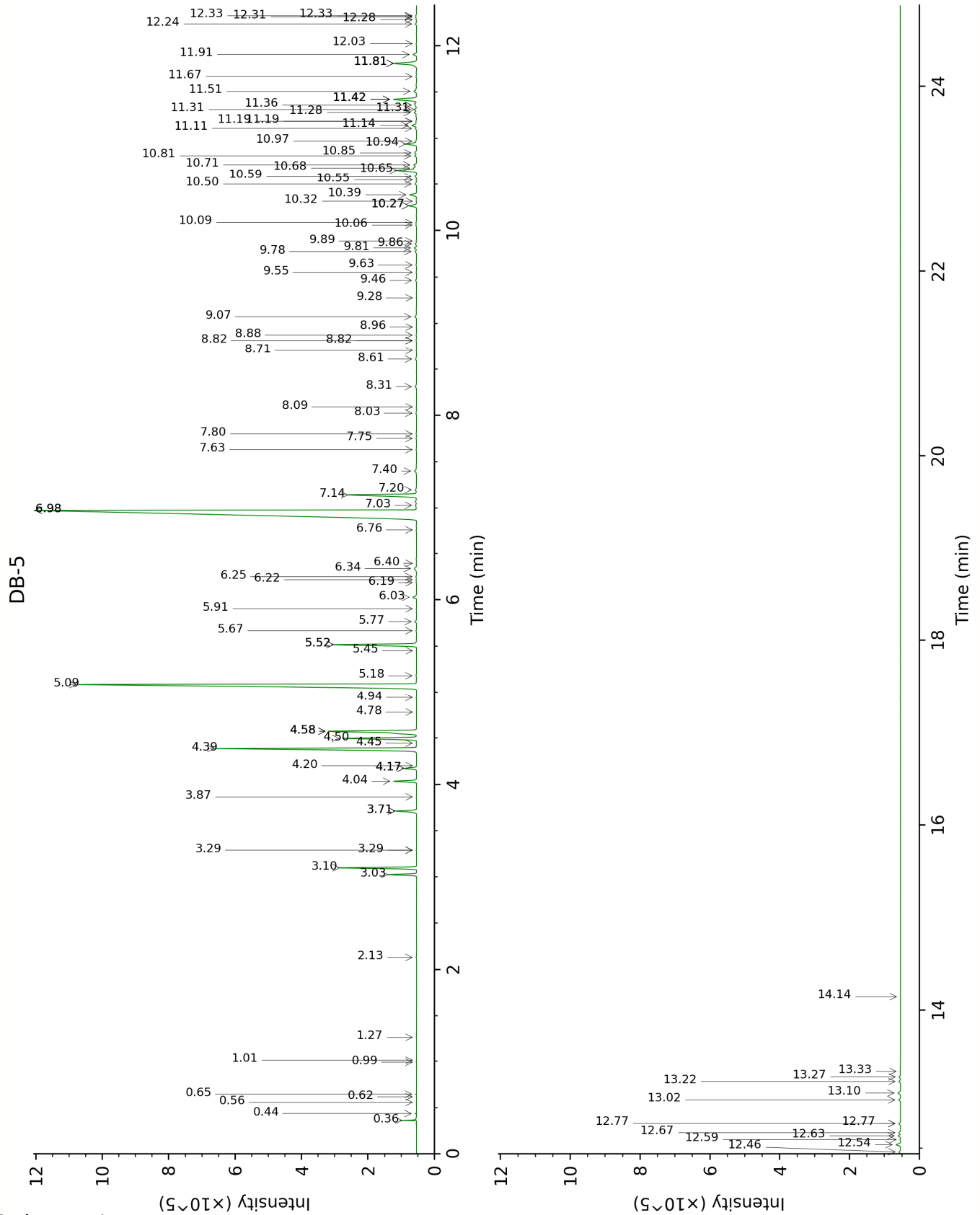
Unknowns: Unknown compounds' mass spectral data is presented in the "Full analysis data" table. The occurrence of unknown compounds is

to be expected in many samples, and does not denote particular problems unless noted otherwise in the conclusion.

Bracketed value ([xx]): A bracketed percent value indicate that two or more compound percentage could not be solved due to coelution.

This page was intentionally left blank. The following pages present the complete data of the analysis.





FULL ANALYSIS DATA

Ethanol	Column DB-WAX			Column DB-5		
	0.81	911.7	0.22	0.36	502.2	0.20
Isobutylal	0.48	782.9	0.02	0.44	536.8	0.02
Isobutanol	1.97*	1065.6	[0.74]	0.56	620.5	tr
Isovaleral	0.72	888.5	tr	0.62	641.3	tr
2-Methylbutylal	0.70	882.4	0.01	0.65	651.6	0.01
Isoamyl alcohol	3.32*	1181.1	[0.02]	0.99	733.3	0.01
2-Methylbutanol	3.32*	1181.1	[0.02]	1.01	736.2	tr
Prenol	4.68	1284.0	0.01	1.27	772.5	0.01
(3Z)-Hexenol	5.63	1352.0	0.04	2.13	858.2	0.02
α -Thujene	1.33	1001.1	0.91	3.03	927.2	0.91
α -Pinene	1.27	991.2	2.45	3.10	932.1	2.45
α -Fenchene	1.53	1021.3	tr	3.29*	944.7	[0.02]
Camphene	1.59	1027.4	0.02	3.29*	944.7	[0.02]
Sabinene	2.15	1083.9	0.08	3.71*	972.7	[0.80]
β -Pinene	1.97*	1065.6	[0.74]	3.71*	972.7	[0.80]
3-Methyl-3-cyclohexenone	5.93	1373.2	0.02	3.87	982.8	0.02
Myrcene	2.73	1134.4	0.82	4.04	994.0	0.81
Pseudolimonene	2.67	1129.6	0.02	4.17*	1003.2	[0.45]
α -Phellandrene	2.63	1126.2	0.44	4.17*	1003.2	[0.45]
<i>cis</i> -Dehydroxylinalool oxide	3.67*	1208.9	[19.88]	4.20	1005.1	0.01
α -Terpinene	2.82	1141.4	8.71	4.39	1016.8	8.69
Carvomenthene	2.30	1099.8	0.02	4.45	1020.4	0.02
<i>para</i> -Cymene	3.93	1228.3	2.87	4.50	1023.6	2.86
1,8-Cineole	3.14	1167.2	2.59	4.58*	1028.4	[4.29]
Limonene	3.02	1157.5	0.91	4.58*	1028.4	[4.29]
β -Phellandrene	3.12	1165.0	0.80	4.58*	1028.4	[4.29]
(Z)- β -Ocimene	3.67*	1208.9	[19.88]	4.78	1041.4	0.01
(E)- β -Ocimene	3.82	1219.6	0.02	4.94	1051.5	0.02
γ -Terpinene	3.67*	1208.9	[19.88]	5.09	1060.5	19.91
<i>cis</i> -Sabinene hydrate	6.73	1431.7	0.02	5.18	1066.4	0.03
Isoterpinolene	4.11*	1241.3	[3.22]	5.45	1083.4	0.01
Terpinolene	4.11*	1241.3	[3.22]	5.52*	1087.5	[3.28]
<i>para</i> -Cymenene	6.13	1388.0	0.06	5.52*	1087.5	[3.28]
<i>trans</i> -Sabinene hydrate	7.79	1511.1	0.03	5.67	1096.9	0.02
Linalool	7.89	1519.2	0.07	5.77	1103.1	0.07
endo-Fenchol	8.18*	1541.4	[0.40]	5.91	1111.9	0.01
<i>cis-para</i> -Menth-2-en-1-ol	7.94	1522.7	0.17	6.03	1119.8	0.17

4-Hydroxy-4-methylcyclohex-2-enone	13.80	2025.6	0.04	6.19	1129.9	0.02
Cosmene isomer I	6.17	1390.6	0.03	6.22	1131.9	0.02
<i>trans</i> -Pinocarveol	8.99*	1605.0	[0.20]	6.25	1134.0	0.03
<i>trans-para</i> -Menth-2-en-1-ol	8.76*†	1586.4	[0.49]	6.34	1139.7	0.16
Unknown MEAL II [m/z 109, 124 (45), 119 (41), 43 (35), 91 (28), 95 (25)...]	6.63*	1424.6	[0.07]	6.40	1143.2	0.01
δ-Terpineol	9.29*	1629.0	[0.13]	6.76	1166.2	0.03
Terpinen-4-ol	8.44*	1561.5	[42.66]	6.98*	1180.2	[42.86]
Dill ether	7.09	1458.8	tr	6.98*	1180.2	[42.86]
<i>para</i> -Cymen-8-ol	11.34	1800.1	0.06	7.03	1183.7	0.07
α-Terpineol	9.60	1654.0	3.20	7.14	1190.9	3.15
<i>cis</i> -Piperitol	9.34*	1633.5	[0.08]	7.20	1194.4	0.07
<i>trans</i> -Piperitol	10.17*	1700.8	[1.00]	7.40	1207.4	0.12
exo-2-Hydroxycineole	11.44	1809.0	0.02	7.63	1222.8	0.04
Nerol	10.87*	1760.0	[0.05]	7.75	1231.0	0.03
Unknown CIAU II [m/z 137, 152 (28), 43 (25), 91 (24), 109 (23), 119 (19)]	11.13	1782.5	0.01	7.80	1234.2	0.03
Piperitone	9.68*	1660.9	[0.12]	8.03	1249.2	0.04
<i>cis</i> -Carvenone oxide?				8.09	1253.7	0.01
<i>trans</i> -Ascaridole glycol	13.97*	2041.9	[0.13]	8.31	1268.4	0.08
<i>cis</i> -Ascaridole glycol	14.61	2104.0	0.06	8.61	1288.3	0.06
Unknown CICA V [m/z 95, 110 (95), 67 (31), 43 (29), 122 (18), 41 (14)...]	12.03*	1861.3	[0.04]	8.71	1294.7	0.02
Unknown CICA VI [m/z 112, 97 (93), 83 (60), 43 (46), 41 (20), 69 (19)...]	13.69	2015.2	0.01	8.82*	1302.1	[0.03]
Thymol	14.91	2134.5	0.01	8.82*	1302.1	[0.03]
Unknown CASA XVII [m/z 93, 111 (86), 43 (70), 110 (55), 59 (53), 69	13.29	1977.1	0.01	8.88	1306.1	0.03

(52), 41 (47)...						
Carvacrol	15.15	2158.3	0.02	8.96	1312.2	0.01
Unknown MEAL I [m/z 97, 112 (92), 83 (62), 43 (44), 41 (25)... 170? (4)]	14.78	2120.9	0.11	9.07	1320.1	0.10
Bicycloelemene	6.84	1439.9	0.01	9.28	1334.4	0.01
α -Cubebene	6.55	1418.8	0.05	9.46	1347.6	0.05
Unknown MISC CVI [m/z 111, 55 (54), 43 (46), 129 (39), 71 (36)...				9.55	1353.8	0.02
Unknown EUGL I [m/z 43, 95 (62), 107 (45), 110 (41), 55 (28), 67 (25)...	13.74*	2020.1	[0.11]	9.63	1359.3	0.03
Isoledene	6.63*	1424.6	[0.07]	9.78	1369.5	0.07
α -Copaene	6.90	1445.0	0.10	9.81	1372.2	0.10
7-Cubebene	6.88	1443.3	0.04	9.86	1375.4	0.05
7-Cubebene epimer?	7.00	1452.1	0.02	9.89	1377.5	0.02
β -Elemene	8.18*	1541.4	[0.40]	10.06	1389.5	0.03
Unknown EUGL IV [m/z 93, 122 (98), 161 (98), 107 (86), 95 (46), 105 (72)... 204 (34)]				10.09	1391.4	0.03
Methyleugenol	13.05*	1954.5	[0.05]	10.27*	1404.3	[0.33]
α -Gurjunene	7.37	1479.7	0.30	10.27*	1404.3	[0.33]
β -Maaliene	7.49	1488.7	0.04	10.32	1407.8	0.01
β -Caryophyllene	8.18*	1541.4	[0.40]	10.39	1413.0	0.30
γ -Maaliene	8.31*	1551.9	[1.02]	10.50	1421.7	0.07
β -Gurjunene	8.10	1535.6	0.02	10.55	1425.1	0.02
α -Maaliene	8.47	1564.0	0.06	10.58	1427.8	0.07
Aromadendrene	8.31*	1551.9	[1.02]	10.66	1433.0	0.86
Selina-5,11-diene	8.44*	1561.5	[42.66]	10.68	1434.8	0.13
Cadina-3,5-diene isomer I?				10.72	1437.5	0.13
<i>trans</i> -Muurola-3,5- diene	8.63	1576.7	0.08	10.81	1444.8	0.08
α -Humulene	9.03	1608.2	0.07	10.84	1447.2	0.09
allo- Aromadendrene	8.76*†	1586.4	[0.49]	10.94	1454.4	0.46
Valerena-4,7(11)- diene	8.69	1581.0	0.03	10.97	1456.6	0.04

γ -Gurjunene	8.89	1597.0	0.07	11.11	1466.9	0.05
<i>trans</i> -Cadina-1(6),4-diene	8.99*	1605.0	[0.20]	11.14	1469.2	0.22
γ -Muurokene	9.34*	1633.5	[0.08]	11.19*	1472.6	[0.03]
Selina-4,11-diene	9.17	1619.6	0.02	11.19*	1472.6	[0.03]
β -Selinene	9.68*	1660.9	[0.12]	11.28	1479.7	0.10
allo-Aromadendr-9-ene	9.29*	1629.0	[0.13]	11.31*	1482.0	[0.09]
<i>trans</i> -Muurokene-4(15),5-diene	9.64	1657.8	0.01	11.31*	1482.0	[0.09]
δ -Selinene	9.45	1641.8	0.10	11.36	1485.6	0.05
α -Selinene	9.74	1665.8	0.01	11.42*	1490.2	[1.19]
Viridiflorene	9.40	1637.7	0.84	11.42*	1490.2	[1.19]
Bicyclogermacrene	9.81*	1671.0	[0.46]	11.42*	1490.2	[1.19]
α -Muurokene	9.81*	1671.0	[0.46]	11.51	1496.7	0.13
γ -Cadinene	10.13*	1697.5	[0.22]	11.67	1508.7	0.03
Zonarene	10.13*	1697.5	[0.22]	11.81*	1519.9	[1.21]
δ -Cadinene	10.17*	1700.8	[1.00]	11.81*	1519.9	[1.21]
<i>trans</i> -Calamenene	10.98	1769.2	0.11	11.81*	1519.9	[1.21]
<i>trans</i> -Cadina-1,4-diene	10.40	1720.3	0.16	11.91	1527.4	0.15
α -Calacorene	11.86	1846.3	0.03	12.02	1536.7	0.02
Epiglobulol	13.05*	1954.5	[0.05]	12.24	1553.3	0.05
Eudesma-5,7(11)-diene	10.87*	1760.0	[0.05]	12.28	1556.9	0.02
Maaliol	12.82	1933.5	0.03	12.31	1559.3	0.03
Palustrol	12.03*	1861.3	[0.04]	12.33*	1560.3	[0.04]
Unknown MEAL III [m/z 161, 109 (98), 82 (93), 43 (72), 105 (68), 93 (59), 69 (56), 119 (55)... 222 (7)]	13.05*	1954.5	[0.05]	12.33*	1560.3	[0.04]
Spathulenol	14.16	2060.2	0.09	12.46	1570.6	0.07
Globulol	13.66	2012.2	0.19	12.54	1576.9	0.20
Gleenol	13.33	1981.2	0.02	12.59	1581.2	0.02
Viridiflorol	13.74*	2020.1	[0.11]	12.63	1584.4	0.10
Cubeban-11-ol	13.45	1991.7	0.08	12.67	1587.1	0.08
Ledol	13.11	1960.3	0.06	12.77*	1594.8	[0.08]
Eudesm-5-en-11-ol analog	13.97*	2041.9	[0.13]	12.77*	1594.8	[0.08]
Rosifoliol	14.08	2052.2	0.08	13.02	1615.4	0.08
1-epi-Cubenol	13.52	1998.5	0.13	13.10	1621.6	0.12
Isospathulenol	15.20	2163.2	0.07	13.22	1631.8	0.07
Cubenol	13.43	1989.7	0.05	13.27	1636.0	0.07

α -Muurolol	14.96	2139.3	0.05	13.33	1640.8	0.02
Unknown KUER IX [m/z 43, 93 (44), 162 (39), 107 (39), 121 (34), 95 (32)...220 (7)]	18.27	2494.7	0.01	14.14	1708.3	0.01
Total reported	99.18%			99.47%		

*: Two or more compounds are coeluting on this column

[xx]: Duplicate percentage due to coelutions, only the first one is taken into account in the consolidated total

†: Peaks apexes were resolved, but peaks overlapped and were summed for analysis

tr: The compound has been detected below 0.005% of total signal.

Note: no correction factor was applied

R.T.: Retention time (minutes)

R.I.: Retention index