

Date : 2024-01-11

CERTIFICATE OF ANALYSIS - GC PROFILING

SAMPLE IDENTIFICATION

Internal code : 24A04-PTH02

Customer Identification : Organic Juniper Berry - Bulgaria - J50107R

Type : Essential Oil

Source : *Juniperus communis*

Customer : Plant Therapy

Checked and approved by:

Alexis St-Gelais, Ph. D., Chimiste 2013-174

Notes: This report may not be published, including online, without the written consent from Laboratoire PhytoChemia. This report is digitally signed, it is only considered valid if the digital signature is intact. The results only describe the samples that were submitted to the assays.

GAS CHROMATOGRAPHIC ANALYSIS

Method : PC-MAT-014 - Analysis of the composition of an essential oil or other volatile liquide by FAST GC-FID

✖ISO

Results : See analysis summary (next page)

Analyst : Alexis St-Gelais, Ph. D., Chimiste 2013-174

Date : 2024-01-11

PHYSICOCHEMICAL DATA

Refractive index : 1.4754 ± 0.0003 (20 °C)

Method : PC-MAT-016 - Measure of the refractive index of a liquid.

Analyst : Cindy Caron B. Sc.

Date : 2024-01-04

CONCLUSION

No adulterant, contaminant or diluent has been detected using this method.

ANALYSIS SUMMARY - CONSOLIDATED CONTENTS

New readers of similar reports are encouraged to read table footnotes at least once.

Identification	%	Class
Toluene	0.01	Simple phenolic
Hexanal	0.01	Aliphatic aldehyde
Unknown	tr	Alkene
(2E)-Hexenal	0.02	Aliphatic aldehyde
Hexanol	0.02	Aliphatic alcohol
Bornylene	0.01	Monoterpene
Tricyclene	0.11	Monoterpene
α -Thujene	1.29	Monoterpene
α -Pinene	43.92	Monoterpene
α -Fenchene	0.06	Monoterpene
Camphene	0.37	Monoterpene
Thuja-2,4(10)-diene	0.05	Monoterpene
3,7,7-Trimethylcyclohepta-1,3,5-triene	0.02	Monoterpene
Sabinene	6.15	Monoterpene
β -Pinene	2.51	Monoterpene
6-Methyl-5-hepten-2-one	0.02	Aliphatic ketone
Myrcene	10.49	Monoterpene
2-Carene	0.07	Monoterpene
Pseudolimonene	0.02	Monoterpene
α -Phellandrene	0.37	Monoterpene
Δ^3 -Carene	0.26	Monoterpene
1,4-Cineole	0.01	Monoterpenic ether
α -Terpinene	1.19	Monoterpene
<i>meta</i> -Cymene	0.80	Monoterpene
1,8-Cineole	[1.19]	Monoterpenic ether
β -Phellandrene	[1.19]	Monoterpene
Limonene	4.68	Monoterpene
(Z)- β -Ocimene	0.01	Monoterpene
(E)- β -Ocimene	0.11	Monoterpene
γ -Terpinene	2.05	Monoterpene
<i>cis</i> -Sabinene hydrate	0.03	Monoterpenic alcohol
Unknown	0.03	Oxygenated monoterpene
<i>cis</i> -Linalool oxide (fur.)	0.01	Monoterpenic alcohol
<i>meta</i> -Cymenene	0.01	Monoterpene
Terpinolene	1.54	Monoterpene
α -Pinene oxide	tr	Monoterpenic ether
6,7-Epoxyterpinene	0.01	Monoterpenic ether
<i>trans</i> -Sabinene hydrate	0.03	Monoterpenic alcohol
Linalool	0.11	Monoterpenic alcohol
endo-Fenchol	0.05	Monoterpenic alcohol

<i>cis-para</i> -Menth-2-en-1-ol	0.04	Monoterpenic alcohol
α -Campholenal	0.04	Monoterpenic aldehyde
<i>trans</i> -Pinocarveol	0.05	Monoterpenic alcohol
<i>cis</i> -Verbenol	0.01	Monoterpenic alcohol
Camphene hydrate	0.02	Monoterpenic alcohol
Epoxyterpinolene	0.01	Monoterpenic ether
<i>meta</i> -Mentha-4,6-dien-8-ol	0.02	Monoterpenic alcohol
Citronellal	0.03	Monoterpenic aldehyde
Pinocamphone	0.02	Monoterpenic ketone
Borneol	0.07	Monoterpenic alcohol
α -Phellandren-8-ol	0.05	Monoterpenic alcohol
Terpinen-4-ol	2.09	Monoterpenic alcohol
<i>para</i> -Cymen-8-ol	0.03	Monoterpenic alcohol
Myrtenal	0.09	Monoterpenic aldehyde
α -Terpineol	0.30	Monoterpenic alcohol
Myrtenol	0.06	Monoterpenic alcohol
<i>trans</i> -Isopiperitenol	0.01	Monoterpenic alcohol
Verbenone	0.03	Monoterpenic ketone
Decanal	0.02	Aliphatic aldehyde
<i>trans</i> -Carveol	0.01	Monoterpenic alcohol
<i>cis</i> -Carveol	0.01	Monoterpenic alcohol
Thymol methyl ether	0.05	Monoterpenic ether
Citronellol	0.05	Monoterpenic alcohol
Carvacrol methyl ether	0.02	Monoterpenic ether
Piperitone	0.03	Monoterpenic ketone
Geraniol	0.01	Monoterpenic alcohol
Methyl citronellate	0.07	Monoterpenic ester
Geranial	0.03	Monoterpenic aldehyde
<i>trans</i> -Ascaridole glycol	0.02	Monoterpenic alcohol
Decanol	0.03	Aliphatic alcohol
Bornyl acetate	0.26	Monoterpenic ester
2-Undecanone	0.06	Aliphatic ketone
Myrtenyl acetate	0.02	Monoterpenic ester
Terpinyl acetate analog	0.02	Monoterpenic ester
α -Cubebene	0.34	Sesquiterpene
α -Terpinyl acetate	0.09	Monoterpenic ester
Citronellyl acetate	0.02	Monoterpenic ester
α -Ylangene	0.06	Sesquiterpene
α -Copaene	0.45	Sesquiterpene
<i>cis</i> - β -Elemene	0.03	Sesquiterpene
<i>trans</i> -Myrtanyl acetate	0.04	Monoterpenic ester
Geranyl acetate	0.02	Monoterpenic ester
β -Cubebene	0.04	Sesquiterpene
β -Elemene	0.96	Sesquiterpene
α -Funebrene	0.03	Sesquiterpene

Sibirene	0.26	Sesquiterpene
Longifolene	0.05	Sesquiterpene
α -Gurjunene	0.03	Sesquiterpene
β -Ylangene	0.06	Sesquiterpene
β -Caryophyllene	2.76	Sesquiterpene
β -Copaene	0.14	Sesquiterpene
γ -Elemene	0.35	Sesquiterpene
<i>trans</i> - α -Bergamotene	0.08	Sesquiterpene
α -Himachalene	0.02	Sesquiterpene
α -Humulene	1.99	Sesquiterpene
allo-Aromadendrene	0.01	Sesquiterpene
(<i>E</i>)- β -Farnesene	0.50	Sesquiterpene
<i>trans</i> -Cadina-1(6),4-diene	0.21	Sesquiterpene
γ -Muurolene	0.60	Sesquiterpene
Germacrene D	1.48	Sesquiterpene
β -Selinene	0.35	Sesquiterpene
γ -Amorphene	0.08	Sesquiterpene
Bicyclogermacrene	0.09	Sesquiterpene
α -Selinene	0.32	Sesquiterpene
epi-Cubebol	0.01	Sesquiterpenic alcohol
Viridiflorene	0.06	Sesquiterpene
Cuparene	0.02	Sesquiterpene
α -Muurolene	0.48	Sesquiterpene
Germacrene A	tr	Sesquiterpene
γ -Cadinene	0.56	Sesquiterpene
(3 <i>E</i> ,6 <i>E</i>)- α -Farnesene	0.04	Sesquiterpene
δ -Cadinene	1.86	Sesquiterpene
<i>trans</i> -Calamenene	0.04	Sesquiterpene
Zonarene	0.13	Sesquiterpene
Selina-4(15),7(11)-diene	0.33	Sesquiterpene
Selina-4,7(11)-diene?	0.15	Sesquiterpene
α -Cadinene	0.11	Sesquiterpene
Selina-3,7(11)-diene	0.25	Sesquiterpene
α -Elemol	0.01	Sesquiterpenic alcohol
Germacrene B	0.76	Sesquiterpene
(<i>E</i>)-Nerolidol	0.06	Sesquiterpenic alcohol
Spathulenol	0.06	Sesquiterpenic alcohol
Caryophyllene oxide	0.12	Sesquiterpenic ether
Caryophyllene oxide isomer	0.02	Sesquiterpenic ether
Unknown	0.02	Oxygenated sesquiterpene
Humulene epoxide II	0.08	Sesquiterpenic ether
1,10-diepi-Cubenol	0.02	Sesquiterpenic alcohol
Junenol	0.03	Sesquiterpenic alcohol
τ -Cadinol	0.09	Sesquiterpenic alcohol
τ -Muurolol	0.09	Sesquiterpenic alcohol

α -Muurolol	0.05	Sesquiterpenic alcohol
α -Eudesmol	0.03	Sesquiterpenic alcohol
α -Cadinol	0.12	Sesquiterpenic alcohol
(3Z)-Caryophylla-3,8(13)-dien-5 β -ol	0.03	Sesquiterpenic alcohol
Germacra-4(15),5,10(14)-trien-1 α -ol	0.01	Sesquiterpenic alcohol
Juniper camphor	0.02	Sesquiterpenic alcohol
Aromadendrane-4,10-diol	0.02	Sesquiterpenic alcohol
<i>meta</i> -Camphorene	0.04	Diterpene
<i>para</i> -Camphorene	0.02	Diterpene
18-Norabieta-8,11,13-triene?	0.01	Norditerpene
ar-Abietatriene	0.01	Diterpene
Manool	0.01	Diterpenic alcohol
7,13-Abietadiene	0.01	Diterpene
Consolidated total	98.58	

tr: The compound has been detected below 0.005% of the total signal

Note: no correction factor was applied

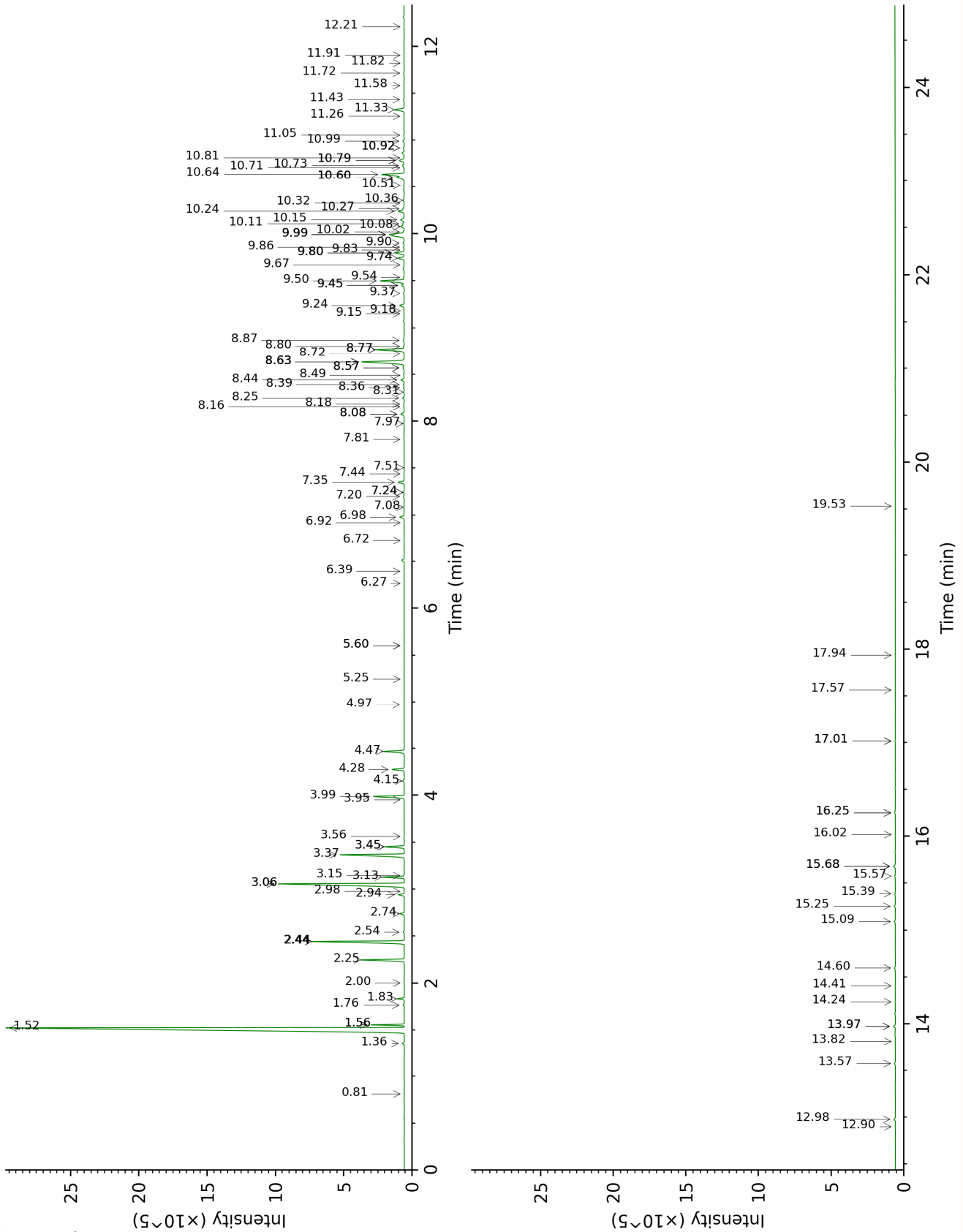
About "consolidated" data: The table above presents the breakdown of the sample volatile constituents after applying an algorithm to collapse data acquired from the multi-columns system of PhytoChemia into a single set of consolidated contents. In case of discrepancies between columns, the algorithm is set to prioritize data from the most standard DB-5 column, and smallest values so as to avoid overestimating individual content. This process is semi-automatic. Advanced users are invited to consult the "Full analysis data" table after the chromatograms in this report to access the full untreated data and perform their own calculations if needed.

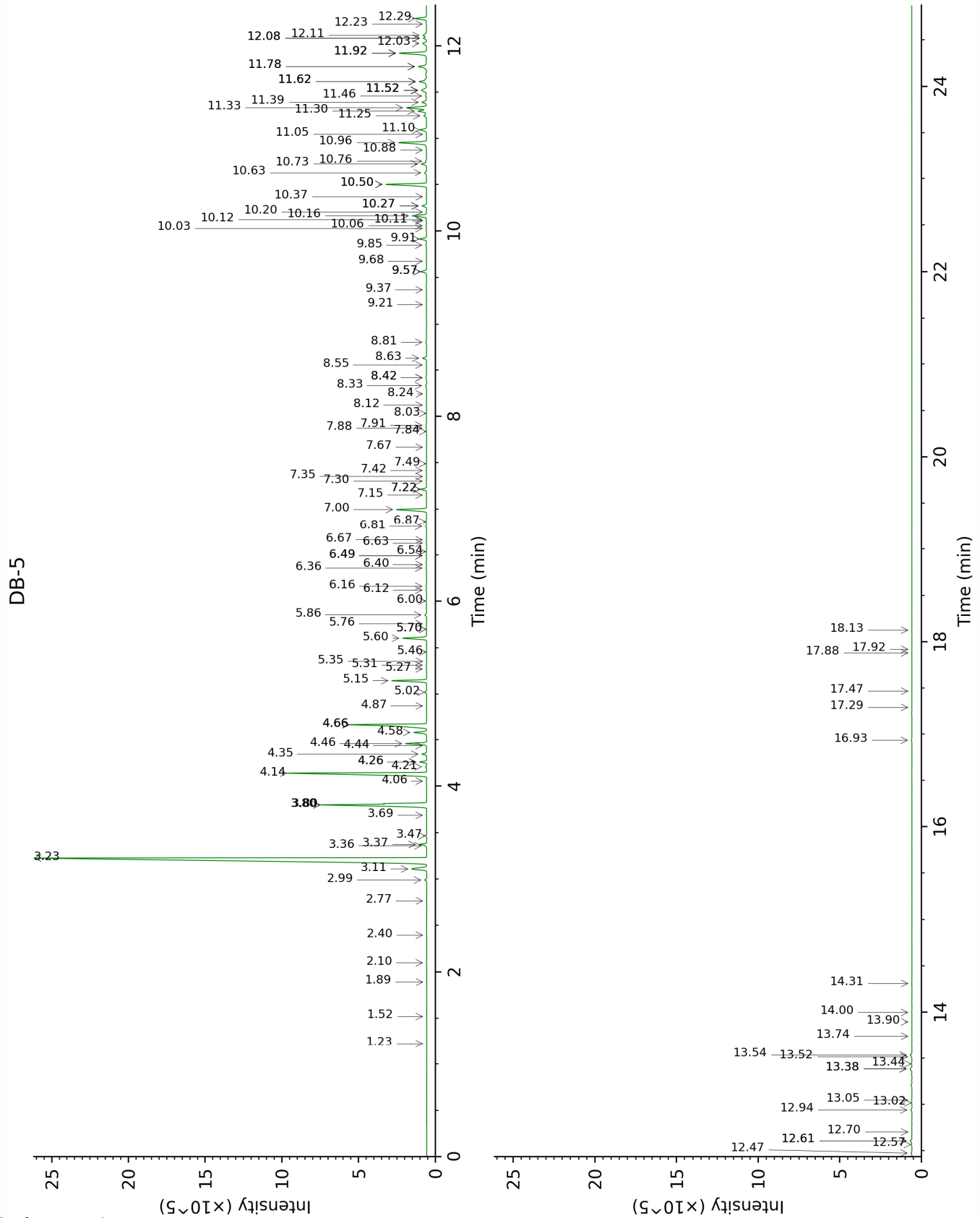
Unknowns: Unknown compounds' mass spectral data is presented in the "Full analysis data" table. The occurrence of unknown compounds is to be expected in many samples, and does not denote particular problems unless noted otherwise in the conclusion.

Bracketed value ([xx]): A bracketed percent value indicate that two or more compound percentage could not be solved due to coelution.

This page was intentionally left blank. The following pages present the complete data of the analysis.

DB-WAX





FULL ANALYSIS DATA

Toluene	Column DB-WAX			Column DB-5		
	1.56*	1001.7	[1.29]	1.22	759.0	0.01
Hexanal	2.00	1043.7	0.02	1.52	799.6	0.01
Unknown BOCA I [m/z 109, 67 (32), 81 (14), 41 (12), 124 (10)]	0.81	878.5	tr	1.89	832.2	tr
(2E)-Hexenal	3.56	1173.0	0.02	2.10	849.3	0.02
Hexanol	5.60*	1321.2	[0.03]	2.40	873.7	0.02
Bornylene				2.77	904.0	0.01
Tricyclene	1.36	972.8	0.11	2.99	919.0	0.11
α -Thujene	1.56*	1001.7	[1.29]	3.11	926.8	1.29
α -Pinene	1.52	997.9	43.68	3.23	934.5	43.92
α -Fenchene	1.76	1021.4	0.06	3.36*†	943.3	[0.05]
Camphene	1.83	1027.8	0.37	3.37*†	944.2	[0.39]
Thuja-2,4(10)-diene	2.44*	1085.4	[6.17]	3.47	950.3	0.05
3,7,7- Trimethylcyclohepta- 1,3,5-triene	3.06*	1134.7	[10.48]	3.69	964.9	0.02
Sabinene	2.44*	1085.4	[6.17]	3.80*	972.2	[8.65]
β -Pinene	2.25	1066.9	2.51	3.80*	972.2	[8.65]
6-Methyl-5-hepten- 2-one	5.24	1294.2	0.01	4.06	989.0	0.02
Myrcene	3.06*	1134.7	[10.48]	4.14	994.7	10.49
2-Carene	2.54	1094.8	0.07	4.21	999.2	0.07
Pseudolimonene	2.98	1128.6	0.02	4.26*	1002.6	[0.39]
α -Phellandrene	2.94	1125.9	0.37	4.26*	1002.6	[0.39]
Δ^3 -Carene	2.74	1110.6	0.26	4.35	1008.1	0.26
1,4-Cineole	3.15	1141.4	0.01	4.44	1013.7	0.01
α -Terpinene	3.13	1140.1	1.19	4.46	1015.1	1.19
<i>meta</i> -Cymene	4.28	1225.3	0.79	4.58	1022.6	0.80
1,8-Cineole	3.45*	1164.6	[1.19]	4.66*	1027.8	[5.87]
β -Phellandrene	3.45*	1164.6	[1.19]	4.66*	1027.8	[5.87]
Limonene	3.37	1158.2	4.68	4.66*	1027.8	[5.87]
(Z)- β -Ocimene	3.95	1202.4	0.01	4.87	1040.4	0.01
(E)- β -Ocimene	4.15	1216.6	0.11	5.02	1050.2	0.11
γ -Terpinene	3.99	1204.9	2.05	5.15	1057.9	2.05
<i>cis</i> -Sabinene hydrate	7.08	1428.2	0.03	5.27	1065.9	0.03
Unknown PIMA I [m/z 79, 93 (60), 43 (40), 94 (35), 137 (33), 77 (26), 91 (20), 152 (18)]	4.97	1274.7	0.03	5.31	1068.4	0.03
<i>cis</i> -Linalool oxide	6.72	1401.4	0.01	5.35	1071.0	0.01

(fur.)						
<i>meta</i> -Cymenene	6.39	1377.8	0.04	5.46	1077.3	0.01
Terpinolene	4.47	1239.0	1.38	5.60	1086.5	1.54
α -Pinene oxide	5.60*	1321.2	[0.03]	5.70*	1092.6	[0.01]
6,7-Epoxyterpinolene	6.27	1368.7	0.01	5.70*	1092.6	[0.01]
<i>trans</i> -Sabinene hydrate	8.16	1507.6	0.03	5.76†	1096.3	0.02
Linalool	8.25	1514.7	0.11	5.86	1102.3	0.11
endo-Fenchol	8.57*	1539.5	[0.11]	6.00	1111.8	0.05
<i>cis-para</i> -Menth-2-en-1-ol	8.31	1519.6	0.04	6.12	1119.2	0.04
α -Campholenal	7.20	1436.6	0.06	6.16	1121.9	0.04
<i>trans</i> -Pinocarveol	9.37	1601.3	0.06	6.36	1134.4	0.05
<i>cis</i> -Verbenol	9.45*	1608.0	[0.19]	6.40	1136.8	0.01
Camphene hydrate	8.72	1551.5	0.02	6.49*	1142.9	[0.04]
Epoxyterpinolene	6.92	1415.9	0.01	6.49*	1142.9	[0.04]
<i>meta</i> -Mentha-4,6-dien-8-ol	9.54	1615.0	0.06	6.54	1145.7	0.02
Citronellal	7.24*	1439.8	[0.05]	6.63	1151.6	0.03
Pinocamphone	7.44	1454.4	0.02	6.66	1153.9	0.02
Borneol	9.99*	1651.6	[1.85]	6.81	1163.2	0.07
α -Phellandren-8-ol	10.36	1681.0	0.09	6.86	1166.6	0.05
Terpinen-4-ol	8.77*	1555.0	[2.14]	7.00	1175.1	2.09
<i>para</i> -Cymen-8-ol	11.72	1795.1	0.04	7.15	1185.0	0.03
Myrtenal	8.87	1562.7	0.09	7.22*	1189.0	[0.39]
α -Terpineol	9.99*	1651.6	[1.85]	7.22*	1189.0	[0.39]
Myrtenol	11.06	1739.3	0.03	7.30	1194.5	0.06
<i>trans</i> -Isopiperitenol	10.60*	1701.0	[0.73]	7.35	1197.8	0.01
Verbenone	9.80*	1635.8	[0.71]	7.42	1201.9	0.03
Decanal	7.51	1459.3	0.02	7.49	1206.7	0.02
<i>trans</i> -Carveol	11.58	1783.8	0.01	7.67	1218.5	0.01
<i>cis</i> -Carveol	11.91	1811.8	0.02	7.84	1229.8	0.01
Thymol methyl ether	8.63*	1544.4	[3.76]	7.88	1232.3	0.05
Citronellol	10.92*	1727.8	[0.06]	7.91	1234.3	0.05
Carvacrol methyl ether	8.77*	1555.0	[2.14]	8.03	1242.9	0.02
Piperitone	10.10	1660.8	0.11	8.12	1248.9	0.03
Geraniol	11.82	1804.3	0.02	8.24	1256.9	0.01
Methyl citronellate	8.39	1525.7	0.07	8.33	1262.8	0.07
Geranial	10.32	1678.5	0.03	8.42*	1268.6	[0.06]
<i>trans</i> -Ascaridole glycol	14.41	2040.2	0.02	8.42*	1268.6	[0.06]
Decanol	10.92*	1727.8	[0.06]	8.56	1277.7	0.03
Bornyl acetate	8.44	1529.6	0.25	8.63	1282.6	0.26
2-Undecanone	8.80	1557.6	0.06	8.81	1294.6	0.06

Myrtenyl acetate	9.83	1638.3	0.02	9.21	1322.4	0.02
Terpinyl acetate analog	9.80*	1635.8	[0.71]	9.37	1333.7	0.02
α -Cubebene	6.98	1420.3	0.34	9.57*	1347.4	[0.38]
α -Terpinyl acetate	9.90	1644.2	0.09	9.57*	1347.4	[0.38]
Citronellyl acetate	9.67	1625.7	0.02	9.68	1355.2	0.02
α -Ylangene	7.24*	1439.8	[0.05]	9.85	1367.4	0.06
α -Copaene	7.35	1447.7	0.44	9.92	1372.1	0.45
<i>cis</i> - β -Elemene	8.49	1533.4	0.02	10.03	1380.0	0.03
<i>trans</i> -Myrtenyl acetate	10.51	1693.7	0.04	10.06	1382.1	0.04
Geranyl acetate	10.81	1718.9	0.02	10.11	1385.7	0.02
β -Cubebene	7.98	1493.9	0.04	10.12	1386.7	0.04
β -Elemene	8.63*	1544.4	[3.76]	10.16	1389.6	0.96
α -Funebrene	8.08*	1501.5	[0.27]	10.20	1392.4	0.03
Sibirene	8.08*	1501.5	[0.27]	10.27*	1397.1	[0.30]
Longifolene	8.18	1509.8	0.05	10.27*	1397.1	[0.30]
α -Gurjunene	7.81	1481.5	0.03	10.37	1404.0	0.03
β -Ylangene	8.36	1523.2	0.06	10.50*	1413.8	[2.82]
β -Caryophyllene	8.63*	1544.4	[3.76]	10.50*	1413.8	[2.82]
β -Copaene	8.57*	1539.5	[0.11]	10.63	1423.6	0.14
γ -Elemene	9.24	1591.1	0.36	10.73	1430.7	0.35
<i>trans</i> - α -Bergamotene	8.63*	1544.4	[3.76]	10.76	1432.9	0.08
α -Himachalene	9.15	1584.4	0.03	10.88	1441.8	0.02
α -Humulene	9.50	1611.9	1.96	10.96	1447.8	1.99
allo-Aromadendrene	9.18	1586.7	0.02	11.05	1454.5	0.01
(<i>E</i>)- β -Farnesene	9.74	1631.4	0.48	11.10	1458.1	0.50
<i>trans</i> -Cadina-1(6),4-diene	9.45*	1608.0	[0.19]	11.25	1469.3	0.21
γ -Muurolene	9.80*	1635.8	[0.71]	11.30	1473.1	0.60
Germacrene D	9.99*	1651.6	[1.85]	11.33	1475.8	1.48
β -Selinene	10.08	1658.4	0.31	11.39	1480.1	0.35
γ -Amorphene	10.02	1653.9	0.05	11.46	1485.2	0.08
Bicyclogermacrene	10.27	1673.8	0.09	11.52*	1489.7	[0.53]
α -Selinene	10.15	1664.3	0.32	11.52*	1489.7	[0.53]
epi-Cubebol	12.21	1838.6	0.01	11.52*	1489.7	[0.53]
Viridiflorene	9.86	1640.7	0.06	11.52*	1489.7	[0.53]
Cuparene	11.26	1756.3	0.02	11.62*	1496.7	[0.51]
α -Muurolene	10.24	1671.7	0.48	11.62*	1496.7	[0.51]
Germacrene A	10.60*	1701.0	[0.73]	11.62*	1496.7	[0.51]
γ -Cadinene	10.60*	1701.0	[0.73]	11.78*	1509.0	[0.60]
(3 <i>E</i> ,6 <i>E</i>)- α -Farnesene	10.71	1710.0	0.04	11.78*	1509.0	[0.60]
δ -Cadinene	10.64	1703.9	1.86	11.92*	1520.3	[2.04]
<i>trans</i> -Calamenene	11.43	1771.2	0.04	11.92*	1520.3	[2.04]

Zonarene	10.60*	1701.0	[0.73]	11.92*	1520.3	[2.04]
Selina-4(15),7(11)-diene	10.79*	1716.6	[0.46]	12.03	1528.5	0.33
Selina-4,7(11)-diene?	10.73	1712.0	0.15	12.08*	1532.9	[0.21]
α -Cadinene	10.99	1734.0	0.11	12.08*	1532.9	[0.21]
Selina-3,7(11)-diene	10.79*	1716.6	[0.46]	12.11	1535.3	0.25
α -Elemol	14.24	2023.8	0.03	12.24	1544.8	0.01
Germacrene B	11.33	1762.2	0.76	12.30	1549.5	0.76
(E)-Nerolidol	13.98*	1998.7	[0.13]	12.48	1563.6	0.06
Spathulenol	14.60	2058.3	0.08	12.57	1571.0	0.06
Caryophyllene oxide	12.98	1906.7	0.12	12.61*	1574.0	[0.13]
Caryophyllene oxide isomer	12.90	1899.4	0.02	12.61*	1574.0	[0.13]
Unknown ARAN XX [m/z 159, 83 (88), 55 (53), 93 (50), 121 (48)... 220 (9)]				12.70	1581.5	0.02
Humulene epoxide II	13.57	1961.4	0.07	12.94	1600.1	0.08
1,10-diepi-Cubenol	13.98*	1998.7	[0.13]	13.02	1606.3	0.02
Junenol	13.82	1983.8	0.02	13.05	1608.7	0.03
τ -Cadinol	15.09	2106.3	0.09	13.38*	1636.6	[0.17]
τ -Muurolol	15.25	2122.4	0.09	13.38*	1636.6	[0.17]
α -Muurolol	15.39	2136.0	0.04	13.44	1641.0	0.05
α -Eudesmol	15.58	2154.5	0.04	13.52	1647.3	0.03
α -Cadinol	15.68*	2165.0	[0.14]	13.54	1648.9	0.12
(3Z)-Caryophylla-3,8(13)-dien-5 β -ol	17.01*	2302.6	[0.03]	13.74	1666.1	0.03
Germacrene-4(15),5,10(14)-trien-1 α -ol	16.25*	2222.9	[0.07]	13.90	1678.8	0.01
Juniper camphor	16.25*	2222.9	[0.07]	14.00	1687.4	0.02
Aromadendrane-4,10-diol	17.01*	2302.6	[0.03]	14.31	1713.5	0.02
meta-Camphorene	15.68*	2165.0	[0.14]	16.93	1949.1	0.04
para-Camphorene	16.02	2199.0	0.02	17.29	1982.8	0.02
18-Norabieta-8,11,13-triene?				17.47	2000.2	0.01
ar-Abietatriene	17.94	2402.3	0.01	17.88	2040.7	0.01
Manool	19.53	2583.7	0.01	17.92	2044.6	0.01
7,13-Abietadiene	17.57	2361.9	0.02	18.13	2065.1	0.01
Total reported		97.96%			98.56%	

*: Two or more compounds are coeluting on this column

[xx]: Duplicate percentage due to coelutions, only the first one is taken into account in the consolidated total

Essential Oil, *Juniperus communis*

Internal code: 24A04-PTH02

Organic Juniper Berry - Bulgaria - J50107R

Report prepared for:

Plant Therapy

†: Peaks apexes were resolved, but peaks overlapped and were summed for analysis

tr: The compound has been detected below 0.005% of total signal.

Note: no correction factor was applied

R.T.: Retention time (minutes)

R.I.: Retention index