

Date : 2025-10-03

CERTIFICATE OF ANALYSIS - GC PROFILING

SAMPLE IDENTIFICATION

**Internal code :** 25H20-PTH20

**Customer Identification :** Lemongrass - India - L80119R

**Type :** Essential Oil

**Source :** *Cymbopogon flexuosus*

**Customer :** Plant Therapy

Checked and approved by:

---

Alexis St-Gelais, Ph. D., chimiste 2013-174

*Notes: This report may not be published, including online, without the written consent from Laboratoire PhytoChemia. This report is digitally signed, it is only considered valid if the digital signature is intact. The results only describe the samples that were submitted to the assays.*

This report is an update from the first version issued on 2025-08-27 to correct the customer identification.

## GAS CHROMATOGRAPHIC ANALYSIS

**Method :** PC-MAT-014 - Analysis of the composition of an essential oil or other volatile liquide by FAST GC-FID

**✖ISO**

**Results :** See analysis summary (next page)

**Analyst :** Sylvain Mercier, M. Sc., Chimiste 2014-005

**Date :** 2025-08-27

## PHYSICOCHEMICAL DATA

**Refractive index :**  $1.4858 \pm 0.0003$  (20 °C)

**Method :** PC-MAT-016 - Measure of the refractive index of a liquid.

**Analyst :** Cassandra Baker

**Date :** 2025-08-21

## CONCLUSION

No adulterant, contaminant or diluent has been detected using this method.

## ANALYSIS SUMMARY - CONSOLIDATED CONTENTS

New readers of similar reports are encouraged to read table footnotes at least once.

Identification	%	Class
2-Methyl-3-buten-2-ol	0.03	Aliphatic alcohol
Isovaleral	0.01	Aliphatic aldehyde
2-Methylbutyral	tr	Aliphatic aldehyde
2-Ethylfuran	tr	Furan
Isoamyl alcohol	0.01	Aliphatic alcohol
Hexanal	0.01	Aliphatic aldehyde
Unknown	0.01	Unknown
(3Z)-Hexenol	0.01	Aliphatic alcohol
4-Heptanone	0.02	Aliphatic ketone
Hexanol	tr	Aliphatic alcohol
Unknown	0.01	Unknown
Tricyclene	0.12	Monoterpene
$\alpha$ -Pinene	0.18	Monoterpene
Camphene	0.96	Monoterpene
Benzaldehyde	0.01	Simple phenolic
Sabinene	0.01	Monoterpene
$\beta$ -Pinene	0.01	Monoterpene
6-Methyl-5-hepten-2-one	1.01	Aliphatic ketone
Dehydro-1,8-cineole	0.04	Monoterpenic ether
Myrcene	0.08	Monoterpene
6-Methyl-5-hepten-2-ol	0.07	Aliphatic alcohol
Octanal	0.08	Aliphatic aldehyde
$\alpha$ -Phellandrene	0.01	Monoterpene
$\alpha$ -Terpinene	0.01	Monoterpene
<i>para</i> -Cymene	0.01	Monoterpene
Limonene	0.26	Monoterpene
$\beta$ -Phellandrene	[0.04]	Monoterpene
1,8-Cineole	[0.04]	Monoterpenic ether
Benzeneacetaldehyde	0.02	Simple phenolic
(Z)- $\beta$ -Ocimene	0.33	Monoterpene
(E)- $\beta$ -Ocimene	0.21	Monoterpene
2,6-Dimethyl-5-heptenal (melonal)	0.03	Aliphatic aldehyde
$\gamma$ -Terpinene	0.01	Monoterpene
<i>cis</i> -Linalool oxide (fur.)	0.02	Monoterpenic alcohol
4-Nonanone	0.98	Aliphatic ketone
Camphenilone	0.02	Normonoterpenic ketone
Terpinolene	0.05	Monoterpene
<i>trans</i> -Linalool oxide (fur.)	0.02	Monoterpenic alcohol
$\alpha$ -Pinene oxide	0.01	Monoterpenic ether
4-Nonanol	0.03	Aliphatic alcohol

6,7-Epoxygeranyl	0.01	Monoterpenic ether
Rosefuran	0.21	Monoterpenic ether
Linalool	0.99	Monoterpenic alcohol
cis-Chrysanthemal?	0.02	Monoterpenic aldehyde
(Z)-6-Methyl-3,5-heptadien-2-one	0.02	Aliphatic ketone
trans-para-Mentha-2,8-dien-1-ol	0.03	Monoterpenic alcohol
Unknown	0.08	Unknown
Unknown	0.15	Unknown
Unknown	0.02	Unknown
trans-Chrysanthemal	0.32	Monoterpenic aldehyde
exo-Isocitral	0.08	Monoterpenic aldehyde
Citronellal	0.20	Monoterpenic aldehyde
Borneol	0.15	Monoterpenic alcohol
α-Phellandren-8-ol	0.03	Monoterpenic alcohol
Isoneral	0.75	Monoterpenic aldehyde
Terpinen-4-ol	[0.13]	Monoterpenic alcohol
Rosefuran oxide	[0.13]	Monoterpenic ether
Unknown	0.13	Oxygenated monoterpene
Unknown	0.05	Unknown
Isogeranial	1.20	Monoterpenic aldehyde
Myrtenal	0.02	Monoterpenic aldehyde
α-Terpineol	0.12	Monoterpenic alcohol
Unknown	0.07	Unknown
trans-Isopiperitenol	0.07	Monoterpenic alcohol
Unknown	0.05	Oxygenated monoterpene
Decanal	0.16	Aliphatic aldehyde
cis-Isopiperitenol	0.02	Monoterpenic alcohol
2,3-Epoxyneral?	0.04	Monoterpenic aldehyde
Nerol	0.18	Monoterpenic alcohol
Citronellol	0.11	Monoterpenic alcohol
Neral	31.64	Monoterpenic aldehyde
Piperitone	0.05	Monoterpenic ketone
Geraniol	6.52	Monoterpenic alcohol
Geranial	41.42	Monoterpenic aldehyde
Unknown	0.09	Oxygenated monoterpene
Bornyl acetate	0.02	Monoterpenic ester
Geranyl formate	0.05	Monoterpenic ester
Methyl nerate?	0.02	Monoterpenic ester
Methyl geranate	0.03	Monoterpenic ester
Neric acid	0.06	Monoterpenic acid
Unknown	0.07	Unknown
α-Cubebene	0.02	Sesquiterpene
Citronellyl acetate	0.01	Monoterpenic ester
Eugenol	0.01	Phenylpropanoid
Cyclosativene I	0.01	Sesquiterpene

Geranic acid	0.36	Aliphatic acid
Neryl acetate	0.02	Monoterpenic ester
$\alpha$ -Ylangene	0.06	Sesquiterpene
$\alpha$ -Copaene	0.08	Sesquiterpene
$\beta$ -Bourbonene	0.06	Sesquiterpene
$\beta$ -Cubebene	0.04	Sesquiterpene
Geranyl acetate	2.42	Monoterpenic ester
$\beta$ -Elemene	0.09	Sesquiterpene
$\beta$ -Longipinene	0.02	Sesquiterpene
$\beta$ -Caryophyllene	1.37	Sesquiterpene
$\beta$ -Ylangene	0.03	Sesquiterpene
$\beta$ -Copaene	0.03	Sesquiterpene
<i>trans</i> - $\alpha$ -Bergamotene	0.02	Sesquiterpene
6,9-Guaiadiene	0.02	Sesquiterpene
( <i>E</i> )-Isoeugenol	0.45	Phenylpropanoid
$\alpha$ -Humulene	0.17	Sesquiterpene
<i>cis</i> -Muurolo-4(15),5-diene	0.04	Sesquiterpene
<i>trans</i> -Cadinene-1(6),4-diene	0.03	Sesquiterpene
Germacrene D	0.25	Sesquiterpene
$\gamma$ -Amorphene	0.03	Sesquiterpene
epi-Cubebol	0.13	Sesquiterpenic alcohol
$\alpha$ -Muurolole	0.04	Sesquiterpene
$\delta$ -Amorphene	0.03	Sesquiterpene
$\gamma$ -Cadinene	1.01	Sesquiterpene
Cubebol	0.26	Sesquiterpenic alcohol
$\delta$ -Cadinene	0.25	Sesquiterpene
10-epi-Cubebol?	0.11	Sesquiterpenic alcohol
( <i>E</i> )- $\gamma$ -Bisabolene	0.14	Sesquiterpene
$\alpha$ -Cadinene	0.04	Sesquiterpene
( <i>E</i> )- $\alpha$ -Bisabolene	0.01	Sesquiterpene
$\alpha$ -Elemol	0.06	Sesquiterpenic alcohol
Germacrene B	0.04	Sesquiterpene
Geranyl butyrate	0.10	Monoterpenic ester
Caryophyllene oxide	0.32	Sesquiterpenic ether
Caryophyllene oxide isomer	0.08	Sesquiterpenic ether
Humulene epoxide II	0.04	Sesquiterpenic ether
Selin-6-en-4 $\alpha$ -ol isomer	0.01	Sesquiterpenic alcohol
1-epi-Cubebol	0.05	Sesquiterpenic alcohol
Cubebol	0.02	Sesquiterpenic alcohol
$\tau$ -Muurolol	0.02	Sesquiterpenic alcohol
$\beta$ -Eudesmol	0.01	Sesquiterpenic alcohol
Unknown	0.01	Oxygenated sesquiterpene
$\alpha$ -Eudesmol	0.02	Sesquiterpenic alcohol
(2 <i>Z</i> ,6 <i>Z</i> )-Farnesol	0.02	Sesquiterpenic alcohol
Farnesal isomer	0.01	Sesquiterpenic aldehyde

(2E,6E)-Farnesal	0.02	Sesquiterpenic aldehyde
Neophytadiene	0.03	Diterpene
Phytone	0.02	Terpenic ketone
meta-Camphorene	0.01	Diterpene
Unknown	0.02	Unknown
Unknown	0.01	Unknown
Unknown	0.04	Unknown
Unknown	0.04	Unknown
Unknown	0.02	Unknown
Dicitral	0.04	Diterpenic aldehyde
Unknown	0.03	Unknown
Benzyl (E)-isoeugenol	0.01	Phenolic ester
Unknown	0.06	Unknown
Phytol isomer I	0.01	Diterpenic alcohol
Unknown	0.01	Unknown
Unknown	0.03	Unknown
<b>Consolidated total</b>	<b>98.94</b>	

tr: The compound has been detected below 0.005% of the total signal

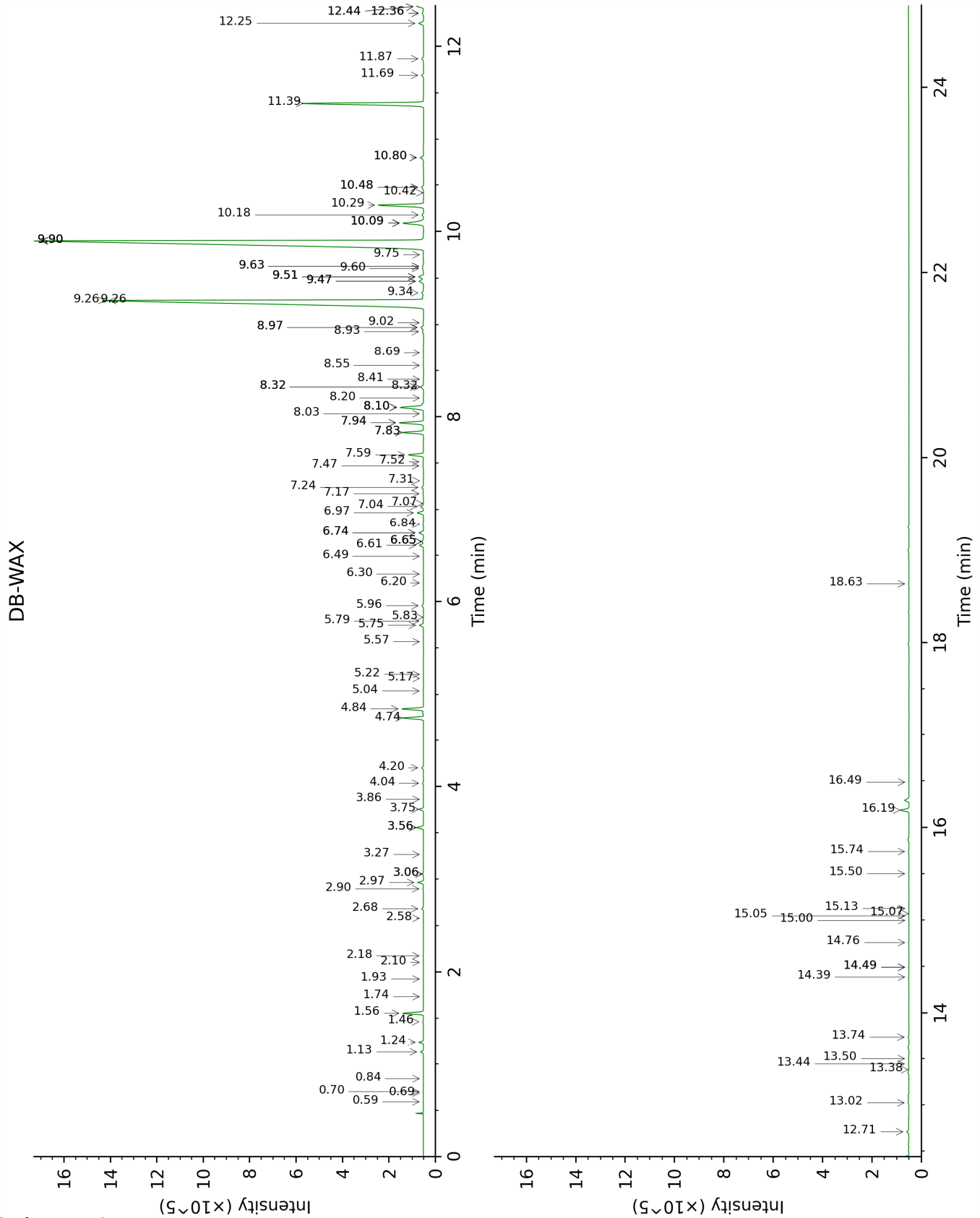
Note: no correction factor was applied

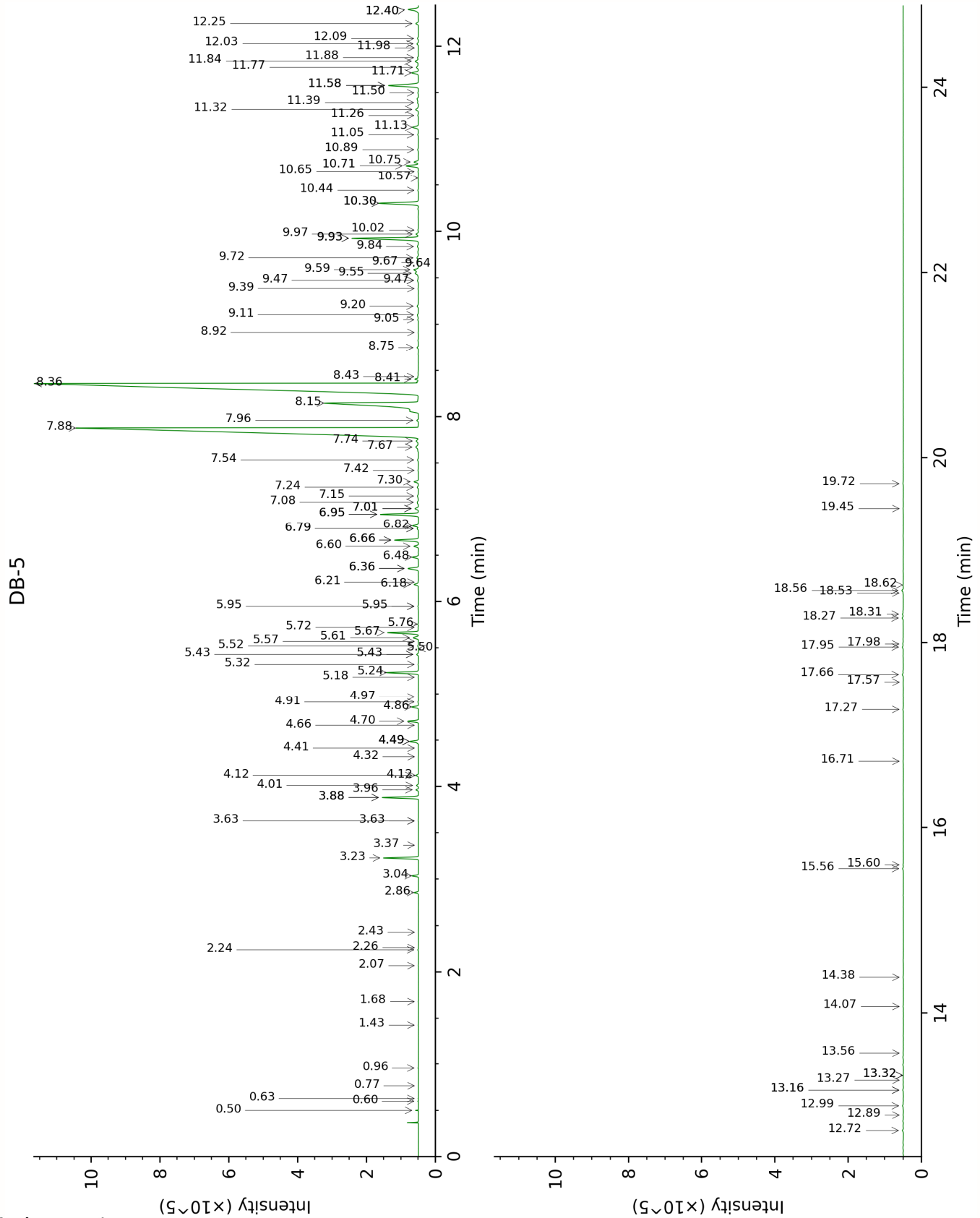
**About "consolidated" data:** The table above presents the breakdown of the sample volatile constituents after applying an algorithm to collapse data acquired from the multi-columns system of PhytoChemia into a single set of consolidated contents. In case of discrepancies between columns, the algorithm is set to prioritize data from the most standard DB-5 column, and smallest values so as to avoid overestimating individual content. This process is semi-automatic. Advanced users are invited to consult the "Full analysis data" table after the chromatograms in this report to access the full untreated data and perform their own calculations if needed.

**Unknowns:** Unknown compounds' mass spectral data is presented in the "Full analysis data" table. The occurrence of unknown compounds is to be expected in many samples, and does not denote particular problems unless noted otherwise in the conclusion.

**Bracketed value ([xx]):** A bracketed percent value indicate that two or more compound percentage could not be solved due to coelution.

This page was intentionally left blank. The following pages present the complete data of the analysis.





FULL ANALYSIS DATA

2-Methyl-3-buten-2-ol	Column DB-WAX			Column DB-5		
	1.46	1015.6	0.03	0.50	602.5	0.03
Isovaleral	0.70	884.0	0.01	0.60	639.7	0.01
2-Methylbutyral	0.69	877.5	tr	0.63	650.3	tr
2-Ethylfuran	0.84	916.4	tr	0.77	700.3	tr
Isoamyl alcohol	3.27	1179.7	0.02	0.96	730.3	0.01
Hexanal	1.74	1043.9	0.01	1.43	798.7	0.01
Unknown PEGR III [m/z 81, 69 (80), 41 (65), 83 (52), 109 (48), 55 (47)...]	0.59	838.5	0.01	1.68	822.2	0.01
(3Z)-Hexenol	5.57	1349.9	0.01	2.07	855.0	0.01
4-Heptanone	2.18	1090.0	0.02	2.24	869.5	0.02
Hexanol	5.22	1324.4	0.01	2.26	871.5	tr
Unknown CULE I [m/z 69, 41 (57), 81 (57), 80 (18), 79 (18), 67 (17)...]				2.43	885.5	0.01
Tricyclene	1.13	968.5	0.11	2.86	918.0	0.12
$\alpha$ -Pinene	1.24	988.4	0.17	3.04	930.2	0.18
Camphene	1.56	1025.2	0.96	3.23	943.1	0.96
Benzaldehyde	7.07	1460.1	0.01	3.37	952.3	0.01
Sabinene	2.10	1082.6	0.01	3.63*	969.9	[0.02]
$\beta$ -Pinene	1.93	1063.9	0.01	3.63*	969.9	[0.02]
6-Methyl-5-hepten-2-one	4.84	1296.1	1.01	3.88*	986.8	[1.03]
Dehydro-1,8-cineole	2.90	1150.0	0.04	3.88*	986.8	[1.03]
Myrcene	2.68	1132.8	0.08	3.96	992.4	0.08
6-Methyl-5-hepten-2-ol	6.65*	1428.9	[0.10]	4.01	995.6	0.07
Octanal	4.20	1249.7	0.08	4.12*	1002.8	[0.09]
$\alpha$ -Phellandrene	2.58	1124.5	0.01	4.12*	1002.8	[0.09]
$\alpha$ -Terpinene				4.32	1015.6	0.01
<i>para</i> -Cymene	3.86	1224.9	0.01	4.41	1021.6	0.01
Limonene	2.97	1155.6	0.26	4.49*	1026.1	[0.30]
$\beta$ -Phellandrene	3.06*	1162.8	[0.04]	4.49*	1026.1	[0.30]
1,8-Cineole	3.06*	1162.8	[0.04]	4.49*	1026.1	[0.30]
Benzeneacetaldehyde	8.56	1574.3	0.02	4.66	1037.1	0.02
(Z)- $\beta$ -Ocimene	3.56*	1202.6	[0.33]	4.70	1039.9	0.33
(E)- $\beta$ -Ocimene	3.76	1217.0	0.20	4.86	1049.7	0.21
2,6-Dimethyl-5-heptenal (melonal)	5.04	1311.5	0.02	4.91	1053.2	0.03
$\gamma$ -Terpinene	3.56*	1202.6	[0.33]	4.97	1056.9	0.01
<i>cis</i> -Linalool oxide (fur.)	6.30	1402.7	0.02	5.18	1070.4	0.02

4-Nonanone	4.74	1289.0	0.99	5.24	1073.7	0.98
Camphenilone	6.20	1395.8	0.01	5.32	1079.2	0.02
Terpinolene	4.04	1237.6	0.05	5.43*	1086.1	[0.06]
<i>trans</i> -Linalool oxide (fur.)	6.65*	1428.9	[0.10]	5.43*	1086.1	[0.06]
$\alpha$ -Pinene oxide	5.17	1321.3	0.01	5.50	1090.2	0.01
4-Nonanol				5.52	1091.9	0.03
6,7-Epoxyterpinene	5.83	1369.0	0.01	5.57	1095.0	0.01
Rosefuran	5.75	1362.7	0.21	5.61	1097.5	0.21
Linalool	7.83*	1518.0	[1.01]	5.67	1101.0	0.99
<i>cis</i> -Chrysanthemal?	5.79	1365.9	0.03	5.72	1104.6	0.02
( <i>Z</i> )-6-Methyl-3,5-heptadien-2-one	7.94*	1526.2	[1.23]	5.76	1106.8	0.02
<i>trans-para</i> -Mentha-2,8-dien-1-ol	8.69	1585.0	0.03	5.95*†	1119.3	[0.02]
Unknown CYFL II [m/z 81, 79 (19), 41 (12), 92 (8), 77 (8)...]	5.96	1378.0	0.08	5.95*†	1119.3	[0.02]
Unknown CYFL III [m/z 81, 70 (98), 67 (63), 82 (53), 41 (46), 69 (46), 109 (43)...]	6.61	1425.9	0.22	6.18	1134.5	0.15
Unknown CYFL IV [m/z 95, 67 (86), 41 (68), 82 (64), 123 (62)...]	7.31	1478.4	0.02	6.21	1136.1	0.02
<i>trans</i> -Chrysanthemal	6.97	1452.5	0.32	6.36*	1145.6	[0.40]
<i>exo</i> -Isocitral	7.24	1473.0	0.08	6.36*	1145.6	[0.40]
Citronellal	6.74*	1435.9	[0.24]	6.48	1153.5	0.20
Borneol	9.51*	1651.3	[0.30]	6.60	1161.1	0.15
$\alpha$ -Phellandren-8-ol	9.90*	1682.8	[41.55]	6.66*	1165.5	[0.78]
Isoneral	7.59	1499.3	0.75	6.66*	1165.5	[0.78]
Terpinen-4-ol	8.32*	1556.2	[0.18]	6.79*†	1173.5	[0.05]
Rosefuran oxide	8.32*	1556.2	[0.18]	6.79*†	1173.5	[0.05]
Unknown CYFL V [m/z 84, 83 (74), 137 (56), 41 (47), 93 (43), 108 (40)... 152 (2)]	9.34	1637.3	0.13	6.82*†	1175.5	[0.21]
Unknown CYFL XIV [m/z 69, 41 (65), 109 (36), 67 (16), 84 (11), 43 (10), 55 (9)...]				6.95*	1183.8	[1.25]
Isogeranial	7.94*	1526.2	[1.23]	6.95*	1183.8	[1.25]
Myrtenal	8.41	1562.7	0.02	7.01*	1187.9	[0.13]
$\alpha$ -Terpineol	9.51*	1651.3	[0.30]	7.01*	1187.9	[0.13]

Unknown DRMO III [m/z 43, 81 (47), 67 (45), 69 944), 41 (42), 59 (40), 55 (39)...]	8.93	1603.4	0.07	7.08	1192.3	0.07
<i>trans</i> -Isopiperitenol	10.18	1705.8	0.08	7.15	1196.6	0.07
Unknown CYFL VI [m/z 84, 41 (83), 83 (79), 91 (76), 93 (67), 119 (64), 137 (63), 109 (54), 108 (54)... 152 (4)]	9.90*	1682.8	[41.55]	7.24	1202.8	0.05
Decanal	7.04	1457.7	0.17	7.30	1206.7	0.16
<i>cis</i> -Isopiperitenol	10.09*	1698.4	[1.34]	7.42	1215.0	0.02
2,3-Epoxyneral?				7.54	1222.6	0.04
Nerol	10.80*	1759.0	[0.20]	7.67	1231.9	0.18
Citronellol	10.48*	1731.1	[0.13]	7.74	1236.4	0.11
Neral	9.26*	1630.7	[31.65]	7.88	1245.9	31.64
Piperitone	9.63*	1660.5	[0.06]	7.96	1251.5	0.05
Geraniol	11.39	1809.3	6.54	8.15†	1264.1	6.14
Geranial	9.90*	1682.8	[41.55]	8.36	1278.4	41.42
Unknown CYFL VII [m/z 43, 69 (77), 41 (70), 109 (54)... 152 (6)]	12.71	1928.6	0.11	8.41	1281.6	0.09
Bornyl acetate	8.03	1533.7	0.02	8.43	1283.5	0.02
Geranyl formate	9.60	1658.6	0.08	8.75	1305.1	0.05
Methyl nerate?				8.92	1313.4	0.02
Methyl geranate	9.47*	1647.5	[0.29]	9.05	1323.2	0.03
Neric acid				9.10	1326.9	0.06
Unknown CYFL VIII [m/z 82, 59 (44), 41 (43), 95 (31), 43 (29), 81 (24)...]	12.44*	1902.9	[0.38]	9.20	1333.6	0.07
$\alpha$ -Cubebene	6.49	1417.1	0.02	9.39	1347.0	0.02
Citronellyl acetate	9.26*	1630.7	[31.65]	9.48*	1353.3	[0.06]
Eugenol	14.49*	2098.3	[0.02]	9.48*	1353.3	[0.06]
Cyclosativene I	6.65*	1428.9	[0.10]	9.55*†	1358.7	[0.17]
Geranic acid				9.59*†	1361.5	[0.20]
Neryl acetate	9.90*	1682.8	[41.55]	9.64	1365.3	0.02
$\alpha$ -Ylangene	6.74*	1435.9	[0.24]	9.67	1366.9	0.06
$\alpha$ -Copaene	6.84	1442.9	0.04	9.72	1370.5	0.08
$\beta$ -Bourbonene	7.17	1468.0	0.04	9.84	1379.2	0.06
$\beta$ -Cubebene	7.47	1490.3	0.04	9.93*	1385.4	[2.42]
Geranyl acetate	10.28	1714.8	2.42	9.93*	1385.4	[2.42]
$\beta$ -Elemene	8.10*	1539.1	[1.49]	9.97	1388.7	0.09

β-Longipinene	7.52	1493.6	0.04	10.02	1391.7	0.02
β-Caryophyllene	8.10*	1539.1	[1.49]	10.30*	1412.7	[1.49]
β-Ylangene	7.83*	1518.0	[1.01]	10.30*	1412.7	[1.49]
β-Copaene	8.10*	1539.1	[1.49]	10.44	1423.1	0.03
<i>trans</i> -α-Bergamotene	8.20	1546.9	0.02	10.58	1433.1	0.02
6,9-Guaiadiene	8.32*	1556.2	[0.18]	10.65	1438.7	0.02
( <i>E</i> )-Isoeugenol	16.19	2271.7	0.44	10.71	1443.4	0.45
α-Humulene	8.97*	1607.0	[0.16]	10.75	1446.6	0.17
<i>cis</i> -Muurolo-4(15),5-diene	9.02	1611.3	0.04	10.89	1456.5	0.04
<i>trans</i> -Cadina-1(6),4-diene	8.97*	1607.0	[0.16]	11.05	1468.6	0.03
Germacrene D	9.47*	1647.5	[0.29]	11.13	1474.6	0.25
γ-Amorphene	9.51*	1651.3	[0.30]	11.26	1484.1	0.03
epi-Cubebol	11.69	1836.3	0.10	11.32	1489.0	0.13
α-Muurolole	9.75	1670.6	0.03	11.39	1494.6	0.04
δ-Amorphene	9.63*	1660.5	[0.06]	11.50	1502.4	0.03
γ-Cadinene	10.09*	1698.4	[1.34]	11.58*	1508.6	[1.27]
Cubebol	12.25	1886.3	0.26	11.58*	1508.6	[1.27]
δ-Cadinene	10.09*	1698.4	[1.34]	11.72	1519.4	0.25
10-epi-Cubebol?	13.44	1996.7	0.04	11.77	1524.1	0.11
( <i>E</i> )-γ-Bisabolene				11.84	1529.3	0.14
α-Cadinene	10.48*	1731.1	[0.13]	11.88	1532.3	0.04
( <i>E</i> )-α-Bisabolene	10.42	1726.1	0.01	11.98	1540.6	0.01
α-Elemol	13.74	2025.3	0.04	12.03	1544.2	0.06
Germacrene B	10.80*	1759.0	[0.20]	12.08	1548.6	0.04
Geranyl butyrate	11.87	1852.2	0.10	12.25	1561.4	0.10
Caryophyllene oxide	12.44*	1902.9	[0.38]	12.40*	1573.5	[0.45]
Caryophyllene oxide isomer	12.36*	1895.9	[0.11]	12.40*	1573.5	[0.45]
Humulene epoxide II	13.02	1957.6	0.05	12.72	1599.2	0.04
Selin-6-en-4α-ol isomer	14.49*	2098.3	[0.02]	12.89	1612.7	0.01
1-epi-Cubebol	13.50	2002.3	0.03	12.99	1621.0	0.05
Cubebol	13.38	1990.9	0.02	13.16*	1635.1	[0.03]
τ-Muurolol	14.76	2125.2	0.02	13.16*	1635.1	[0.03]
β-Eudesmol	15.07	2156.7	0.01	13.27	1644.0	0.01
Unknown JUVI XVI [m/z 43, 81 (84), 41 (64), 67 (62), 95 (58), 79 (58)... 204 (48), 220 (2)]	15.13	2162.2	0.01	13.32*	1648.4	[0.02]
α-Eudesmol	15.00	2149.3	0.02	13.32*	1648.4	[0.02]
(2 <i>Z</i> ,6 <i>Z</i> )-Farnesol	15.74	2225.1	0.04	13.56	1668.3	0.02
Farnesal isomer				14.07	1711.0	0.01

(2E,6E)-Farnesal	15.50	2200.2	0.03	14.38	1738.4	0.02
Neophytadiene	12.36*	1895.9	[0.11]	15.56	1842.0	0.03
Phytone	14.39	2088.0	0.02	15.60	1845.7	0.02
meta-Camphorene	15.05	2154.2	0.01	16.71	1949.5	0.01
Unknown LICU V [m/z 41, 69 (95), 109 (41), 95 (39), 55 (36), 121 (36)...]				17.27	2002.8	0.02
Unknown LICU VI [m/z 69, 41 (90), 95 (49), 109 (43), 219 (43), 55 (30)...]				17.57	2032.5	0.01
Unknown LICU VII [m/z 69, 41 (94), 81 (42), 109 (39), 107 (33), 43 (31)...]				17.66	2040.7	0.04
Unknown CYFL IX [m/z 93, 69 (95), 135 (76), 107 (53), 41 (53), 109 (50)... 235 (10)...]				17.95	2070.2	0.04
Unknown LICU IV [m/z 69, 41 (73), 55 (46), 95 (40), 109 (39), 91 (39)...]				17.98	2073.5	0.02
Dicital	16.49	2303.4	0.02	18.26	2101.3	0.04
Unknown DRMO VI [m/z 69, 41 (37), 81 (23), 95 (19), 109 (18)...]	18.63	2543.1	0.04	18.31	2105.4	0.03
Benzyl (E)-isoeugenol				18.53	2129.0	0.01
Unknown LICU II [m/z 69, 41 (38), 151 (36), 123 (34), 82 (24), 43 (23), 109 (21)...]				18.56	2131.8	0.06
Phytol isomer I				18.62	2137.9	0.01
Unknown CYFL X [m/z 94, 43 (56), 123 (55), 69 (53), 95 (42), 79 (39)...]				19.45	2224.6	0.01
Unknown CYFL XII [m/z 123, 94 (100), 43 (86), 69 (75), 95 (47), 41 (47), 93 (45)...]				19.72	2253.5	0.03
Total reported		97.97%			98.60%	

\*: Two or more compounds are coeluting on this column

[xx]: Duplicate percentage due to coelutions, only the first one is taken into account in the consolidated total

†: Peaks apexes were resolved, but peaks overlapped and were summed for analysis

tr: The compound has been detected below 0.005% of total signal.

Note: no correction factor was applied

R.T.: Retention time (minutes)

R.I.: Retention index