

GC/MS BATCH NUMBER: C90114

ESSENTIAL OIL: CHAMOMILE ROMAN
BOTANICAL NAME: CHAMAEMELUM NOBILE
ORIGIN: FRANCE

KEY CONSTITUENTS PRESENT IN THIS BATCH OF CHAMOMILE ROMAN OIL	%
ISOBUTYL ANGELATE	32.9
2-METHYLBUTYL ANGELATE	14.7
METHALLYL ANGELATE	9.1
trans-PINOCARVEOL	7.0
ISOAMYL ANGELATE	4.2
PINOCARVONE	4.0
ISOBUTYL ISOBUTYRATE	3.8
2-METHYLBUTYL ISOBUTYRATE	2.5
ISOBUTYL METHACRYLATE	1.7
PROPYL ANGELATE	1.6
α -PINENE	1.3

Comments from Robert Tisserand: Delightful fruity, hay-meadow odor profile. Constituents are in expected amounts for English Chamomile.

Date : May 31, 2018

CERTIFICATE OF ANALYSIS – GC PROFILING

SAMPLE IDENTIFICATION

Internal code : 18E24-PTH1-1-CC

Customer identification : Chamomile Roman - France -C9011479R

Type : Essential oil

Source : *Chamaemelum nobile*

Customer : Plant Therapy

ANALYSIS

Method: PC-PA-014-17J19 - Analysis of the composition of an essential oil, or other volatile liquid, by FAST GC-FID (in French); identifications validated by GC-MS.

Analyst : Benoit Roger, Ph. D.

Analysis date : May 30, 2018

Checked and approved by :

Alexis St-Gelais, M. Sc., chimiste 2013-174

Note: This report may not be published, including online, without the written consent from Laboratoire PhytoChemia.

This report is digitally signed, it is only considered valid if the digital signature is intact.

PHYSICOCHEMICAL DATA

Physical aspect: Faintly yellow liquid

Refractive index: 1.4420 ± 0.0003 (20 °C)

CONCLUSION

No adulterant, contaminant or diluent has been detected using this method.

ANALYSIS SUMMARY

Identification	DB-5 (%)	DB-WAX (%)	Classe
Ethanol	0.09	0.08	Aliphatic alcohol
Isobutyral	0.01	0.02	Aliphatic aldehyde
Methacrolein	0.01	tr	Aliphatic aldehyde
Isobutanol	0.25	0.26	Aliphatic alcohol
Methallyl alcohol	0.03	2.90*	Aliphatic alcohol
Isovaleral	0.02	0.01*	Aliphatic aldehyde
3-Methyl-2-butanone	0.23	0.23	Aliphatic ketone
2-Methylbutyral	0.02	0.02	Aliphatic aldehyde
3-Methyl-3-buten-2-one	0.04	0.04	Aliphatic ketone
3-Methyl-2-butanol?	tr		Aliphatic alcohol
Methyl isobutyrate	0.01	0.01	Aliphatic ester
Valeral	tr	0.01	Aliphatic aldehyde
2-Ethylfuran	tr	tr	Furan
Isoamyl alcohol	0.06	0.07	Aliphatic alcohol
2-Methylbutanol	0.35*	0.41	Aliphatic alcohol
Tiglic aldehyde	[0.35]*	3.89*	Aliphatic aldehyde
(2Z)-Pentenol	0.01		Aliphatic alcohol
Ethyl isobutyrate	0.01	0.01	Aliphatic ester
Toluene	tr	0.01*	Simple phenolic
Isobutyl acetate	0.08	0.05	Aliphatic ester
Methyl isovalerate	0.01	1.34*	Aliphatic ester
Octene	0.01	0.01	Alkene
Hexanal	0.02	0.02	Aliphatic aldehyde
Methyl angelate	0.05	0.05*	Aliphatic ester
3-Methylpentanol	tr	tr	Aliphatic alcohol
Ethyl 2-methylbutyrate	0.06	0.06	Aliphatic ester
7-Methyloctene	0.01	[0.01]*	Alkene
(3Z)-Hexenol	0.28	0.26	Aliphatic alcohol
Propyl isobutyrate	[0.28]	0.31*	Aliphatic ester
(2E)-Hexenol	0.16*	0.14	Aliphatic alcohol
Isobutyl propionate	[0.16]*	0.02	Aliphatic ester
Hexanol	0.09	0.56*	Aliphatic alcohol
Isoamyl acetate	0.05	[0.05]*	Aliphatic ester
2-Methylbutyl acetate	0.12	0.12	Aliphatic ester
Propyl methacrylate	0.04	0.04	Aliphatic ester
Ethyl angelate	0.03	0.04*	Aliphatic ester
Isobutyl isobutyrate	3.77*	[3.89]*	Aliphatic ester
Tricyclene	[3.77]*	tr	Monoterpene
Tiglyl acetate?	0.24*	0.25*	Aliphatic ester
α -Thujene	[0.24]*	[0.01]*	Monoterpene
α -Pinene	1.34	[1.34]*	Monoterpene
Methallyl isobutyrate	0.22	0.91*	Aliphatic ester
Isobutyl methacrylate	1.71	1.71*	Aliphatic ester
Camphene	0.31*	[0.31]*	Monoterpene
α -Fenchene	[0.31]*	0.02	Monoterpene
Propyl 2-methylbutyrate	0.07*	0.06	Aliphatic ester
Thuja-2,4(10)-diene	[0.07]*	0.05	Monoterpene
Propyl isovalerate	0.06	[0.04]*	Aliphatic ester

Benzaldehyde	0.02	0.06	Simple phenolic
Butyl isobutyrate	0.04	0.05	Aliphatic ester
Methallyl methacrylate	0.35	0.36	Aliphatic ester
Sabinene	0.15*	0.04	Monoterpene
β-Pinene	[0.15]*	[3.89]*	Monoterpene
2-Methylbutyl propionate	0.03		Aliphatic ester
Butyl methacrylate	0.07	0.04	Aliphatic ester
Octen-3-ol	0.02	0.02	Aliphatic alcohol
Octan-3-one	0.02*	1.60*	Aliphatic ketone
Dehydro-1,8-cineole	[0.02]*	[0.91]*	Monoterpenic ether
Myrcene	0.02*	[1.71]*	Monoterpene
2-Pentylfuran	[0.02]*	0.01	Furan
Propyl angelate	1.57	[1.60]*	Aliphatic ester
Δ3-Carene	0.69*	tr	Monoterpene
Isobutyl 2-methylbutyrate	[0.69]*	[0.91]*	Aliphatic ester
Isobutyl isovalerate	0.19	0.19	Aliphatic ester
Isoamyl isobutyrate	0.32	[2.90]*	Aliphatic ester
2-Methylbutyl isobutyrate	2.60*	[2.90]*	Aliphatic ester
Methallyl 2-methylbutyrate	[2.60]*	0.06*	Aliphatic ester
para-Cymene	0.08*	0.03	Monoterpene
Methallyl isovalerate?	[0.08]*	1.07*	Aliphatic ester
3-Methyl-3-butenyl isobutyrate?	0.01	[0.06]*	Aliphatic ester
Limonene	0.07	0.11	Monoterpene
1,8-Cineole	0.03	[2.90]*	Monoterpenic ether
Unknown	0.02		Unknown
2-Methylbutyl methacrylate	0.16	[1.07]*	Aliphatic ester
Isoamyl methacrylate	0.88	[1.07]*	Aliphatic ester
Isobutyl angelate	33.64*	33.34*	Aliphatic ester
γ-Terpinene	[33.64]*	[0.25]*	Monoterpene
Prenyl isobutyrate	0.12*	0.11	Aliphatic ester
Tiglyl isobutyrate?	[0.12]*	0.05	Aliphatic ester
Unknown	0.02	0.04	Unknown
Methallyl angelate	9.08	9.19	Aliphatic ester
Butyl angelate	0.87	0.80	Aliphatic ester
Isobutyl tiglate	0.41	[0.56]*	Aliphatic ester
Isoamyl 2-methylbutyrate	0.04	0.02	Aliphatic ester
Linalool	0.02	0.03	Monoterpenic alcohol
2-Methylbutyl 2-methylbutyrate	0.45	[33.34]*	Aliphatic ester
Methallyl tiglate	0.18*	0.13	Aliphatic ester
2-Methylbutyl isovalerate	[0.18]*	0.06	Aliphatic ester
3-Methylpentyl isobutyrate	0.04	0.03	Aliphatic ester
α-Campholenal	0.02	0.02	Monoterpenic aldehyde
trans-Pinocarveol	6.99	6.96	Monoterpenic alcohol
trans-Verbenol	0.13	0.16*	Monoterpenic alcohol
Camphene hydrate	0.32	0.22*	Monoterpenic alcohol
3-Methylpentyl methacrylate	0.15	4.04*	Aliphatic ester
Isoamyl angelate	4.16	[4.04]*	Aliphatic ester
2-Methylbutyl angelate	19.14*	14.69	Aliphatic ester
Pinocarvone	[19.14]*	4.08*	Monoterpenic ketone
Unknown	0.02	0.01	Oxygenated monoterpene
Borneol	0.24	0.28*	Monoterpenic alcohol
Angelyl angelate?	0.39*	0.39	Aliphatic ester

Benzyl acetate	[0.39]*	0.01	Phenolic ester
Isopinocampone	0.21	0.22	Monoterpenic ketone
Terpinen-4-ol	0.01	0.01	Monoterpenic alcohol
Isobutyl 3-hydroxy-2-methylenebutyrate	0.77*	0.79	Aliphatic ester
<i>trans</i> -Isocarveol	[0.77]*	0.04	Monoterpenic alcohol
para-Cymen-8-ol	0.03	0.02	Monoterpenic alcohol
α -Terpineol	0.56*	[0.28]*	Monoterpenic alcohol
Myrtenal	[0.56]*	0.50	Monoterpenic aldehyde
Amyl angelate	[0.56]*	0.08	Aliphatic ester
Myrtenol	0.49	0.45	Monoterpenic alcohol
Tiglyl angelate	0.97*	0.69	Aliphatic ester
2-Methylbutyl tiglate	[0.97]*	0.75*	Aliphatic ester
Verbenone	0.02	0.04	Monoterpenic ketone
3-Methylpentyl 2-methylbutyrate?	0.01	0.04*	Aliphatic ester
3-Methylpentyl isovalerate?	0.01	[0.04]*	Aliphatic ester
<i>trans</i> -Carveol	0.02	0.01	Monoterpenic alcohol
4-Methylhexyl isobutyrate	0.03		Aliphatic ester
Carvone	0.02	0.02	Monoterpenic ketone
2-Hydroxy-2-methylbut-3-enyl angelate	0.84	0.82	Aliphatic ester
3-Methylpentyl angelate	0.20	0.17	Aliphatic ester
Linalyl acetate	0.01	0.02	Monoterpenic ester
(3 <i>Z</i>)-Hexenyl angelate	0.15*	0.09*	Aliphatic ester
Bornyl acetate	[0.15]*	0.34	Monoterpenic ester
Isoamyl 3-hydroxy-2-methylenebutyrate	0.42	0.49	Aliphatic ester
Hexyl angelate	0.07	[4.08]*	Aliphatic ester
<i>trans</i> -Pinocarvyl acetate	0.03	0.04	Monoterpenic ester
3-Methylpentyl tiglate	0.03	[0.09]*	Aliphatic ester
Benzyl isobutyrate	0.01*	0.01	Phenolic ester
(2 <i>E</i> ,4 <i>E</i>)-Decadienal	[0.01]*	0.01	Aliphatic aldehyde
Unknown	0.14*	0.11	Unknown
Silphiperfol-5-ene	[0.14]*	0.03	Sesquiterpene
Cyclosativene I	0.02	[0.75]*	Sesquiterpene
α -Copaene	0.01	0.01	Sesquiterpene
Isobutyl phenylacetate	0.03*	0.02	Phenolic ester
4-Methylpentyl 3-hydroxy-2-methylenebutyrate	[0.03]*	0.01	Aliphatic ester
β -Caryophyllene	0.02	[0.22]*	Sesquiterpene
Myrtenyl propionate?	0.02		Monoterpenic ester
Benzyl angelate	0.02	0.03	Phenolic ester
(<i>E</i>)- β -Farnesene	0.02	[0.16]*	Sesquiterpene
Myrtenyl isobutyrate	0.02	0.06*	Monoterpenic ester
Germacrene D	0.05	[0.28]*	Sesquiterpene
β -Selinene	0.06	0.04	Sesquiterpene
(3 <i>E</i> ,6 <i>E</i>)- α -Farnesene	0.05	[0.06]*	Sesquiterpene
Unknown	0.08*		Oxygenated sesquiterpene
δ -Cadinene	[0.08]*	0.04	Sesquiterpene
Copaborneol	0.03	0.03	Sesquiterpenic alcohol
Neophytadiene	0.01		Diterpene
Phytone	0.01	0.01	Terpenic ketone

Total identified	99.05%	98.15%	
-------------------------	---------------	---------------	--

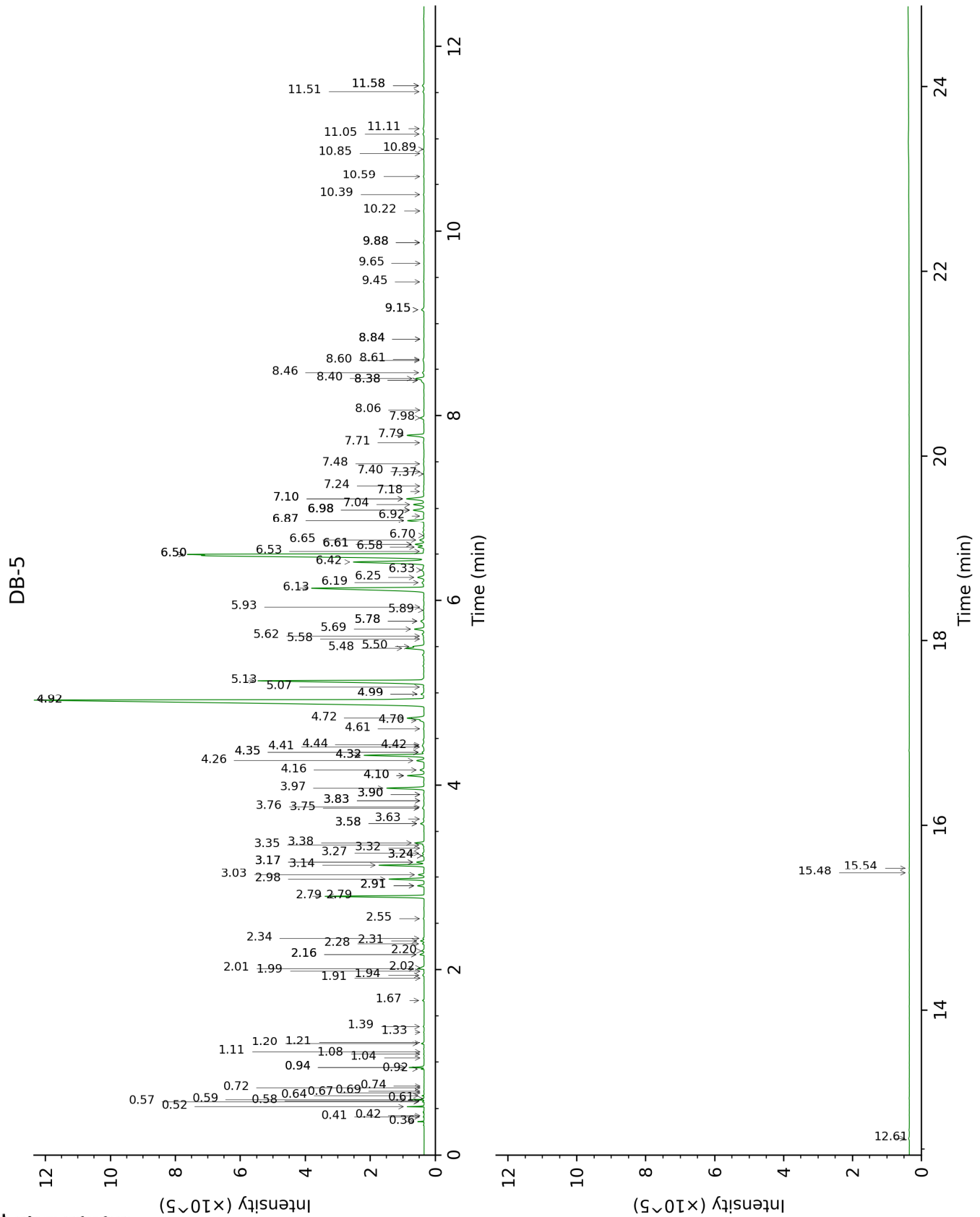
*: Two or more compounds are coeluting on this column

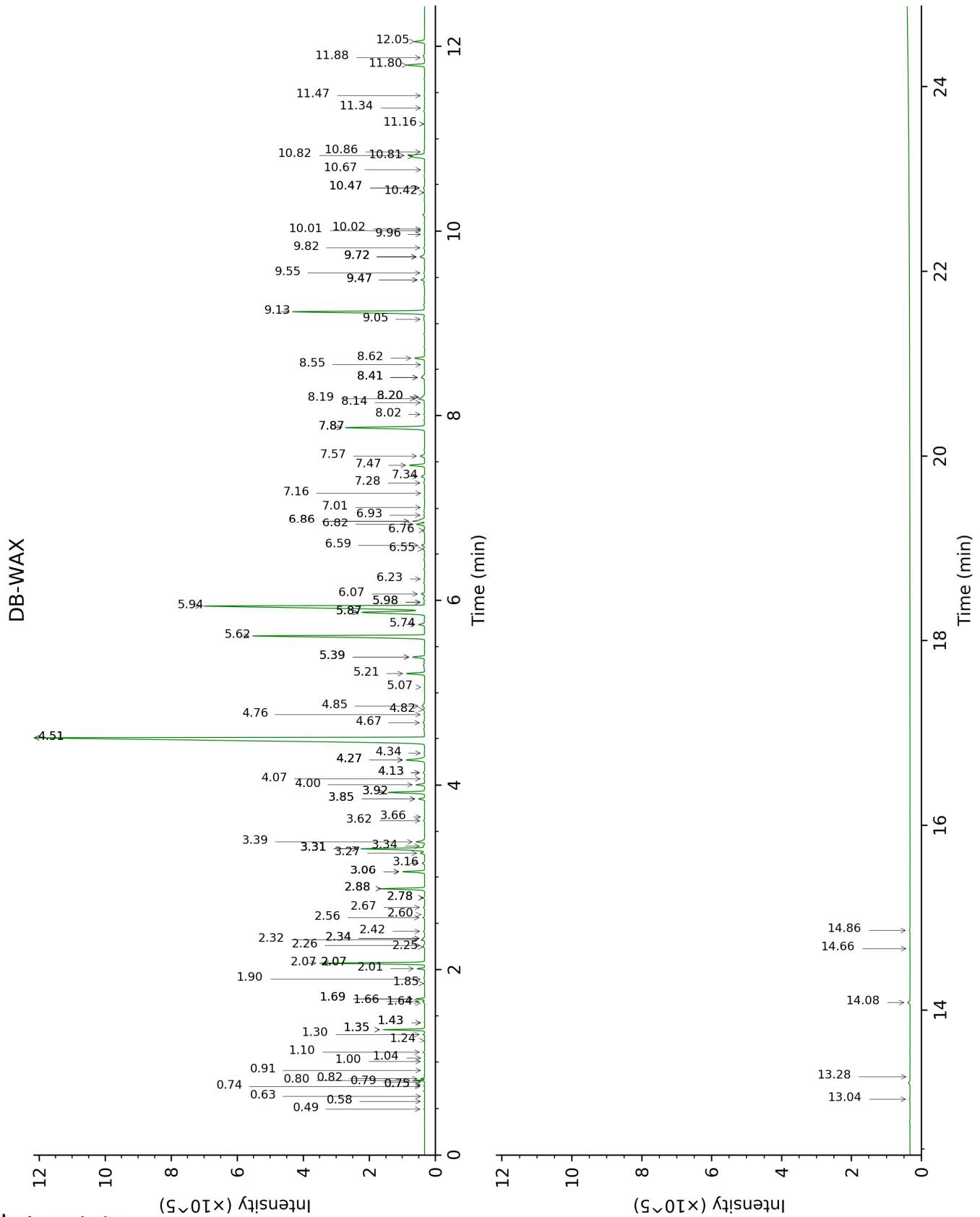
[xx]: Duplicate percentage due to coelutions, not taken account in the identified total

tr: The compound has been detected below 0.005% of total signal.

Note: no correction factor was applied

This page was intentionally left blank. The following pages present the complete data of the analysis.





FULL ANALYSIS DATA

Identification	Column DB-5			Column DB-WAX		
	R.T	R.I	%	R.T	R.I	%
Ethanol	0.36	499	0.09	0.82	908	0.08
Isobutyral	0.41	540	0.01	0.49	777	0.02
Methacrolein	0.42	553	0.01	0.63	843	tr
Isobutanol	0.52	619	0.25	2.01	1063	0.26
Methallyl alcohol	0.57	637	0.03	3.31*	1173	2.90
Isovaleral	0.58	640	0.02	0.75*	887	0.01
3-Methyl-2-butanone	0.60	645	0.23	0.80	904	0.23
2-Methylbutyral	0.61	650	0.02	0.74	881	0.02
3-Methyl-3-buten-2-one	0.64	660	0.04	1.10	954	0.04
3-Methyl-2-butanol?	0.67	671	tr			
Methyl isobutyrate	0.69	677	0.01	0.78	899	0.01
Valeral	0.72	690	tr	1.04	944	0.01
2-Ethylfuran	0.74	696	tr	0.91	922	tr
Isoamyl alcohol	0.92	728	0.06	3.34	1175	0.07
2-Methylbutanol	0.94*	730	0.35	3.39	1178	0.41
Tiglic aldehyde	0.94*	730	[0.35]	2.07*	1069	3.89
(2Z)-Pentenol	1.04	745	0.01			
Ethyl isobutyrate	1.08	751	0.01	1.00	937	0.01
Toluene	1.11	755	tr	1.43*	1006	0.01
Isobutyl acetate	1.20	768	0.08	1.30	986	0.05
Methyl isovalerate	1.21	770	0.01	1.35*	994	1.34
Octene	1.33	788	0.01	0.58	823	0.01
Hexanal	1.39	797	0.02	1.85	1047	0.02
Methyl angelate	1.67	824	0.05	2.34*	1095	0.05
3-Methylpentanol	1.91	844	tr	5.06	1301	tr
Ethyl 2-methylbutyrate	1.94	847	0.06	1.66	1028	0.06
7-Methyloctene	1.98	851	0.01	0.75*	887	[0.01]
(3Z)-Hexenol	2.01†	853	0.28	5.74	1350	0.26
Propyl isobutyrate	2.02†	854	[0.28]	1.69*	1031	0.31
(2E)-Hexenol	2.16*	866	0.16	6.07	1374	0.14
Isobutyl propionate	2.16*	866	[0.16]	1.90	1052	0.02
Hexanol	2.20	870	0.09	5.39*	1324	0.56
Isoamyl acetate	2.28	876	0.05	2.34*	1095	[0.05]
2-Methylbutyl acetate	2.31	879	0.12	2.32	1094	0.12
Propyl methacrylate	2.34	881	0.04	2.42	1103	0.04
Ethyl angelate	2.55	900	0.03	2.78*	1131	0.04
Isobutyl isobutyrate	2.79*	917	3.77	2.07*	1069	[3.89]
Tricyclene	2.79*	917	[3.77]	1.24	975	tr
Tiglyl acetate?	2.91*	924	0.24	3.85*	1214	0.25
α-Thujene	2.91*	924	[0.24]	1.43*	1006	[0.01]

α-Pinene	2.98	929	1.34	1.35*	994	[1.34]
Methallyl isobutyrate	3.03	932	0.22	3.06*	1153	0.91
Isobutyl methacrylate	3.14	940	1.71	2.88*	1139	1.71
Camphene	3.17*	942	0.31	1.69*	1031	[0.31]
α-Fenchene	3.17*	942	[0.31]	1.64	1026	0.02
Propyl 2-methylbutyrate	3.24*	947	0.07	2.56	1114	0.06
Thuja-2,4(10)-diene	3.24*	947	[0.07]	2.25	1086	0.05
Propyl isovalerate	3.26	948	0.06	2.78*	1131	[0.04]
Benzaldehyde	3.32	952	0.02	7.28	1462	0.06
Butyl isobutyrate	3.35	954	0.04	2.67	1123	0.05
Methallyl methacrylate	3.38	956	0.35	4.00	1225	0.36
Sabinene	3.58*	970	0.15	2.26	1088	0.04
β-Pinene	3.58*	970	[0.15]	2.07*	1069	[3.89]
2-Methylbutyl propionate	3.63	973	0.03			
Butyl methacrylate	3.75	981	0.07	3.62	1196	0.04
Octen-3-ol	3.76	982	0.02	6.76	1424	0.02
Octan-3-one	3.83*	987	0.02	3.92*	1219	1.60
Dehydro-1,8-cineole	3.83*	987	[0.02]	3.06*	1153	[0.91]
Myrcene	3.90*	991	0.02	2.88*	1139	[1.71]
2-Pentylfuran	3.90*	991	[0.02]	3.66	1199	0.01
Propyl angelate	3.97	996	1.57	3.92*	1219	[1.60]
Δ ³ -Carene	4.10*	1005	0.69	2.60	1117	tr
Isobutyl 2-methylbutyrate	4.10*	1005	[0.69]	3.06*	1153	[0.91]
Isobutyl isovalerate	4.16	1009	0.19	3.27	1169	0.19
Isoamyl isobutyrate	4.26	1015	0.32	3.31*	1173	[2.90]
2-Methylbutyl isobutyrate	4.32*	1019	2.60	3.31*	1173	[2.90]
Methallyl 2-methylbutyrate	4.32*	1019	[2.60]	4.13*	1234	0.06
para-Cymene	4.35*	1021	0.08	4.07	1229	0.03
Methallyl isovalerate?	4.35*	1021	[0.08]	4.27*	1244	1.07
3-Methyl-3-butenyl isobutyrate?	4.41	1024	0.01	4.13*	1234	[0.06]
Limonene	4.42	1025	0.07	3.16	1161	0.11
1,8-Cineole	4.44	1026	0.03	3.31*	1173	[2.90]
Unknown [m/z 43, 41 (84), 71 (62), 69 (59), 68 (51), 67 (48), 93 (41)...156 (4)]	4.61	1037	0.02			

2-Methylbutyl methacrylate	4.70	1043	0.16	4.27*	1244	[1.07]
Isoamyl methacrylate	4.72	1044	0.88	4.27*	1244	[1.07]
Isobutyl angelate	4.92*	1056	33.64	4.51*	1261	33.34
γ-Terpinene	4.92*	1056	[33.64]	3.85*	1214	[0.25]
Prenyl isobutyrate	4.99*	1061	0.12	4.85	1286	0.11
Tiglyl isobutyrate?	4.99*	1061	[0.12]	4.82	1283	0.05
Unknown [m/z 71, 43 (28), 41 (21), 57 (19), 98 (11)... 116 (4), 129 (1), 156 (t)]	5.07	1066	0.02	6.93	1436	0.04
Methallyl angelate	5.13	1070	9.08	5.62	1341	9.19
Butyl angelate	5.48	1092	0.87	5.21	1312	0.80
Isobutyl tiglate	5.50	1094	0.41	5.39*	1324	[0.56]
Isoamyl 2-methylbutyrate	5.58	1099	0.04	4.34	1249	0.02
Linalool	5.62	1101	0.02	8.02	1518	0.03
2-Methylbutyl 2-methylbutyrate	5.69	1106	0.45	4.51*	1261	[33.34]
Methallyl tiglate	5.78*	1111	0.18	6.60	1412	0.13
2-Methylbutyl isovalerate	5.78*	1111	[0.18]	4.67	1273	0.06
3-Methylpentyl isobutyrate	5.90	1119	0.04	4.76	1279	0.03
α-Campholenal	5.93	1121	0.02	7.01	1443	0.02
trans-Pinocarveol	6.13	1134	6.99	9.13	1605	6.96
trans-Verbenol	6.19	1138	0.13	9.47*	1633	0.16
Camphene hydrate	6.25	1141	0.32	8.41*	1549	0.22
3-Methylpentyl methacrylate	6.33	1146	0.15	5.87*	1359	4.04
Isoamyl angelate	6.42	1152	4.16	5.87*	1359	[4.04]
2-Methylbutyl angelate	6.50*	1157	19.14	5.94	1364	14.69
Pinocarpone	6.50*	1157	[19.14]	7.87*	1507	4.08
Unknown [m/z 96, 95 (72), 67 (45), 41 (42), 55 (32), 70 (27)... 152 (t)]	6.53	1159	0.02	10.02	1678	0.01
Borneol	6.58	1162	0.24	9.72*	1653	0.28
Angelyl angelate?	6.61*	1164	0.39	6.82	1428	0.39
Benzyl acetate	6.61*	1164	[0.39]	10.01	1676	0.01
Isopinocampone	6.65	1167	0.21	7.57	1484	0.22
Terpinen-4-ol	6.70	1170	0.01	8.55	1560	0.01
Isobutyl 3-hydroxy-2-methylenebutyrate	6.87*	1181	0.77	10.82	1745	0.79
trans-Isocarveol	6.87*	1181	[0.77]	10.86	1748	0.04
para-Cymen-8-ol	6.92	1184	0.03	11.47	1800	0.02
α-Terpineol	6.98*	1189	0.56	9.72*	1653	[0.28]
Myrtenal	6.98*	1189	[0.56]	8.62	1565	0.50
Amyl angelate	6.98*	1189	[0.56]	6.55	1408	0.08

Myrtenol	7.04	1192	0.49	10.81	1744	0.45
Tiglyl angelate	7.10*	1196	0.97	7.47	1476	0.69
2-Methylbutyl tiglate	7.10*	1196	[0.97]	6.86*	1431	0.75
Verbenone	7.18	1202	0.02	9.55	1639	0.04
3-Methylpentyl 2-methylbutyrate?	7.24	1205	0.01	5.98*	1367	0.04
3-Methylpentyl isovalerate?	7.37	1214	0.01	5.98*	1367	[0.04]
<i>trans</i> -Carveol	7.40	1216	0.02	11.34	1788	0.01
4-Methylhexyl isobutyrate	7.48	1221	0.03			
Carvone	7.71	1237	0.02	9.96	1673	0.02
2-Hydroxy-2-methylbut-3-enyl angelate	7.79	1242	0.84	11.80	1829	0.82
3-Methylpentyl angelate	7.98	1255	0.20	7.34	1468	0.17
Linalyl acetate	8.06	1260	0.01	8.14	1528	0.02
(3Z)-Hexenyl angelate	8.38*	1282	0.15	8.20*	1533	0.09
Bornyl acetate	8.38*	1282	[0.15]	8.18	1531	0.34
Isoamyl 3-hydroxy-2-methylenebutyrate	8.40	1283	0.42	12.05	1852	0.49
Hexyl angelate	8.46	1288	0.07	7.87*	1507	[4.08]
<i>trans</i> -Pinocarvyl acetate	8.60	1296	0.03	9.05	1598	0.04
3-Methylpentyl tiglate	8.61	1297	0.03	8.20*	1533	[0.09]
Benzyl isobutyrate	8.84*	1313	0.01	10.67	1732	0.01
(2E,4E)-Decadienal	8.84*	1313	[0.01]	11.16	1774	0.01
Unknown [m/z 83, 55 (79), 82 (26), 43 (25), 45 (18), 69 (15)...166 (8)]	9.15*	1335	0.14	14.08	2040	0.11
Silphiperfol-5-ene	9.15*	1335	[0.14]	6.23	1385	0.03
Cyclosativene I	9.45	1357	0.02	6.86*	1431	[0.75]
α -Copaene	9.65	1371	0.01	7.16	1454	0.01
Isobutyl phenylacetate	9.88*	1387	0.03	11.88	1836	0.02
4-Methylpentyl 3-hydroxy-2-methylenebutyrate	9.88*	1387	[0.03]	13.28	1963	0.01
β -Caryophyllene	10.22	1411	0.02	8.41*	1549	[0.22]
Myrtenyl propionate?	10.40	1424	0.02			
Benzyl angelate	10.59	1439	0.02	13.04	1941	0.03
(E)- β -Farnesene	10.85	1458	0.02	9.47*	1633	[0.16]
Myrtenyl isobutyrate	10.89	1462	0.02	10.47*	1714	0.06
Germacrene D	11.06	1474	0.05	9.72*	1653	[0.28]

β-Selinene	11.11	1478	0.06	9.82	1661	0.04
(3E,6E)-α-Farnesene	11.51	1508	0.05	10.47*	1714	[0.06]
Unknown [m/z 95, 124 (75), 109 (75), 43 (73), 137 (67), 81 (67), 149 (48)...222 (25)]	11.58*	1513	0.08			
δ-Cadinene	11.58*	1513	[0.08]	10.42	1710	0.04
Copaborneol	12.61	1595	0.03	14.86	2115	0.03
Neophytadiene	15.48	1840	0.01			
Phytone	15.54	1845	0.01	14.66	2096	0.01
Total identified		99.05%			98.15%	
Total reported		99.11%			98.30%	

*: Two or more compounds are coeluting on this column

[xx]: Duplicate percentage due to coelutions, not taken account in the identified total

†: Peaks apexes were resolved, but peaks overlapped and were summed for analysis

tr: The compound has been detected below 0.005% of total signal.

Note: no correction factor was applied
R.T.: Retention time (minutes)
R.I.: Retention index