

**Date :** December 19, 2019

**CERTIFICATE OF ANALYSIS – GC PROFILING**

**SAMPLE IDENTIFICATION**

**Internal code :** 19L18-PTH10

**Customer identification :** Bergamot (Bergapten Free) - Italy - B3010893R

**Type :** Essential oil

**Source :** *Citrus bergamia*

**Customer :** Plant Therapy

**ANALYSIS**

**Method:** PC-MAT-007 - Analysis of the composition of an essential oil or other volatile liquide by FAST GC-FID (in French); identifications validated by GC-MS.

**Analyst :** Sylvain Mercier, M. Sc., Chimiste

**Analysis date :** December 18, 2019

Checked and approved by :

---

Alexis St-Gelais, M. Sc., chimiste 2013-174

*Notes: This report may not be published, including online, without the written consent from Laboratoire PhytoChemia. This report is digitally signed, it is only considered valid if the digital signature is intact. The results only describe the samples that were submitted to the assays.*

*PHYSICOCHEMICAL DATA*

**Physical aspect:** Clear liquid

**Refractive index:** 1.4630 ± 0.0003 (20 °C)

*NFT 75-215:2009 - OIL OF BERGAMOT - ITALY*

<b>Compound</b>	<b>Min. %</b>	<b>Max. %</b>	<b>Observed %</b>	<b>Complies?</b>
β-Bisabolene	0.3	0.6	0.1	No
Geranial	0.25	0.50	0.27	Yes
Linalyl acetate	22	36	30	Yes
Linalool	3	15	14	Yes
γ-Terpinene	6	10	6	Yes
Limonene	30	45	37	Yes
β-Pinene	5.5	9.5	6.6	Yes
<b>Refractive index</b>	1.4650	1.4700	1.4630	No

*CONCLUSION*

No adulterant, contaminant or diluent has been detected using this method. The oil marginally does not comply with the AFNOR standard for Italian bergamot oil, which is expected for bergapten free oils.

## ANALYSIS SUMMARY – CONSOLIDATED CONTENTS

New readers of similar reports are encouraged to read table footnotes at least once.

Identification	%	Classe
$\alpha$ -Thujene	0.14	Monoterpene
$\alpha$ -Pinene	1.03	Monoterpene
Camphene	0.03	Monoterpene
$\beta$ -Pinene	6.58	Monoterpene
Sabinene	1.02	Monoterpene
6-Methyl-5-hepten-2-one	0.01	Aliphatic ketone
Myrcene	0.81	Monoterpene
$\alpha$ -Phellandrene	0.02	Monoterpene
Pseudolimonene	0.01	Monoterpene
Octanal	0.04	Aliphatic aldehyde
$\Delta^3$ -Carene	0.02	Monoterpene
$\alpha$ -Terpinene	0.06	Monoterpene
para-Cymene	0.58	Monoterpene
Limonene	36.69	Monoterpene
1,8-Cineole	0.17	Monoterpenic ether
(Z)- $\beta$ -Ocimene	0.03	Monoterpene
(E)- $\beta$ -Ocimene	0.07	Monoterpene
$\gamma$ -Terpinene	5.71	Monoterpene
cis-Sabinene hydrate	0.02	Monoterpenic alcohol
cis-Linalool oxide (fur.)	0.02	Monoterpenic alcohol
Octanol	0.01	Aliphatic alcohol
Terpinolene	0.13	Monoterpene
trans-Linalool oxide (fur.)	0.03	Monoterpenic alcohol
trans-Sabinene hydrate	0.01	Monoterpenic alcohol
Linalool	14.34	Monoterpenic alcohol
Nonanal	0.03	Aliphatic aldehyde
trans-para-Mentha-2,8-dien-1-ol	tr	Monoterpenic alcohol
cis-Limonene oxide	0.02	Monoterpenic ether
trans-Limonene oxide	0.01	Monoterpenic ether
Camphor	0.02	Monoterpenic ketone
Epoxyterpinolene	0.01	Monoterpenic ether
Citronellal	0.03	Monoterpenic aldehyde
Terpinen-4-ol	0.02	Monoterpenic alcohol
$\alpha$ -Terpineol	0.06	Monoterpenic alcohol
$\gamma$ -Terpineol	0.01	Monoterpenic alcohol
Unknown	tr	Unknown
Decanal	0.01	Aliphatic aldehyde
Octyl acetate	0.10	Aliphatic ester
Nerol	0.01	Monoterpenic alcohol
Citronellol	0.01	Monoterpenic alcohol
Neral	0.22	Monoterpenic aldehyde
(cis?)-Linalool oxide acetate (fur.)?	0.06	Monoterpenic ester
Geraniol	0.04	Monoterpenic alcohol
Linalyl acetate	30.16	Monoterpenic ester
Geranial	0.27	Monoterpenic aldehyde
(trans?)-Linalool oxide acetate (fur.)?	0.14	Monoterpenic ester
Unknown	0.02	Unknown

Linalyl propionate	0.01	Monoterpenic ester
Hodiendiol derivative	0.01	Oxygenated monoterpene
$\alpha$ -Terpinyl acetate	0.01	Monoterpenic ester
Unknown	0.01	Monoterpenic ester
Unknown	0.02	Oxygenated monoterpene
Neryl acetate	0.43	Monoterpenic ester
Geranyl acetate	0.41	Monoterpenic ester
Dodecanal	0.01	Aliphatic aldehyde
$\beta$ -Caryophyllene	0.13	Sesquiterpene
<i>trans</i> - $\alpha$ -Bergamotene	0.06	Sesquiterpene
$\alpha$ -Humulene	0.01	Sesquiterpene
( <i>E</i> )- $\beta$ -Farnesene	0.01	Sesquiterpene
$\beta$ -Bisabolene	0.05	Sesquiterpene
Caryophyllene oxide	0.01	Sesquiterpenic ether
<b>Consolidated total</b>	<b>100.02%</b>	

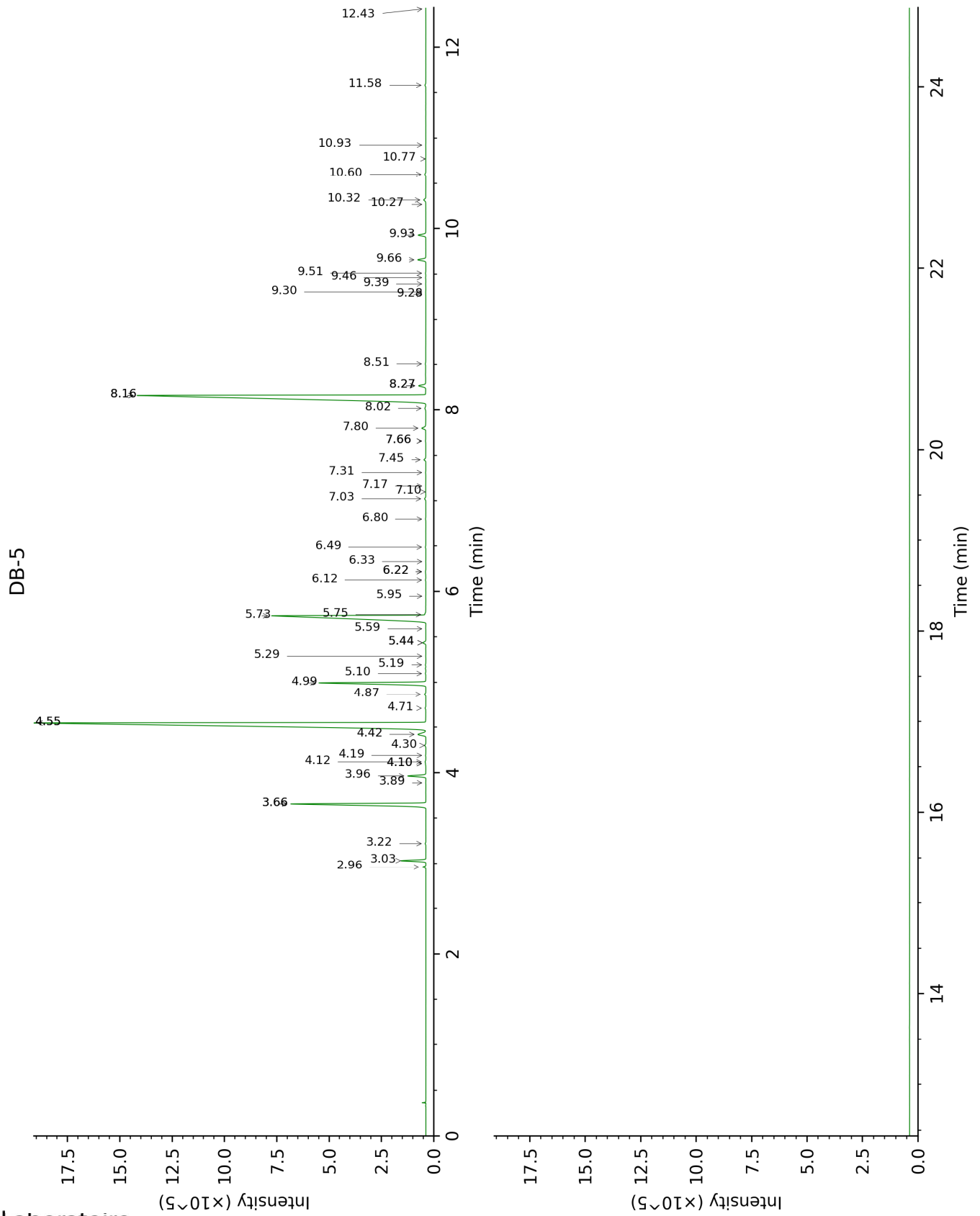
tr: The compound has been detected below 0.005% of total signal.

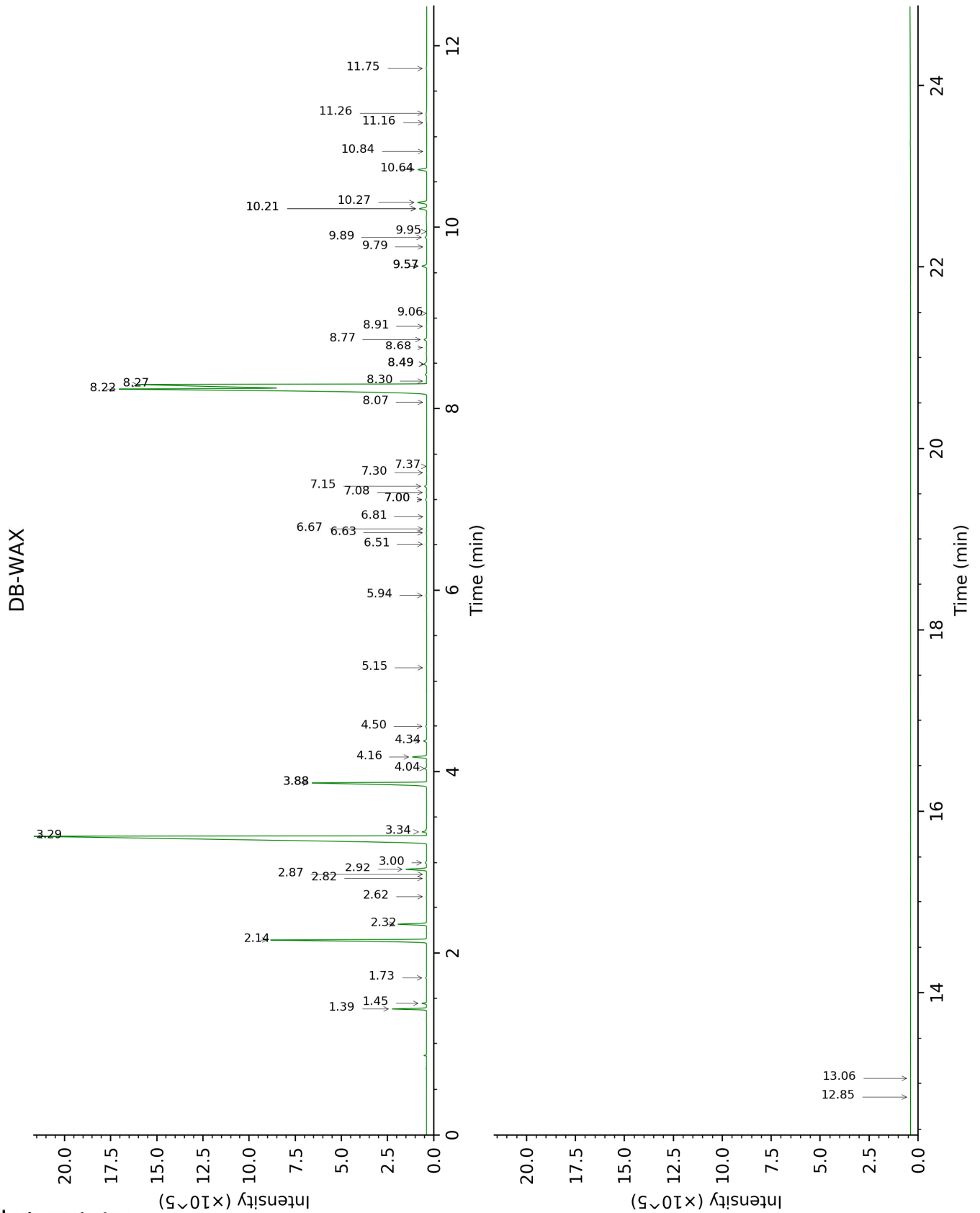
Note: no correction factor was applied

**About "consolidated" data:** The table above presents the breakdown of the sample volatile constituents after applying an algorithm to collapse data acquired from the multi-columns system of PhytoChemia into a single set of consolidated contents. In case of discrepancies between columns, the algorithm is set to prioritize data from the most standard DB-5 column, and smallest values so as to avoid overestimating individual content. This process is semi-automatic. Advanced users are invited to consult the "Full analysis data" table after the chromatograms in this report to access the full untreated data and perform their own calculations if needed.

**Unknowns:** Unknown compounds' mass spectral data is presented in the "Full analysis data" table. The occurrence of unknown compounds is to be expected in many samples, and does not denote particular problems unless noted otherwise in the conclusion.

This page was intentionally left blank. The following pages present the complete data of the analysis.





FULL ANALYSIS DATA

Identification	Column DB-5			Column DB-WAX		
	R.T	R.I	%	R.T	R.I	%
α-Thujene	2.96	924	0.14	1.45	997	0.13
α-Pinene	3.03	929	1.03	1.39	990	1.03
Camphene	3.22	941	0.03	1.73	1025	0.03
β-Pinene	3.66*	970	7.56	2.14	1066	6.58
Sabinene	3.66*	970	[7.56]	2.32	1084	1.02
6-Methyl-5-hepten-2-one	3.89	986	0.01	5.15	1297	0.01
Myrcene	3.96	991	0.81	2.92	1133	0.82
α-Phellandrene	4.10*	1000	0.02	2.82	1125	0.02
Pseudolimonene	4.10*	1000	[0.02]	2.87	1128	0.01
Octanal	4.12	1001	0.04	4.50	1251	0.04
Δ <sup>3</sup> -Carene	4.19	1006	0.02	2.62	1109	0.01
α-Terpinene	4.30	1012	0.06	3.00	1139	0.06
para-Cymene	4.42	1020	0.58	4.16	1227	0.59
Limonene	4.55*	1028	36.69	3.29	1162	36.69
1,8-Cineole	4.55*	1028	[36.69]	3.34	1165	0.17
(Z)-β-Ocimene	4.71	1038	0.03	3.88*	1206	5.75
(E)-β-Ocimene	4.87	1048	0.07	4.04	1218	0.08
γ-Terpinene	4.99	1057	5.71	3.88*	1206	[5.75]
cis-Sabinene hydrate	5.10	1063	0.02	7.00*	1432	0.06
cis-Linalool oxide (fur.)	5.19	1069	0.02	6.63	1404	0.02
Octanol	5.29	1076	0.01	8.30	1529	0.03
Terpinolene	5.44*	1085	0.16	4.34	1240	0.13
trans-Linalool oxide (fur.)	5.44*	1085	[0.16]	7.00*	1432	[0.06]
trans-Sabinene hydrate	5.59	1095	0.01	8.07	1511	0.01
Linalool	5.73†	1104	14.37	8.22†	1522	43.99
Nonanal	5.74†	1105	[14.37]	5.94	1354	0.03
trans-para-Mentha-2,8-dien-1-ol	5.95	1118	tr	9.06	1587	tr
cis-Limonene oxide	6.12	1130	0.02	6.51	1395	0.02
trans-Limonene oxide	6.22*	1136	0.03	6.67	1407	0.01
Camphor	6.22*	1136	[0.03]	7.30	1453	0.02
Epoxyterpinolene	6.33	1143	0.01	6.81	1418	0.01
Citronellal	6.49	1154	0.03	7.08	1437	0.03
Terpinen-4-ol	6.80	1175	0.02	8.68	1558	0.04
α-Terpineol	7.02	1190	0.06	9.89	1654	0.07
γ-Terpineol	7.10	1195	0.01	9.95	1659	tr
Unknown [m/z 43, 71 (80), 67 (55), 59 (51), 68 (44), 41 (43)...]	7.17	1199	tr			



Decanal	7.31	1209	0.01	7.37	1458	0.01
Octyl acetate	7.45	1219	0.10	7.15	1442	0.10
Nerol	7.66*	1234	0.02	11.16	1759	0.01
Citronellol	7.66*	1234	[0.02]	10.84	1733	0.01
Neral	7.80	1240	0.22	9.57*	1629	0.23
( <i>cis</i> ?) - Linalool oxide acetate (fur.)?	8.02	1254	0.06			
Geraniol	8.16*	1263	30.20	11.75	1810	0.04
Linalyl acetate	8.16*	1263	[30.20]	8.27†	1526	[43.99]
Geranial	8.27*	1270	0.41	10.20*	1680	0.34
( <i>trans</i> ?) - Linalool oxide acetate (fur.)?	8.27*	1270	[0.41]	8.77	1565	0.14
Unknown [m/z 43, 121 (74), 93 (42), 95 (38), 107 (29), 41 (29), 136 (28)...]	8.51	1286	0.02			
Linalyl propionate	9.28	1339	0.01	8.91	1576	0.02
Hodiendiol derivative	9.30	1341	0.01	13.06	1926	0.01
$\alpha$ -Terpinyl acetate	9.39	1347	0.01	9.78	1646	0.01
Unknown [m/z 43, 121 (52), 93 (48), 79 (33), 41 (30), 136 (26), 81 (25)...]	9.46	1352	0.01			
Unknown [m/z 43, 79 (46), 71 (30), 94 (25), 41 (23), 81 (21)... 197 (0)]	9.51	1356	0.02	11.26	1768	0.04
Neryl acetate	9.66	1366	0.43	10.27	1685	0.43
Geranyl acetate	9.93	1385	0.41	10.64	1716	0.41
Dodecanal	10.27	1409	0.01			
$\beta$ -Caryophyllene	10.32	1412	0.13	8.49*	1544	0.17
<i>trans</i> - $\alpha$ -Bergamotene	10.60	1434	0.06	8.49*	1544	[0.17]
$\alpha$ -Humulene	10.77	1446	0.01			
( <i>E</i> )- $\beta$ -Farnesene	10.93	1458	0.01	9.57*	1629	[0.23]
$\beta$ -Bisabolene	11.58	1506	0.05	10.20*	1680	[0.34]
Caryophyllene oxide	12.43	1572	0.01	12.85	1907	0.01
<b>Total identified</b>		<b>99.76%</b>			<b>99.43%</b>	
<b>Total reported</b>		<b>99.82%</b>			<b>99.47%</b>	

\*: Two or more compounds are coeluting on this column

[xx]: Duplicate percentage due to coelutions, not taken into account in the consolidated total

†: Peaks apexes were resolved, but peaks overlapped and were summed for analysis

tr: The compound has been detected below 0.005% of total signal.

Note: no correction factor was applied  
R.T.: Retention time (minutes)  
R.I.: Retention index